



NuMetal[®]

High Pressure Laminates with
a Real Metal Surface

Commercial
Architectural Millwork
Healthcare + Institutional
Hospitality
Retail



Design Beyond the Surface

ATI Decorative Laminates is a leading manufacturer of decorative surfacing solutions. Headquartered in Greensboro, NC since 1979, ATI provides solutions for the hospitality, healthcare and institutional, retail, commercial, and residential markets. Through our commitment to continuous improvement and our strong company values, our goal is to provide superior decorative products, quality customer service, and foster long-lasting relationships.

ATI products can be specified under the following CSI divisions:

- 07 42 00 – Fusion Unbacked Aluminum Sheets
- 09 78 00 – NuMetal High Pressure Laminates and Fusion Unbacked Aluminum Sheets
- 12 36 00 – NuMetal High Pressure Laminates

ATI Decorative Laminates

6106 West Market Street | Greensboro, NC 27409
800.849.1320 | 336.668.0488 | Fax: 336.668.0713 | ATILaminates.com

ISO 9001:2015 Certified | ISO 14001:2015 Certified | HUB (Historically Underutilized Business) Certified



THE FORMULA
Polished Aluminum



Discover NuMetal	2
Solving Your Design Needs	4
Embossed Aluminum	6
Aluminum	8
Copper	9
FineLine	10
MagneticMetal	11
Artful Metals	12
Sustainability	14
FAQs	16
Quick Reference Guide	18
How to Order	19

Discover NuMetal

Versatile Metal Surfaces for Stunning Design Applications

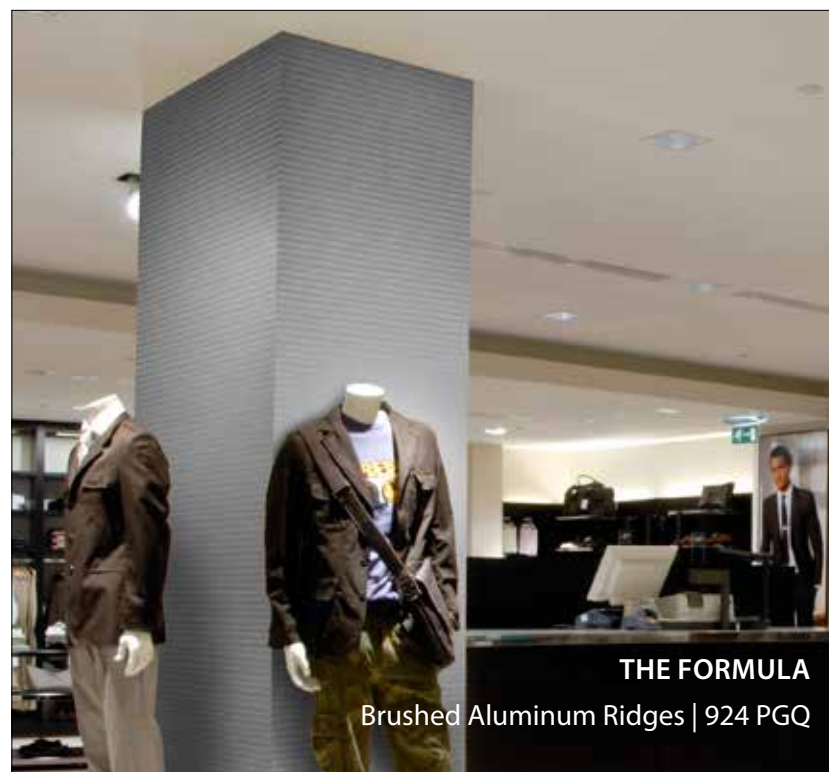
NuMetal offers both High-Pressure Laminate metals (HPLs) and unbacked metals, providing flexible solutions to suit your design needs. Available in Aluminum and Copper finishes, NuMetal uses techniques like embossing and deep texturing to create visually striking and sophisticated surfaces.

Perfect for vertical and light-duty horizontal applications, NuMetal is ideal for wall panels, backsplashes, countertops, accent walls, store fixtures, and point-of-purchase (POP) displays. Its aesthetic appeal and innovative designs are perfect for both commercial and residential spaces, including hospitality, healthcare, retail, and institutional environments.

Look for The Formula

THE FORMULA

Brushed Aluminum	Ridges	924 PGQ
Design	Finish	Product Code



THE FORMULA
Brushed Aluminum Ridges | 924 PGQ



THE FORMULA
Heat Stressed Copper Plates + Mill Satin Aluminum

Solving Your Design Needs

Why Choose NuMetal?

NuMetal decorative metal panels are an exceptional choice for enhancing interior walls with striking color, texture, and luster. They bring a distinctive visual appeal that stands out far beyond the possibilities of paint or other wall coverings.

HPLs feature real aluminum or copper surfaces bonded to a phenolic paper backing. To enhance durability and wear resistance, our brushed and textured HPL finishes are lacquer-coated, while polished finishes are anodized to prevent tarnishing. With eco-friendly options crafted from pre-consumer, phenol-free, and CO2-neutral materials, NuMetal HPLs are as sustainable as they are stylish. The recyclable core, made from 100% renewable biological components, underscores ATI's dedication to environmentally responsible design.

Variety and Real Metal Surfaces

With so many stunning options to choose from, NuMetal is a versatile choice for your space. Perfect for wall panels, backsplashes, countertops, accent walls, POP displays, store fixtures, and more, we're here to help you find the ideal fit for your project. Most finishes are protected with a lacquer coating that enhances scratch resistance while maintaining their brilliance and resisting tarnishing.

- Embossed Aluminum Collection
- Aluminum Collection
- Copper Collection
- FineLine Collection
- MagneticMetal Collection
- Artful Metals Collection



Real Metal Surfaces



Magnetic Surfaces Available



Suitable for a Variety of Applications



Unbacked + Phenolic Backed Designs



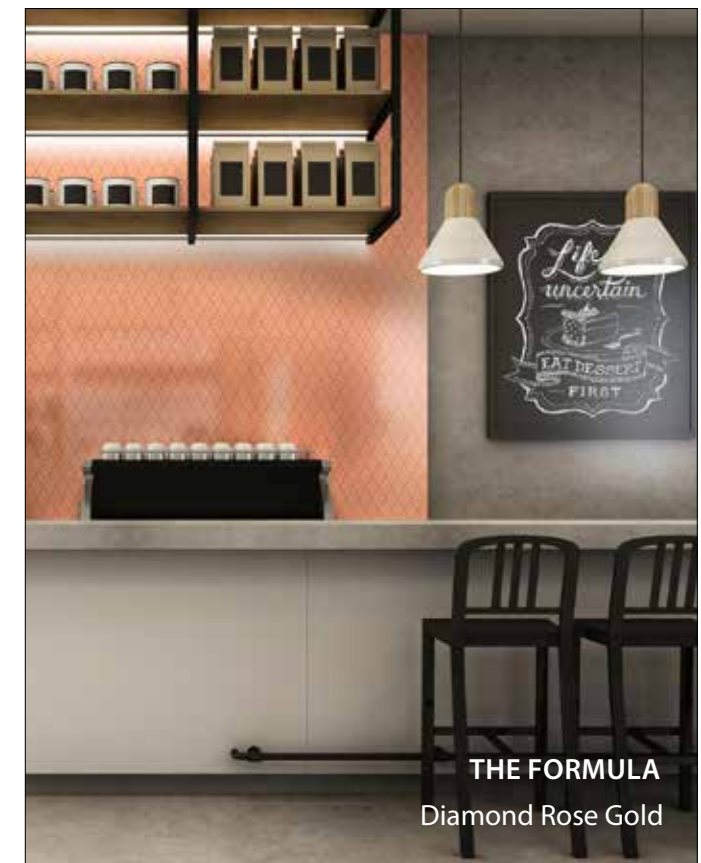
Variety of Options Stocked In-House



THE FORMULA
Polished Brass



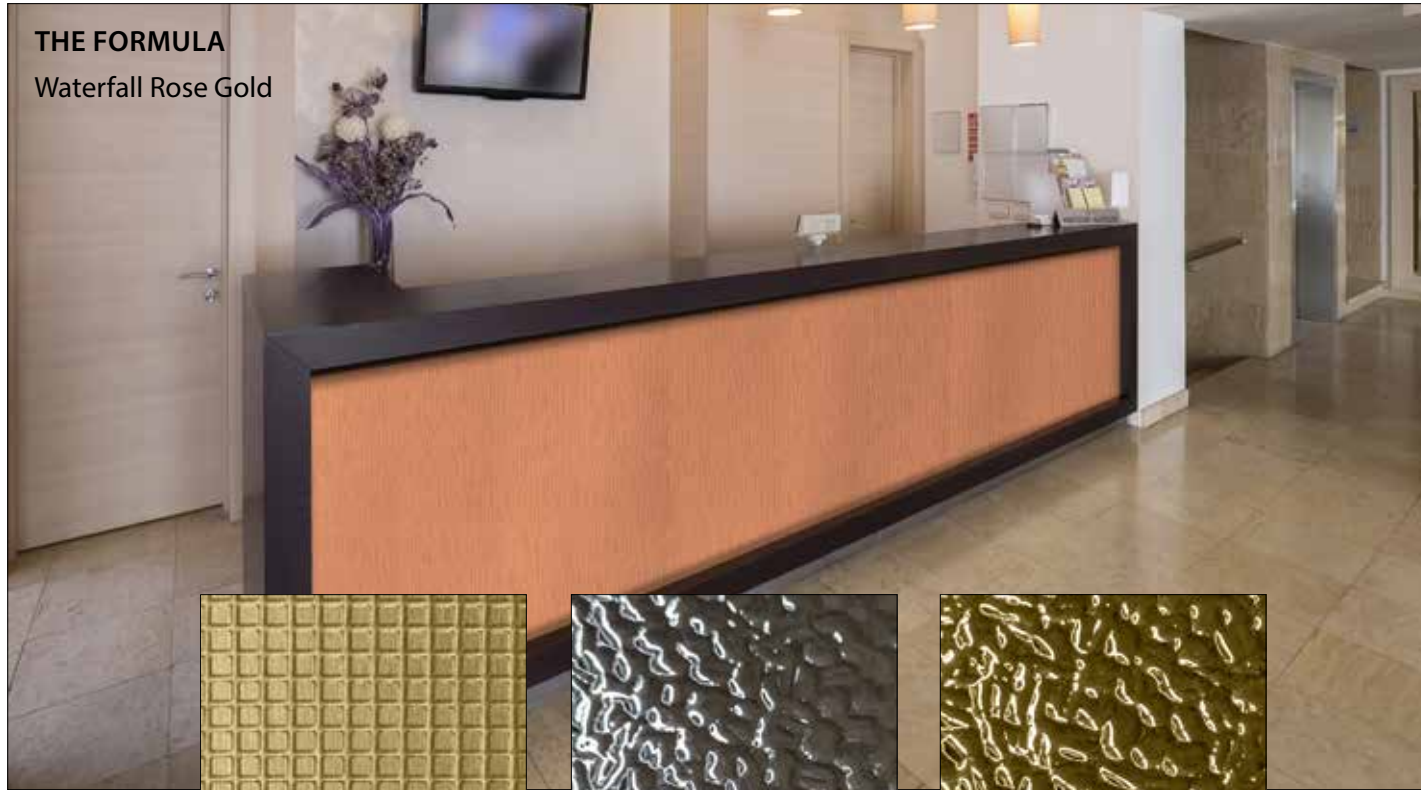
THE FORMULA
Brushed Aluminum Diamond Plate



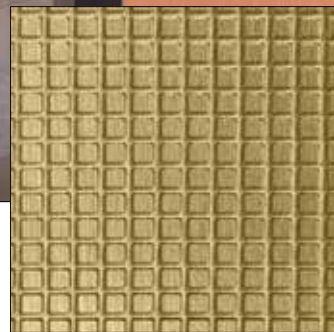
THE FORMULA
Diamond Rose Gold

Embossed Aluminum

Textured elegance



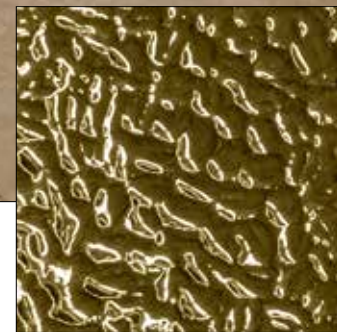
THE FORMULA
Waterfall Rose Gold



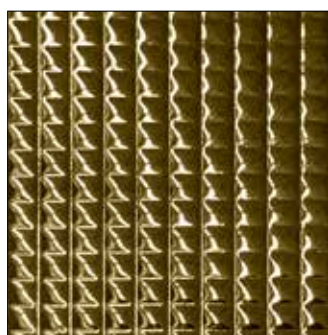
Brushed Brass Square T
251 SQT



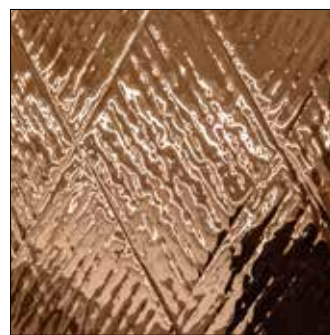
Polished Aluminum Ocean
904 OCEAN



Polished Brass Ocean
914 OCEAN



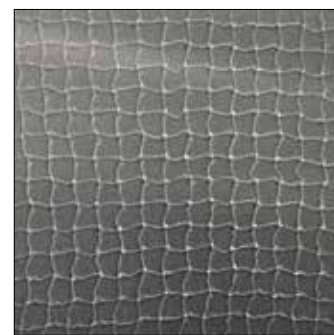
Polished Brass Square
914 SQE



Diamond Rose Gold
212 DIA



Waterfall Rose Gold
212 HM5



Brushed Stainless Mesh
256 NTZ

Embossed Aluminum Collection

Embossed aluminum offers captivating textures and versatile design options. The design possibilities are endless with these unique designs including wall panels, backsplashes, custom range hoods, countertops and bar tops, and custom furnishings.

Textured elegance

Embossed Aluminum



THE FORMULA
Horizontal Corrugated
Brushed Aluminum



Brushed Stainless Reeds
256 PTK



Horizontal Corrugated Gun
Metal Mill Aluminum
603 248



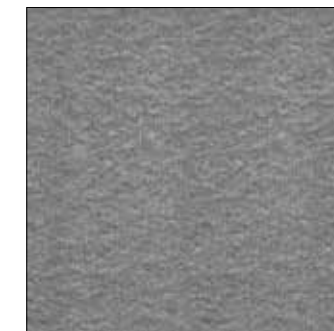
Horizontal Corrugated
Stainless
603 256



Horizontal Corrugated
Brushed Aluminum
603 924



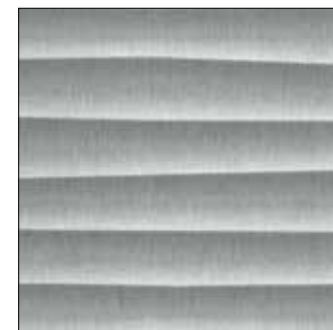
Brushed Aluminum Diamond
Plate
924 GEK



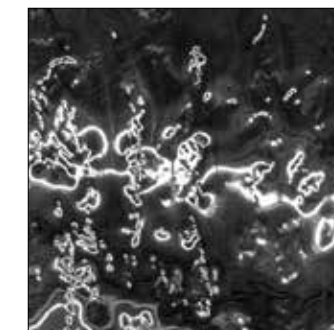
Brushed Aluminum Fine
Hammered
924 HAM



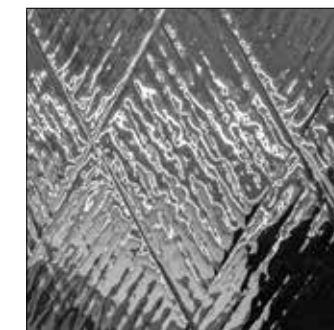
Brushed Aluminum Neptune
924 NEP



Brushed Aluminum Ridges
924 PGQ



Polished Smoke Aqua
1014 AQA



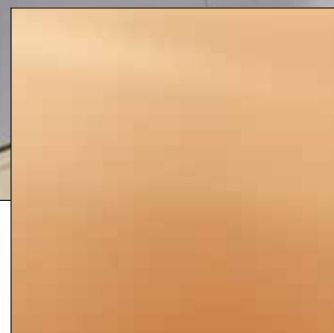
Polished Smoke Diamond
1014 DIA



Polished Smoke Neptune
1014 NEP

Aluminum

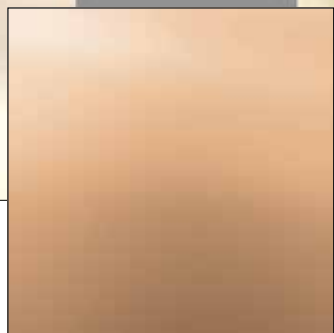
Sleek finishes



Rose Gold
212



Matte Aluminum
241



Matte Rose Gold
242



Brushed Aluminum
245



Gun Metal
248



Brushed Stainless
256G



Polished Aluminum
904



Polished Brass
914



Brushed Brass
934



Brushed Bronze
944



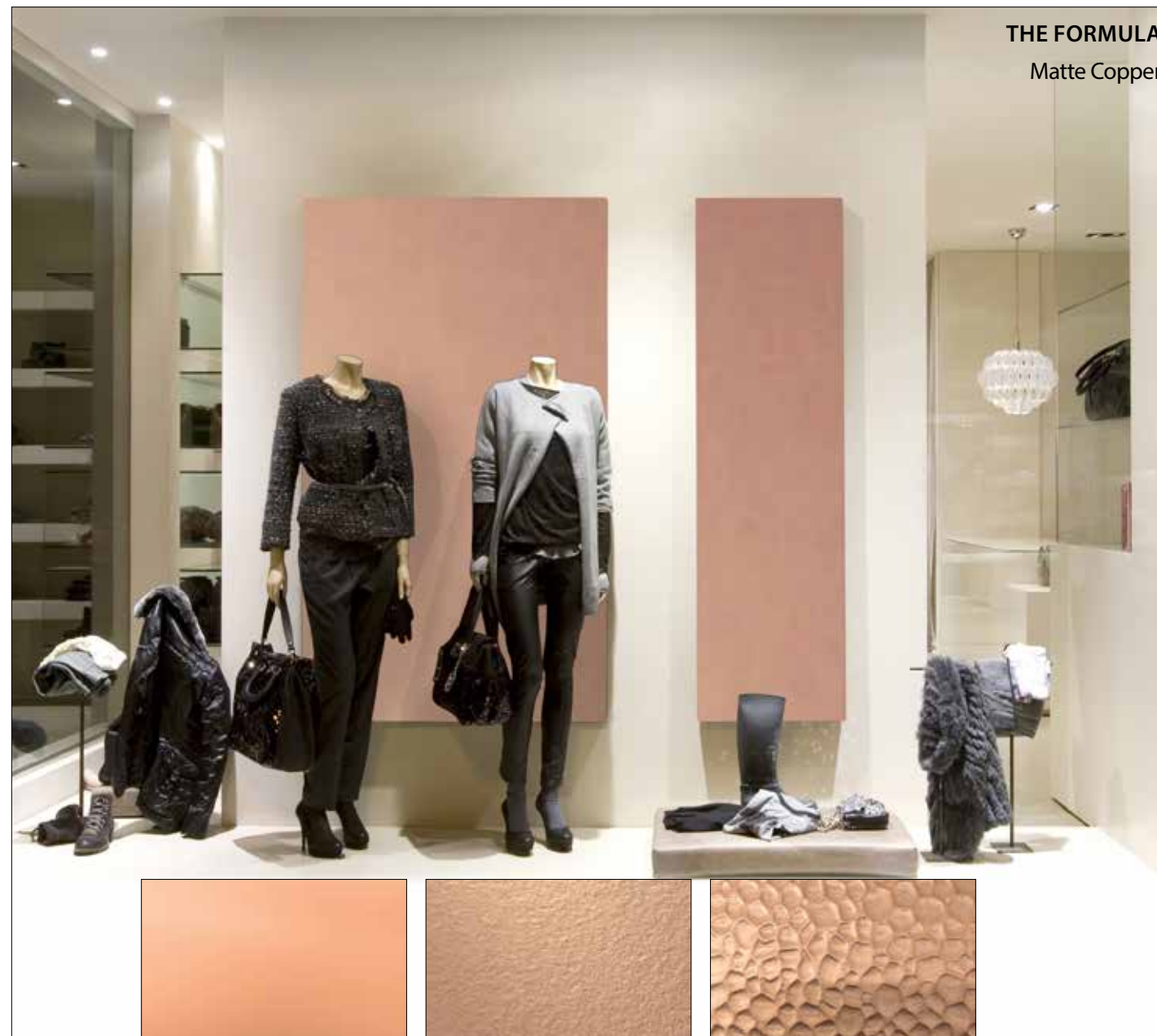
Polished Smoke
1014

Aluminum Collection

The Aluminum Collection features sleek flat sheets designed to bring a modern, polished look to any space. These versatile finishes are ideal for creating striking wall panels, backsplashes, and more.

Warmth and elegance

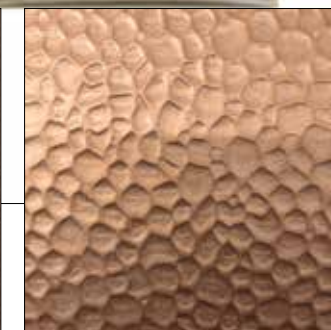
Copper



Matte Copper
C400



Fine Hammered Copper
C471



Hammered Copper
C473

Copper Collection

Bring the elegance of metal to any design project with warm and reflective copper laminates. Organic tones blended with selected embossed designs are lacquered and come with clear, removable protective film for ease in processing.

FineLine

Real metal style with a modern, durable touch

THE FORMULA

Soil of Sienna



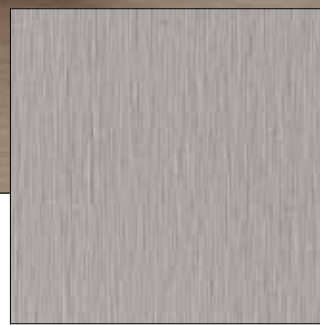
Champagne Gold
451FINE



Velvet Bronze
453FINE



Soil of Sienna
454FINE



Damast Steel
456FINE

FineLine Collection

NuMetal FineLine combines modern elegance with exceptional durability, offering a supermatt, highly resistant surface that excels in both form and function. These metals are suited for horizontal applications in millwork. Its extremely matt finish delivers a sleek, contemporary look, while the soft-touch texture enhances the user experience with a premium, high-quality feel.

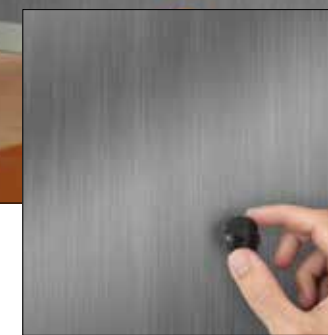
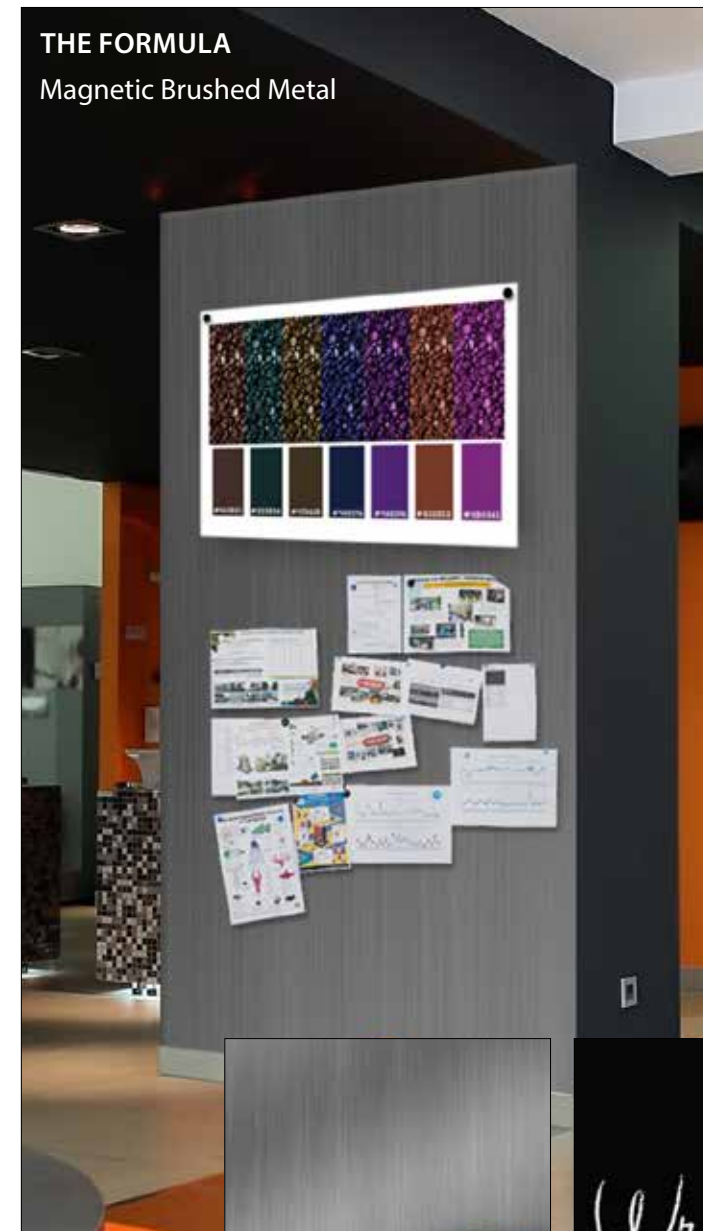
FineLine is a special order item with longer lead times.

Magnetic, writable, and wipeable

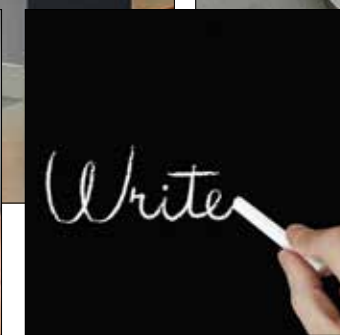
MagneticMetal

THE FORMULA

Magnetic Brushed Metal



Magnetic Brushed Metal
MH A356



Magnetic Black Chalkboard
MH E11Mat



Magnetic White Gloss Dry Erase
MH E11 Mat HGL



MagneticMetal Collection

Writable, wipeable, and magnetic HPLs offer the perfect blend of functionality and style for communication and display. These surfaces are ideal for showcasing and organizing innovative ideas in dynamic ways. Whether used for office furniture, workstations, or dividers, they bring versatility and practicality to modern, creative work environments.

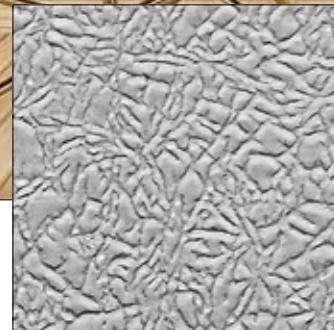


THE FORMULA

Parchment Aluminum
+ Sunburst



Choose Artful Image



Choose Aluminum Finish

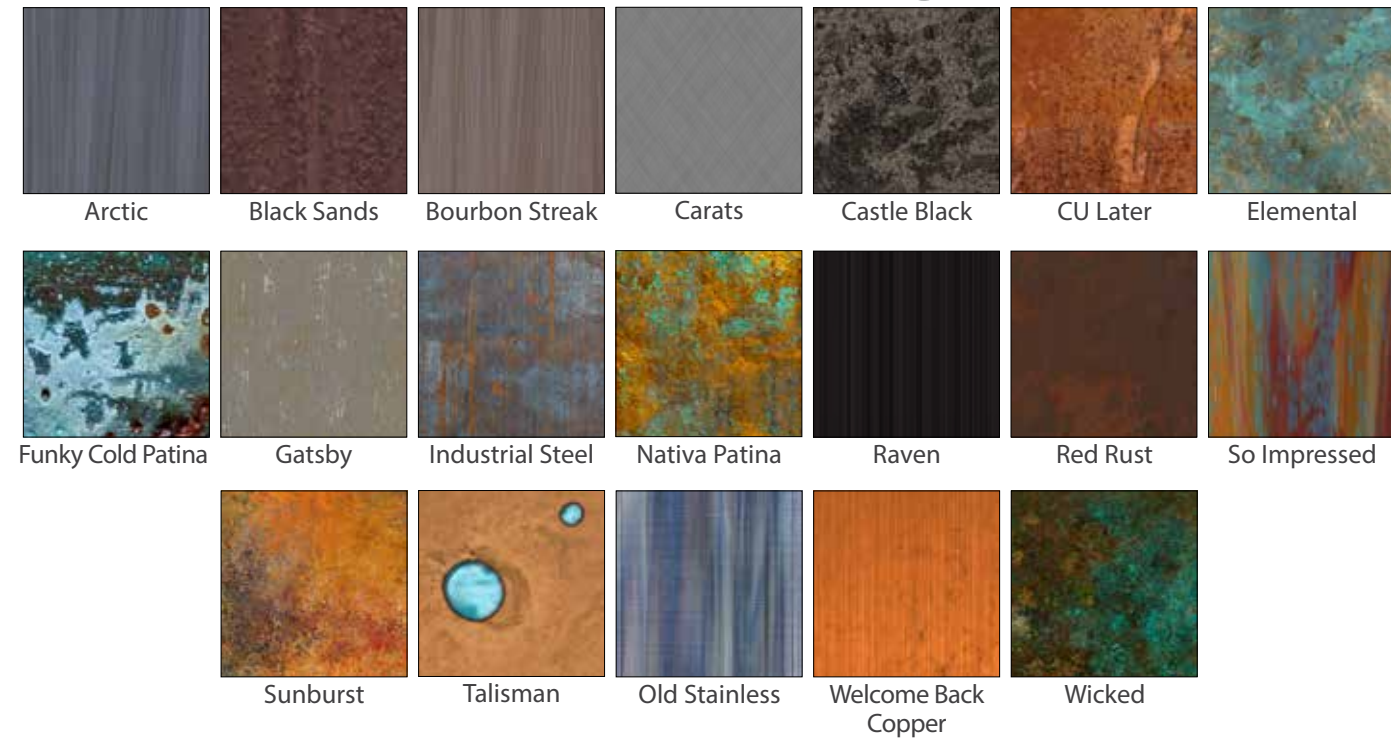


Create Unique Artful Metal!

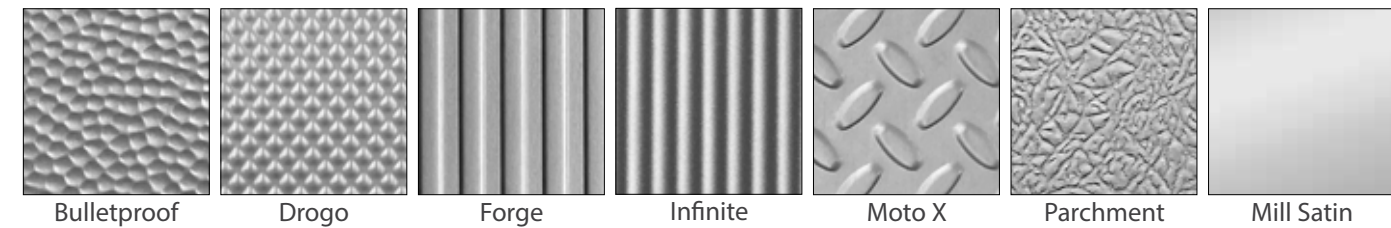
Artful Metals Collection

Design your interiors with the refined artistry of the Artful Metals Collection. Featuring 19 exclusive Artful Image options, this collection showcases a captivating range of vibrant patinas, richly oxidized coppers, and rare, artistically treated modern metals. Available in smooth and textured finishes, these surfaces bring distinctive craftsmanship to your interiors. With unbacked metal substrates that require no counterbalancing, installation is both simple and efficient, delivering a striking visual impact.

Choose Artful Image



Choose Aluminum Finish



Create the craftsmanship of Artful Metals!



THE FORMULA
Bulletproof + Elemental

An ISO 9001:2015 Certified Company

ATI Decorative Laminates is committed to continual improvement through a life-cycle approach to manufacturing and product design. By carefully selecting raw materials, optimizing yields, and implementing end-of-life management strategies, we meet today's demands while building a sustainable future.

State-of-the-Art Facility & Renewable Energy Commitment

Located on 6.5 acres in Greensboro, North Carolina, our 70,000-square-foot facility reflects our dedication to advanced manufacturing and innovation. Since 2015, our Solar Manufacturing Offset Initiative has offset over 50% of energy consumption through renewable solar energy, significantly reducing our environmental footprint.

Sustainable Products

Most NuMetal High-Pressure Laminates (HPLs) are available for special order using 100% rapidly renewable, pre-consumer recycled materials. These phenol-free laminates feature formaldehyde emissions of less than 0.01 PPM—among the lowest in the industry. The core material, made from 100% biological secondary components, is fully recyclable. Certified by Germany's EPH laboratory, our products meet CARB's stringent ATCM Phase 1 and 2 emission thresholds for HWPW, PB, and MD.

Quality & Environmental Policy

ATI is dedicated to exceeding customer expectations through on-time delivery, accurate order processing, and continuous improvement. We prioritize pollution prevention, waste reduction, and compliance with environmental laws, regularly reviewing and enhancing our sustainability targets.

Circular Manufacturing Initiatives

We are pioneering "waste-to-profit" solutions, transforming manufacturing byproducts into raw materials for other products. Collaborating with supply chain partners, we reclaim materials used in final product assembly, reducing landfill waste and advancing sustainability across our value chain.

Commitment to Community and Workforce

ATI fosters a healthy work environment for employees and protects the communities we serve. Through responsible operations and continuous improvement, we strive to create a better, more sustainable future for all.



2015 Solar
Manufacturing
Offset Initiative

ISO

9001:2015 &
14001:2015
Certified

LEED

Credits Available



Got questions? We've got you covered! At ATI, we're here to support you every step of the way with your project. Reach out to us anytime for answers or to learn more about NuMetal's possibilities.

What is NuMetal?

NuMetal is a collection of HPLs (high pressure laminates) with a thin metal surface and phenolic paper backing. These HPLs can be used for interior applications like wallcoverings, wall panels, and ceilings.

Does ATI stock any commodity-type HPLs?

ATI stocks large quantities of commodity Brushed Stainless and Brushed Aluminum sheets as part of our program.

What is Phenolic paper backing?

Phenolic paper backing consists of multiple layers of kraft paper impregnated with resin and bonded together for strength and durability.

Is phenolic paper backed metal better than unbacked metal?

In many ways, phenolic paper backed metal is superior to unbacked items. The phenolic paper backing helps protect the laminate from being dented and damaged in shipping and fabricating (it does not make the product totally resistant to damage, so the fabricator still needs to take care). Phenolic paper backed metal is also easier on router bits and saw blades, so the fabricator should get more life out of these tools using the phenolic paper backed laminate.

What is the difference between NuMetal and other similar, competitive metal lines?

The main difference is the choice and variety of items that the NuMetal line offers. Other competitors specialize in standard melamine HPLs, whereas we focus solely on the metal market. The phenolic paper-backed HPLs are all made the same way and fabricated with the same standard tools. There is more of a difference when compared to some of the unbacked metals. A lot of these items do not have a phenolic paper backing. This makes the items a little more difficult to fabricate and a little harder on fabricators' tools.

How can NuMetal be used in my project?

NuMetal is recommended for all vertical and light-duty

horizontal use. Claddings for walls or ceilings, doors or frames, furniture, light-duty horizontal surfaces, and displays are just a few examples of areas for NuMetal installation.

How about size and thickness?

NuMetal thickness is between .030" and .035. Polished aluminum surfaces are anodized. Brushed aluminum and copper surfaces are lacquered. NuMetal sheets are 4' x 8' sheets available in select designs. See pages 18 for additional details.

How is NuMetal fabricated?

NuMetal is fabricated with the same tools used on any high pressure decorative laminate and bonded to the same type of substrates commonly used in the trade. Special care must be taken to avoid denting the surface with tools or scratching the surface with particles of metal. Carbide-tipped blades and bits are recommended. Dull blades will generate heat and scorch metal.

How can NuMetal be shipped?

NuMetal can be shipped via truck, wooden crates, or rolled for courier shipment, depending on the pattern and size of the order. It is recommended that soon after receipt the NuMetal should be removed from the container and stored flat so excessive roll set does not take place.

Is there any special treatment required before or after fabrication to ensure longevity of the product?

Anodization produces a hard surface that will not tarnish and has the high abrasion resistance of aluminum. All products are covered with a clear, peel-off mask to protect the finish. This mask should be left on during fabrication to avoid marring the surface.

Is the lacquer compatible with other systems?

All brushed NuMetal Copper laminates are coated with cellulose-based lacquer. This lacquer is compatible with other lacquer systems, which allows for additional finishing if necessary.

What type of adhesive is recommended?

Any contact cement or cold-set adhesive normally used with decorative laminates is suitable. Avoid adhesive spreading or setup on metallic surface. USE ONLY NAPHTHA OR BENZINE IN ADHESIVE CLEANUP – do not use lacquer solvents or other adhesive solvents, which attack lacquer coatings.

How should NuMetal be stored?

It is important to store the product flat and not on edge, as storing on edge can cause the sheet to bow after some time. Metal laminates should be stored face up in a cool, dry area and in a completely supported flat position. Use a top sheet of chipboard or similar material to hold stored sheets flat.

How should NuMetal be cleaned?

Make sure that the cleaning agent used is compatible with either our anodized or lacquered products prior to use. Clean surfaces with a soft cloth using household cleaner - waxes, Windex-type solutions, or ordinary soap and water. Good furniture or automobile waxes provide additional protection for all metal laminate surfaces.


Are there any precautions to consider when handling the product?


Metal laminates will conduct electricity and can cause shocks or short circuits when in contact with ungrounded electrical circuits. This product is laminated aluminum or copper of the highest quality and brilliance. Slight surface imperfections are normal. PLEASE INSPECT CAREFULLY PRIOR TO USE to ensure the material is suitable for your needs.

Is counterbalancing necessary for NuMetal?


Counterbalancing is required for High Pressure Laminates to prevent substrate warping. However, Artful Metals is unique and requires no counterbalancing.

Contact ATI Laminates

 Call: 800.849.1320

 Text: 336.541.2330

 email: sales@advtechnology.com

 ATILaminates.com/NuMetal
Live Chat feature also available!

Collection	Product Name + Finish	Item Number	Rollable for Shipment
Aluminum	Rose Gold	212	•
	Matte Aluminum	241	•
	Matte Rose Gold	242	•
	Brushed Aluminum	245	•
	Gun Metal	248	•
	Brushed Stainless	256 G	•
	Polished Aluminum	904	•
	Polished Brass	914	•
	Brushed Brass	934	•
	Brushed Bronze	944	•
	Polished Smoke	1014	•
	Embossed Aluminum	Brushed Brass Square T	251 SQT
Polished Aluminum Ocean		904 OCEAN	•
Polished Brass Ocean		914 OCEAN	•
Polished Brass Square		914 SQE	•
Diamond Rose Gold		212 DIA	•
Waterfall Rose Gold		212 HM5	•
Brushed Stainless Mesh		256 NTZ	•
Brushed Stainless Reeds		256 PTK	•
Horizontal Corrugated Gun Metal Mill Aluminum		603 248	•
Horizontal Corrugated Brushed Stainless		603 256	•
Horizontal Corrugated Brushed Aluminum		603 924	•
Brushed Aluminum Diamond Plate		924 GEK	•
Brushed Aluminum Fine Hammered		924 HAM	•
Brushed Aluminum Neptune		924 NEP	•
Brushed Aluminum Ridges		924 PGQ	•
Polished Smoke Aqua		1014 AQA	•
Polished Smoke Diamond	1014 DIA	•	
Polished Smoke Neptune	1014 NEP	•	
Copper	Matte Copper	C400	•
	Fine Hammered Copper	C471	•
	Hammered Copper	C473	•
FineLine	Champagne Gold	451 FINE	•
	Velvet Bronze	453 FINE	•
	Soil of Siena	454 FINE	•
	Damaste Steel	456 FINE	•
MagneticMetal	Magnetic Brushed Metal	MHA 356	•
	Magnetic Black Chalkboard	MH E11 MAT	•
	Magnetic White Gloss Dry Erase	MH E11 MAT HGL	•
Artful Metals	All Options	All Options	

Your satisfaction and delivering exceptional value are what we strive to achieve.

Technical Specifications

Please see the Technical Specs on our website at: ATILaminates.com/Resources.

Return Policy

All shipments are to be inspected within 10 working days after delivery. ATI is to be informed in writing of any potential adjustment necessary. If returned undamaged, return of first-quality stocked items subject to a 20% restock fee.

Samples

Due to printer and digital screen limitations, patterns and finishes shown in this catalog may not accurately reflect NuMetal products. Request tangible samples to be verified and approved prior to specification and final application. Samples are available upon request. Be sure to visit us online at ATILaminates.com for the latest designs and finishes.




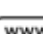
Conditions and Warranty

ATI Decorative Laminates warrants to the original consumer purchaser for one (1) year after date of purchase that, under normal use and service, MirroFlex, Fusion, NuMetal, and LumiSplash products are free from manufacturing defects and conform to published specifications. This warranty applies as long as the consumer purchaser and/or installer follows ATI's installation instructions (methods), which also includes using recommended adhesives, when adhering ATI's products to recommended surfaces. ATI Decorative Laminates' products are intended for primarily interior applications.

ATI Decorative Laminates believes all information contained herein to be correct. It is the responsibility of the fabricator/customer to completely test the adhesives and methods of fabrication to ensure that the results are satisfactory. The seller's only obligation will be to replace product on a one-to-one basis in the event it is covered under the above warranty. ATI is not responsible for any fabrication, ancillary, or labor costs involved with using its products. Neither the manufacturer nor the seller shall be liable for any additional damage or loss, directly or indirectly, arising as a result of using its products.

Slight imperfections and color variations can occur and are considered normal. Please inspect each product carefully before fabrication to ensure it meets your needs.

Contact ATI Laminates

-  Call: 800.849.1320
-  Text: 336.541.2330
-  email: sales@advtechnology.com
-  ATILaminates.com/NuMetal
Live Chat feature also available!

Follow Us on Social



IMPORTANT DISCLAIMER: While we strive to provide accurate information, please note that we are not fabricators. The details shared here are based on feedback from fabricators who have successfully worked with NuMetal. It is the sole responsibility of the fabricator to thoroughly test adhesives and fabrication methods to ensure they meet their specific requirements. We cannot be held accountable for any fabrication costs associated with the use of NuMetal. For more details, please refer to our warranty section on page 19.



Design Beyond the Surface

ATILaminates.com/NuMetal

800.849.1320