



# NuMetal<sup>®</sup>

High Pressure Laminates with  
a Real Metal Surface

Commercial  
Healthcare + Institutional  
Hospitality  
Retail

ASSION  
SAN  
Free  
ERY



## Design Beyond the Surface

ATI Decorative Laminates is a leading manufacturer of decorative surfacing solutions. Headquartered in Greensboro, NC since 1979, ATI provides solutions for the hospitality, healthcare and institutional, retail, commercial, and residential markets. Through our commitment to continuous improvement and our strong company values, our goal is to provide superior decorative products, quality customer service, and foster long-lasting relationships.

ATI products can be specified under the following CSI divisions:

- 074200 – Fusion Unbacked Aluminum Sheets
- 097800 – NuMetal High Pressure Laminates and Fusion Unbacked Aluminum Sheets
- 123600 – NuMetal High Pressure Laminates

### ATI Decorative Laminates

6106 West Market Street | Greensboro, NC 27409  
800.849.1320 | 336.668.0488 | Fax: 336.668.0713 | ATILaminates.com

ISO 9001:2015 Certified | ISO 14001:2015 Certified | HUB (Historically Underutilized Business) Certified

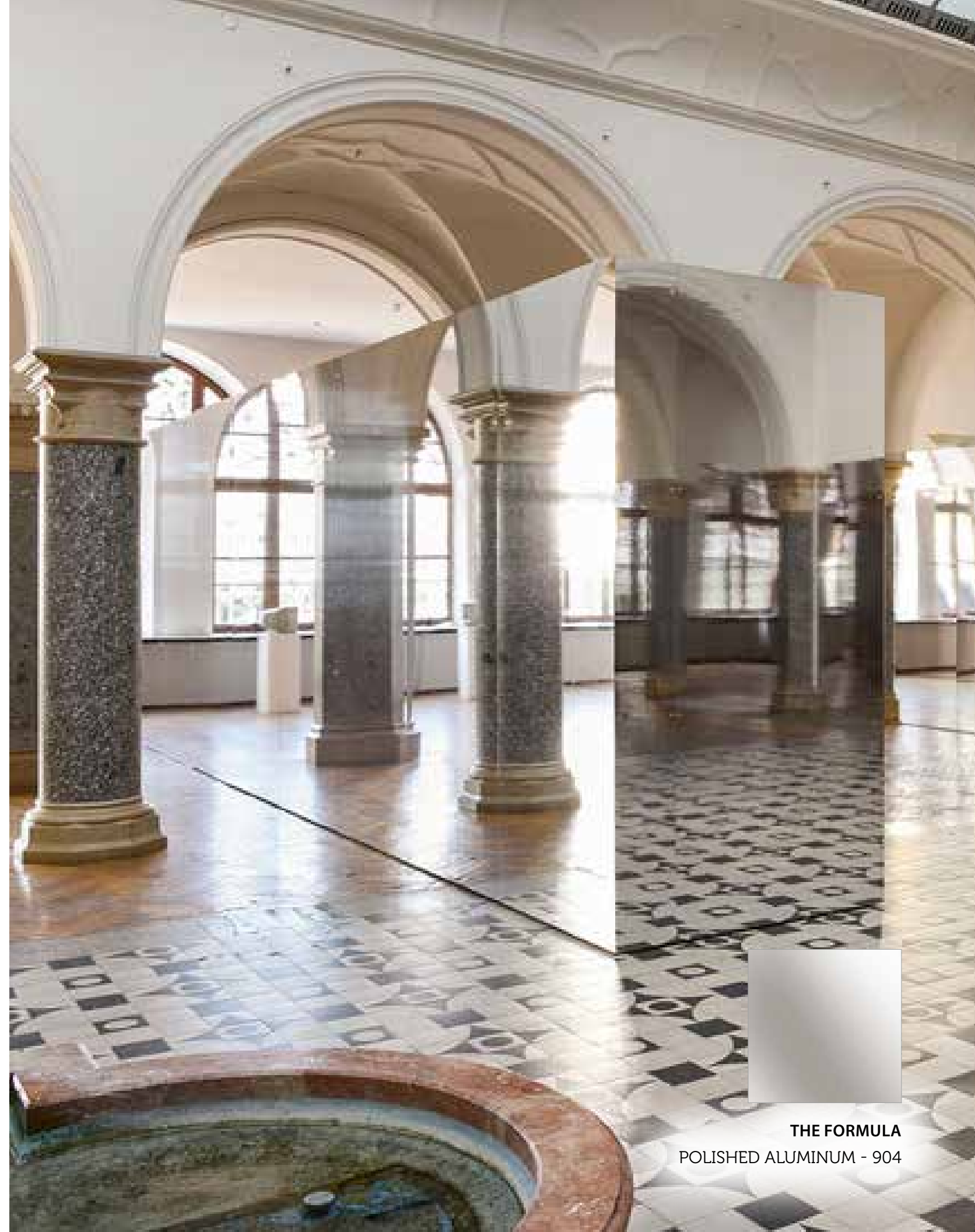


THE FORMULA

BRUSHED STAINLESS RIDGES - 256 PGQ

# Contents

<b>Design Beyond the Surface</b>	
What is NuMetal™?	2
Why Choose NuMetal?	4
<b>NuMetal Collection</b>	
A Variety of Real Metal Surfaces	8
Aluminum Collection	10
Copper Collection	12
Unique Art Collection	13
MagneticMetal	14
<b>Case Studies</b>	
Airstream	16
<b>Sustainability</b>	18
<b>Artful Metals Collection</b>	
Unbacked Specialty Metals	21
Designs	22
<b>FAQs</b>	24
<b>Quick Reference Guide</b>	26
<b>How to Order</b>	27



**THE FORMULA**  
POLISHED ALUMINUM - 904

# Design Beyond the Surface

## What is NuMetal?

NuMetal is a collection of HPLs (High Pressure Laminates) with a real metal surface and phenolic paper backing. NuMetal sheets are usually 4' x 8' sheets (4' x 10' available on special order) in Aluminum or Copper; featuring embossing, hand painting, etching, and other innovative techniques to enhance the look of metals. High quality design solutions are its trademark. NuMetal is suitable for vertical and light-duty horizontal applications including wall panels, backsplashes, countertops, accent walls, store fixtures, point-of-purchase (POP) displays, and more.

The majority of ATI's products are created for commercial spaces where durability of design reigns supreme. As experts in surfaces that remain abrasion resistant, in addition to performance, NuMetal products meet safety and material standards. ATI distributes NuMetal to hospitality, healthcare and institutional, retail, and commercial design markets.

Feel the pull of our MagneticMetal surfaces! Writable, wipeable, magnetic HPLs are perfect for communication and display. Create spaces that showcase and organize unique and creative ideas.

Look for The Formula  
Design + Finish = NuMetal

### THE FORMULA

Waterfall Rose Gold + 212 HM5 (Pictured Right)

Product name with design + finish

Product number

Items Shown as Concept (If Applicable) 



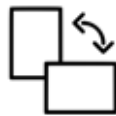
Real Metal Surfaces



Embossing, Etching, and Hand Painting



Magnetic Surfaces Available



Suitable for a Variety of Applications



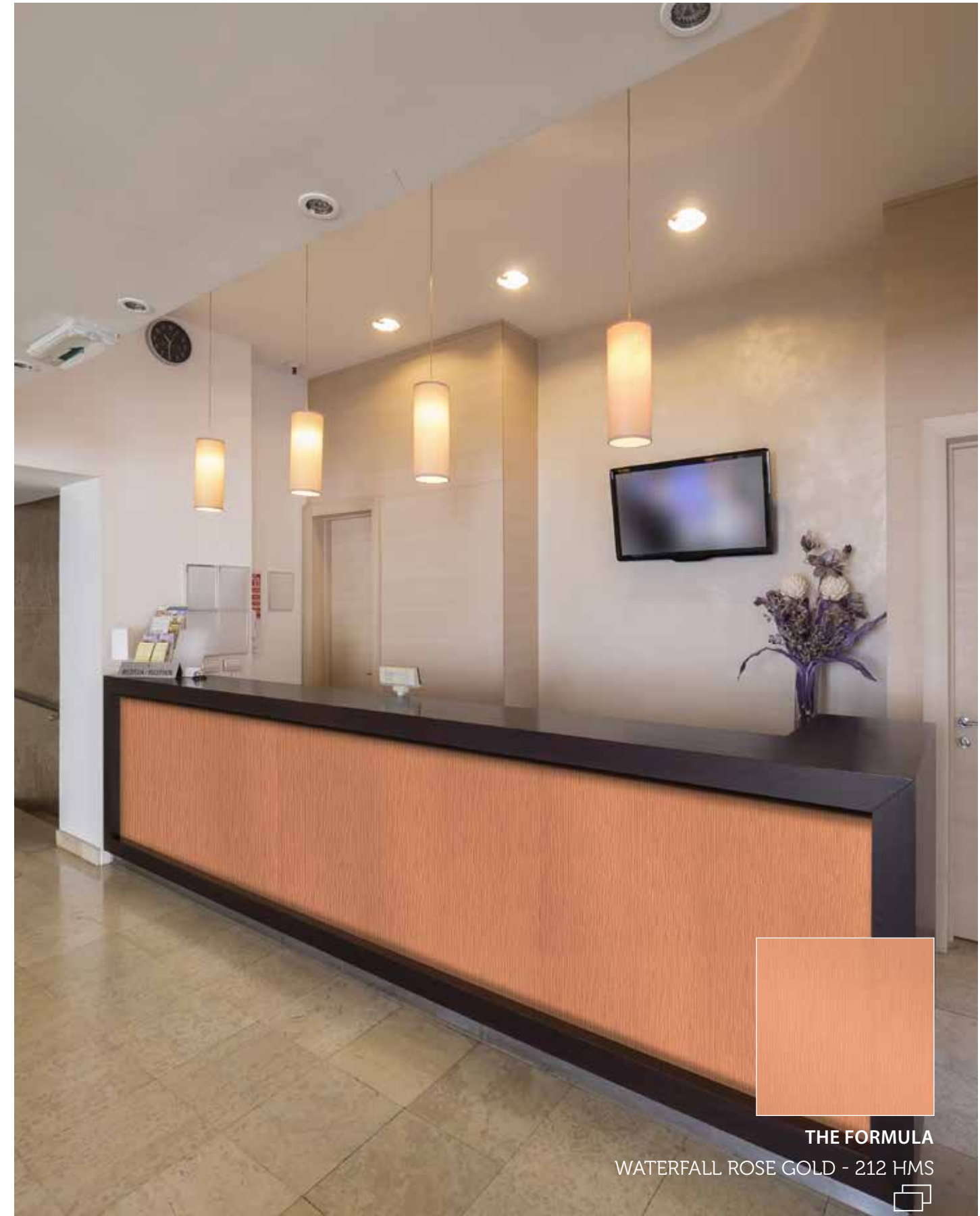
Durable Surfaces



Unbacked + Phenolic Backed Designs



Variety of Options Stocked In-House



THE FORMULA  
WATERFALL ROSE GOLD - 212 HMS

# Solving Your Design Needs



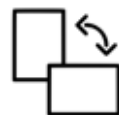
Real Metal Surfaces



Embossing, Etching, and Hand Painting



Magnetic Surfaces Available



Suitable for a Variety of Applications



Durable Surfaces



Unbacked + Phenolic Backed Designs



Variety of Options Stocked In-House

## Why Choose NuMetal?

### 1. HPLs (High Pressure Laminates) with Real Metal Surfaces

Available in real aluminum and copper surfaces with a phenolic paper backing. Like other HPLs, counterbalancing is required to prevent warping of the substrate.

### 2. High Quality, Handmade Designs

NuMetal offers design flexibility and is available as flat sheets or with a combination of embossed designs and a finish. The items shown on pages 12-17 are available in 4' x 8' and stocked. We have special order requirements for 4' x 10' size.

### 3. Suitable for a Variety of Applications

NuMetal is suitable for a variety of vertical and light-duty horizontal applications including wall panels, backsplashes, countertops, accent walls, store fixtures, point-of-purchase (POP) displays, and more.

### 4. Protective Coating for Durable Surfaces

Most NuMetal products are coated with a lacquer to ensure durability and abrasion resistance. Polished finishes are anodized and will not tarnish. All NuMetal products are also covered with a clear peel off masking to protect the finish. This masking should be left on during fabrication to avoid damaging the surface.

### 5. Special Order Items

Many other design and finish combinations are available for special order. Be sure to contact your ATI Customer Service Representative at 800.849.1320 for more information.

### 6. Eco-Friendly Options Available

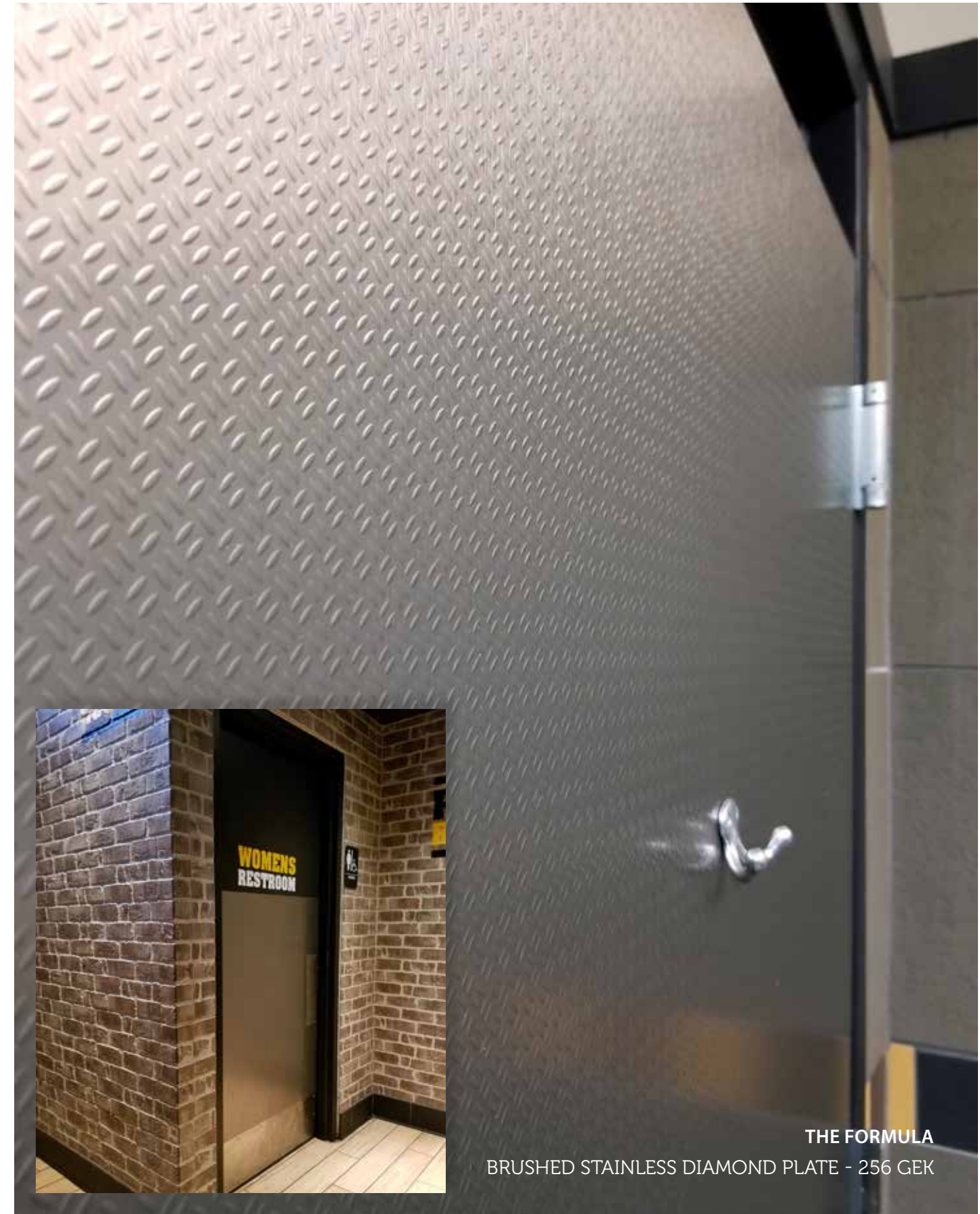
NuMetal is made from pre-consumer materials that are phenol-free and CO2 neutral. The core is made of 100% biological secondary components obtained from renewable resources and is fully recyclable.

### 7. Low Minimum Order Quantities

Whether you need one sheet for a finishing touch or 100 for your project, we've got you covered. Stocked items are ready to ship within 1-2 weeks.

### 8. Shipped to You from an ISO Certified Facility

ATI is ISO Certified which enables us to have the "hands on" control necessary to maintain the high standards customers expect from us. Your NuMetal sheets will be thoroughly inspected by our Quality Control Team before we ship your order.



THE FORMULA  
BRUSHED STAINLESS DIAMOND PLATE - 256 GEK

# NuMetal Collection

Aluminum  
Copper  
Unique Art  
MagneticMetal  
Special Order Items



# NuMetal Collection

## Choose from a Variety of Real Metal Surfaces

With dozens of options to choose from, NuMetal is the perfect high-end solution for your application that can be used as wall panels, backsplashes, countertops, accent walls, point-of-purchase (POP) displays, store fixtures, and more. We can help you find which one is best for your project!



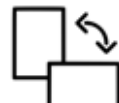
Real Metal Surfaces



Embossing, Etching, and Hand Painting



Magnetic Surfaces Available



Suitable for a Variety of Applications



Durable Surfaces



Unbacked + Phenolic Backed Designs



Variety of Options Stocked In-House

### Aluminum Collection

All Aluminum finishes are available in flat sheets or with embossed designs added. Most finishes are lacquered for abrasion resistance. The polished finishes are anodized.

### Copper Collection

Bring the elegance of metal to any design project with warm and reflective copper laminates. Organic tones blended with selected embossed designs are lacquered and come with clear, removeable protective film for ease in processing.

### Unique Art Collection

Truly unique works-of-art, these surfaces offer rich colors and materials in their design. Hand painted by artists using techniques that allow for repeatability, sheets have slight artistic differences. Protected with a high-quality lacquer process to ensure durability, these laminates can be used in both low and high-traffic areas.

### MagneticMetal Collection

Feel the pull of our newest MagneticMetal; writeable and magnetic high-pressure laminate surfaces. Our specially embedded magnetic core allows you to attach presentations and notes with ease. Perfect for office furniture, workstations, dividers, these surfaces are versatile for today's modern, creative workspaces.

### Artful Metals Collection

Create unique wall panels with our unbacked metal and patina-inspired Artful Metals. They range from bright, colorful patinas and rich oxidized coppers, to rare and artistic, modern-treated metals. Available in smooth and textured options.

NuMetal offers design flexibility and is available as flat sheets or with a combination of embossed designs and a finish. The items shown on the following pages are stocked in-house. However, many other combinations are available for special order.



**THE FORMULA**  
MAGNETIC WHITE DRY ERASE  
MH E11 Mat HGL

# Aluminum

All Aluminum finishes are available in flat sheets or with embossed designs added to the finish. Most finishes are lacquered for abrasion resistance. The polished finishes are anodized and will not tarnish.

View the entire NuMetal Collection and Order Samples at [ATILaminates.com/NuMetal](http://ATILaminates.com/NuMetal) 



Aluminum Gun Metal  
248



Aqua Polished Smoke  
1014 AQA



Aqua Rose Gold  
212 AQA



Brushed Aluminum  
245



Corrugated Brushed  
Stainless Steel  
603/256



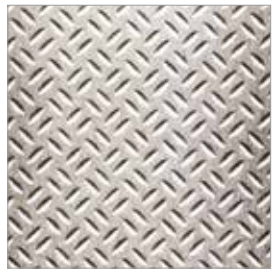
Diamond Mill  
Gun Metal  
248 DIA



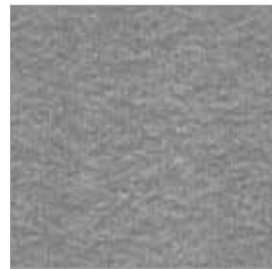
Diamond Polished  
Smoke  
1014 DIA



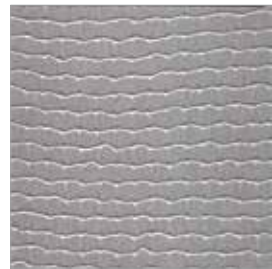
Diamond Rose Gold  
212 DIA



Brushed Aluminum  
Diamond Plate  
924 GEK



Brushed Aluminum  
Fine Hammered  
924 HAM



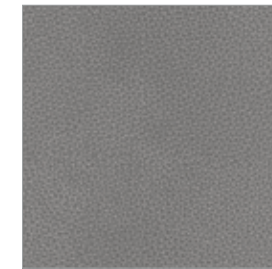
Brushed Aluminum  
Mesh  
924 NTZ



Brushed Aluminum  
Ridges  
924 PGQ



Gun Metal Mill  
603/248



Neptune Brushed  
Aluminum  
924 NEP



Neptune Polished  
Smoke  
1014 NEP



Neptune Rose Gold  
212 NEP



Brushed Brass  
934



Brushed Bronze  
944



Brushed Stainless  
256G



Brushed Stainless  
Diamond Plate  
256 GEK



Polished Aluminum  
904



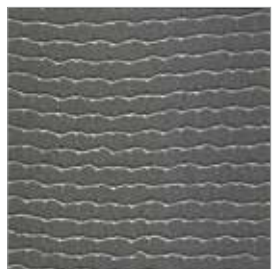
Polished Brass  
914



Polished Smoke  
1014



Rose Gold  
212



Brushed Stainless  
Mesh  
256 NTZ



Brushed Stainless  
Reeds  
256 PTK



Brushed Stainless  
Ridges  
256 PGQ



Corrugated Brushed  
Aluminum  
603/924



Titan Aluminum  
Gun Metal  
248 BKE



Waterfall Aluminum  
Gun Metal  
248 HM5



Waterfall Rose Gold  
212 HM5



# Copper

Bring the elegance of metal to any design project with warm and reflective copper laminates. Organic tones blended with selected embossed designs are lacquered and come with clear protective film for ease in processing.



**THE FORMULA**  
MATTE COPPER - C400



Matte Copper  
C400



Fine Hammered  
Copper  
C471



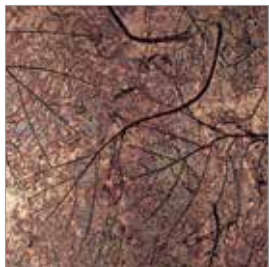
Hammered Copper  
C473

# Unique Art

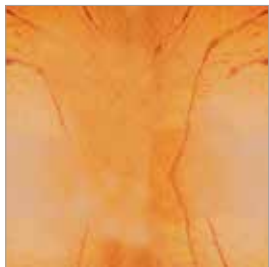
The Unique Art Collection offers rich colors and hand painting techniques, in their designs. As a result, slight differences will be seen from sheet to sheet. Protected with a high-quality lacquer to ensure durability.



**THE FORMULA**  
PATINA AUTUMN LEAVES - C421



Patina Autumn Leaves\*  
C421



Patina Onyx\*  
C412



Madrid\*  
CA5

\* Limited Stock

# MagneticMetal

Writable, wipeable, magnetic HPLs are perfect for communication and display. Create spaces that showcase and organize unique and creative ideas.

View the entire NuMetal Collection and Order Samples at [ATILaminates.com/NuMetal](http://ATILaminates.com/NuMetal) 



THE FORMULA  
MAGNETIC BRUSHED METAL MH A356



THE FORMULA  
MAGNETIC BLACK CHALKBOARD MH E11MAT



THE FORMULA  
MAGNETIC WHITE GLOSS MH E11 MATHGL



Magnetic Brushed Metal  
MH A356



Magnetic Black Chalkboard  
MH E11Mat



Magnetic White Gloss Dry Erase  
MH E11 Mat HGL



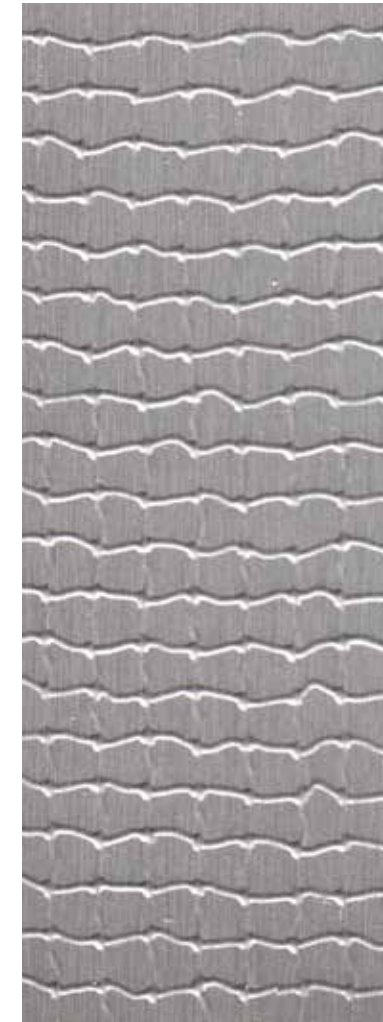
### Airstream

#### CHALLENGE

PROVIDE A LOW MAINTENANCE SURFACE THAT FITS WITH THE STYLE OF AN ICONIC AMERICAN BRAND.

#### THE FORMULA

BRUSHED ALUMINUM MESH - 924 NTZ



BRUSHED ALUMINUM MESH  
924 NTZ

#### THE DETAILS

**64** SQ FEET

In Every "Classic 2015, 2016, & 2017" Trailer

**3,200** SQ FEET  
of Material Per Month

**85,000+** SQ FEET  
Specified to Date

#### BACKGROUND

In 1929, Wally Byam set out to build a sleek, light-weight travel trailer with all the commodities of home. Some 85 years later, his iconic Airstream trailer remains a symbol of American adventure and discovery.

ATI has worked with Airstream and its team of designers on several occasions, with the company specifying Aluminum Mill 204 sheets in its 2014 Sterling trailer.

#### CHALLENGE

The year 2015 marked a significant remodel of Airstream's flagship product, the Classic trailer, where they once again called on ATI for interior surface solutions because, as one designer put it, "We know they do some pretty cool things."

#### SOLUTION

In keeping with Airstream's commitment to light-weight design, they selected the Brushed Aluminum Mesh 924 NTZ as the galley kitchen's backsplash and divider wall. Aluminum laminate is a perfect match because of its flexibility and ease of use. Airstream previously used Aluminum Mill 204 as the finishing laminate for the kitchen divider walls.

ATI's level of service, brand equity and product integrity, as well as their reliability, are just some of the reasons Airstream continues to call upon the family-owned laminate manufacturer, based in Greensboro, NC.

Just like the Classic, NuMetal is designed for long-term adventures.



# Sustainability

As an ISO 9001:2015 certified company, we are committed to continual improvement through our life-cycle approach to manufacturing and quality product design. From our selection of raw materials and maximization of material yields through our manufacturing processes and end-of-life management strategies, ATI serves the demands of today's customer while preparing for tomorrow.

Manufacturing capabilities have constantly improved through the years and ATI's present location is on 6.5 acres centrally located in Greensboro, North Carolina, in a 70,000 square foot, state-of-the-art facility.

Since our 2015 Solar Manufacturing Offset Initiative, over 50% of our energy consumption has been offset by renewable solar energy.



Most **NuMetal** HPLs are available for special order, in 100% rapidly renewable, pre-consumer recycled materials that are phenol-free and have formaldehyde emissions of less than 0.01 PPM – one of the lowest in the industry. The core is made of 100% biological secondary components obtained from renewable resources and is fully recyclable.

Through a third party, Development and Test Laboratory for Wood Technology (EPH) in the Institute for Wood Technology in Germany, this product was analyzed and certified according to (EN DIN 717/1) the emission thresholds of CARB's Airborne Toxic Control Measure (ATCM) Phase 1 and 2 for HWPW, PB, and MD.

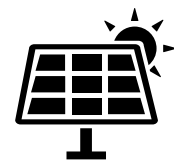
**ATI's Quality & Environmental Policy:** ATI is committed to meeting customer expectations with on-time delivery, accurate order processing, and continuous improvements to our organization.

We are investigating alternate methods of minimizing our fall off through "waste-to-profit" networking where our manufacturing waste becomes material for another product.

Our commitments don't end at the door. We understand that our supply chain partners are part of our environmental footprint. We are working with our suppliers to reclaim materials that go into our final product assembly – further minimizing the manufacturing waste that ends up in a landfill.

ATI is committed to maintaining a healthy work environment for our employees and to protecting our community in which we operate. Through continuous improvement we pledge to:

- Conduct our operations in compliance with all applicable environmental laws and regulations as well as other requirements.
- Review our established targets and objectives.
- Prevent pollution and minimize waste.



2015 Solar  
Manufacturing  
Offset Initiative

ISO  
9001:2015 &  
14001:2015  
Certified

LEED  
Credits Available



## Our Journey to Sustainability

At ATI Decorative Laminates, we understand sustainability is a journey of ongoing improvement and innovation.



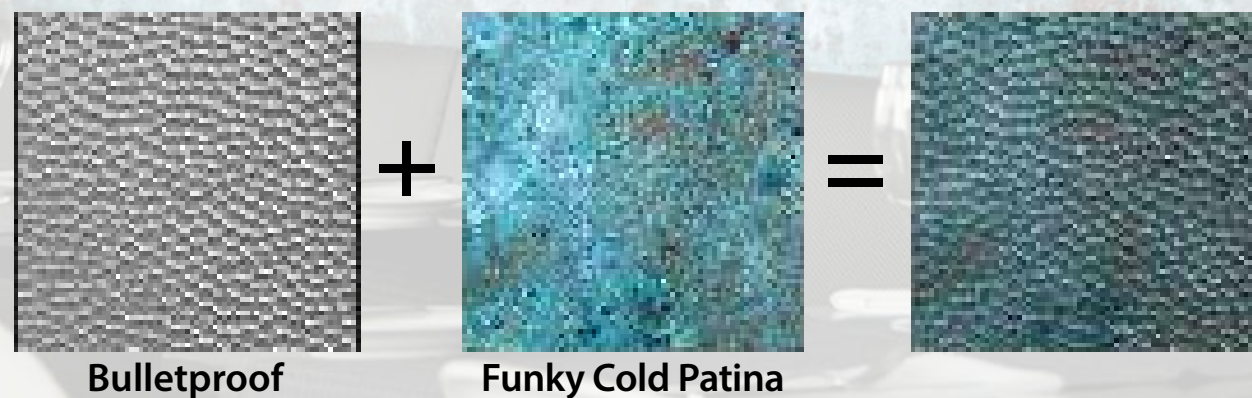
THE FORMULA

BRUSHED ALUMINUM RIDGES - 924 PGQ

# Artful Metals Collection

Modern Designs  
Colorful Patinas  
Rich Oxidized Coppers  
Easy to Install  
Unbacked Metals

**Pictured above:**



**Bulletproof**

**Funky Cold Patina**

## Modern Designs Available on Unbacked Specialty Metals

Our Fusion product line offers the Artful Metals Collection. Artful Metals are 19 unique metal and patina-inspired wall panel designs ranging from bright colorful patinas and rich oxidized coppers, to rare and artistic, modern-treated metals.

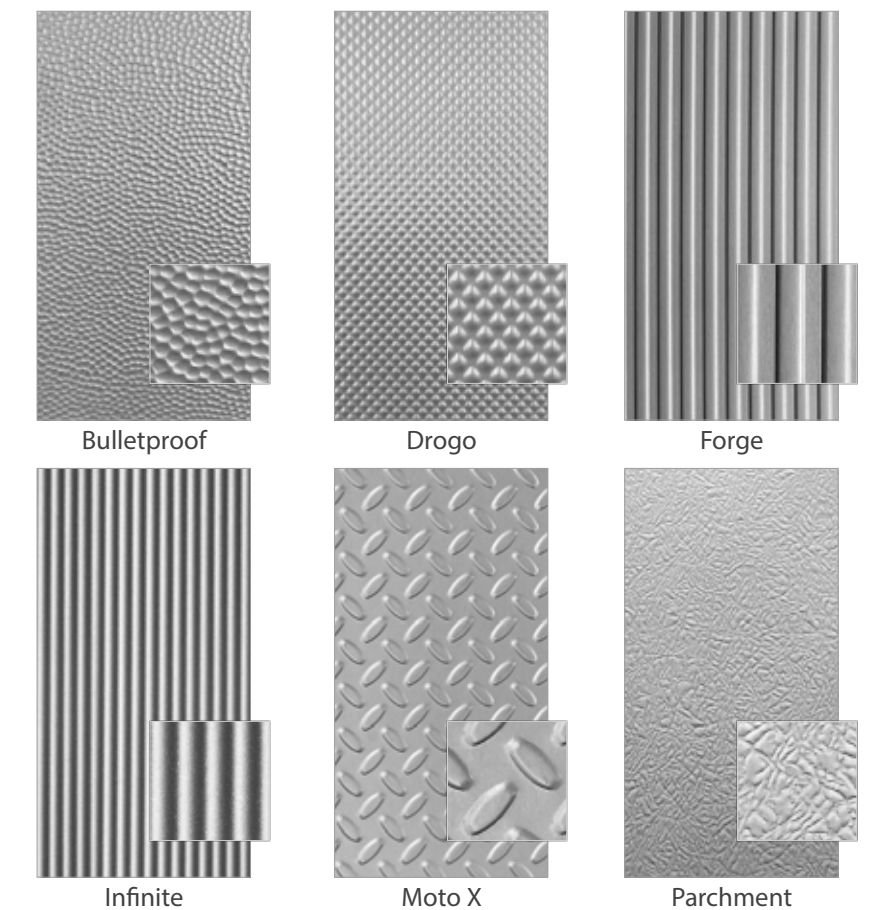
The Artful Metals Collection is available on ATI's 4' x 8' unbacked metal substrates. Our unbacked metal substrates are easy-to-install with no counterbalancing required. Available in Mill Satin and 6 Fusion Textured Metals. These deep-textured metals are engineered metal surfaces with 3D textures. They are created by a unique process, which enhances their durability and beauty.

With the Artful Metals Collection, you can create a unique decorative surfacing solution for your application that can be used as wall art, decorative wall protection, large-scale murals, wall dividers, and more.

### Unbacked Metal Substrates:

- Mill Satin (Smooth, "Raw" Aluminum, 4' x 8' Sheets)
- 6 Fusion Textured Metals (Uniquely Textured, 4' x 8' Sheets)

### Fusion Textured Metals



Bulletproof

Drogo

Forge

Infinite

Moto X

Parchment

*Patterns are shown enlarged for your viewing pleasure! Please order samples for actual pattern size.*

### Features

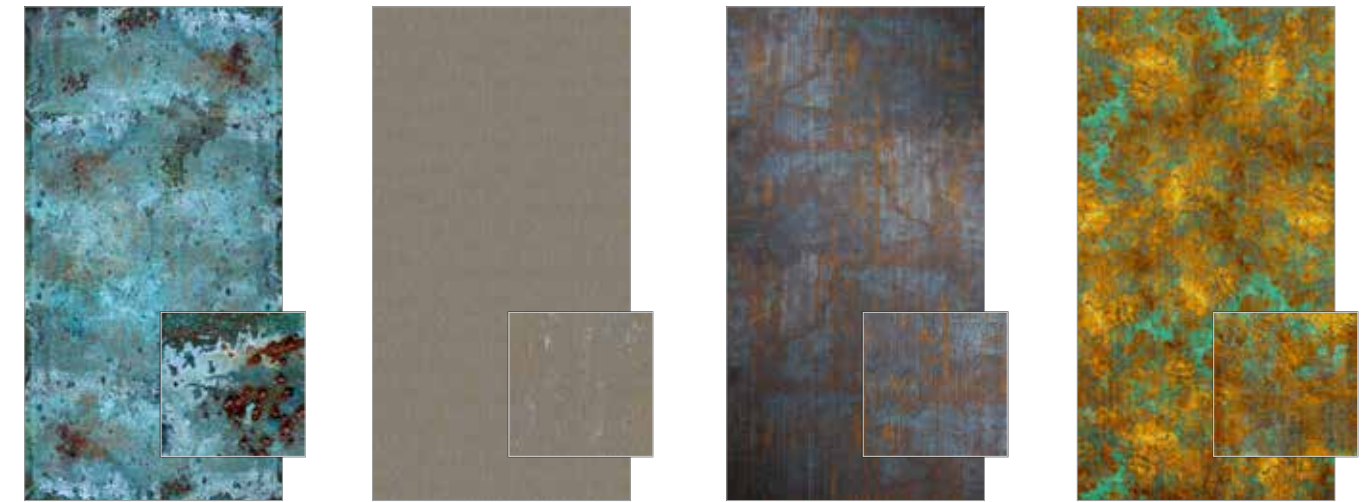
- 19 Unique Metal Designs
- Custom Capabilities
- Easy to Install, Unbacked Specialty Metals
- Can be Bent for Some Curved Applications
- Abrasion + Impact Resistant Options Available
- Chemical Resistant
- Stain Resistant
- ArmorCoat™ Added to Some Fusion Substrates

# Artful Metals Collection

## Be Inspired: 19 Unique Metal and Patina-Inspired Designs

Combine these Artful Metal designs with Mill Satin or Fusion Textured Metals to create a custom look for your space.

The math is easy!



Funky Cold Patina

Gatsby

Industrial Steel

Native Patina

Represents 4' x 8' Panel Size

Represents 2' x 2' Section

Design Name



Artic



Black Sands



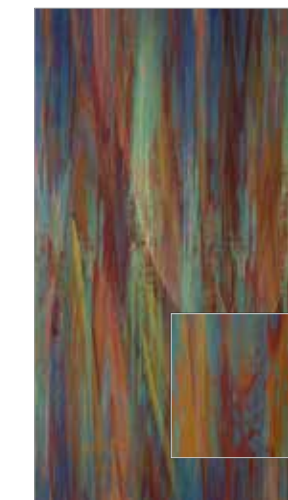
Bourbon Streak



Raven



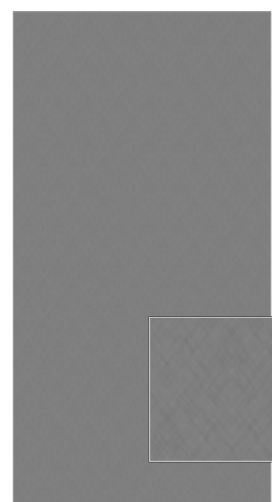
Red Rust



So Impressed



Sunburst



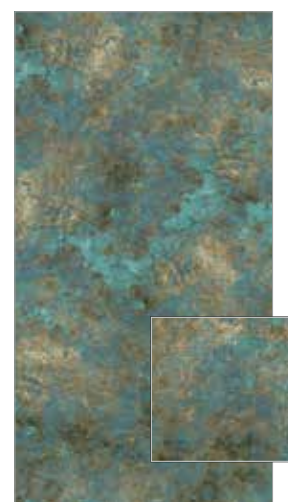
Carats



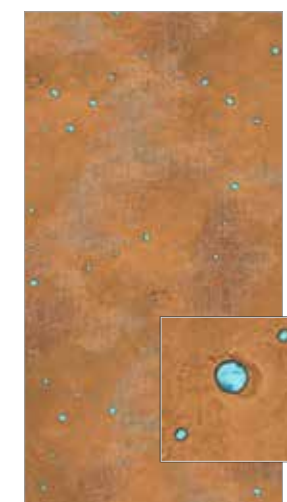
Castle Black



Cu Later



Elemental



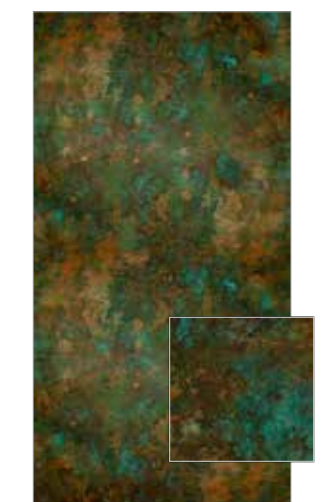
Talisman



Old Stainless



Welcome Back Copper



Wicked

# Frequently Asked Questions (FAQs)

You've got questions? We've got answers. ATI is committed to helping you with your NuMetal project every step of the way. Please contact us if you have any questions or to request more information about NuMetal.

## What is NuMetal?

NuMetal is a collection of High Pressure Laminates with a thin metal surface and phenolic paper backing. These HPLs can be used for interior applications like wallcoverings, wall panels, and ceilings.

## Does ATI stock any commodity-type HPLs?

ATI stocks large quantities of commodity Brushed Stainless Steel and Brushed Aluminum sheets as part of our program.

## What is Phenolic paper backing?

Phenolic paper backing is layers of impregnated Kraft paper bonded together.

## Is phenolic paper backed metal better than unbacked metal?

In many ways, phenolic paper backed metal is superior to unbacked items. The phenolic paper backing helps protect the laminate from being dented and damaged in shipping and fabricating (it does not make the product totally resistant to damage, so the fabricator still needs to take care). Phenolic paper backed metal is also easier on router bits and saw blades, so the fabricator should get more life out of these tools using the phenolic paper backed laminate.

## What is the difference between NuMetal and other similar, competitive metal lines?

The main difference is the choice and variety of items that the NuMetal line offers. Other competitors specialize in standard melamine HPLs, whereas we focus solely on the metal market. The phenolic paper-backed HPLs are all made the same way and fabricated with the same standard tools. There is more of a difference when compared to some of the unbacked metals. A lot of these items do not have a phenolic paper backing. This makes the items a little more difficult to fabricate and a little harder on fabricators' tools.

## How can NuMetal be used in my project?

NuMetal is recommended for all vertical and light-duty horizontal use. Claddings for walls or ceilings, doors or frames,

furniture, light-duty horizontal surfaces, and displays are just a few examples of areas for NuMetal installation.

## How about size and thickness?

Thickness is approximately .035" with the exception of Unique Art and stainless steel, which are .040" thick. Polished aluminum surfaces are anodized. Brushed aluminum and copper surfaces are lacquered. NuMetal sheets are 4' x 8' sheets available in select designs. See pages 32-33 for additional details.

## How is NuMetal fabricated?

NuMetal is fabricated with the same tools used on any high pressure decorative laminate and bonded to the same type of substrates commonly used in the trade. Special care must be taken to avoid denting the surface with tools or scratching the surface with particles of metal. Carbide-tipped blades and bits are recommended. Dull blades will generate heat and scorch metal.

## How can NuMetal be shipped?

NuMetal can be shipped via truck, wooden crates, or rolled for courier shipment, depending on the pattern and size of the order. It is recommended that soon after receipt the NuMetal should be removed from the container and stored flat so excessive roll set does not take place.

## Is there any special treatment required before or after fabrication to ensure longevity of the product?

Anodization produces a hard surface that will not tarnish and has the high abrasion resistance of aluminum. All products are covered with a clear, peel-off mask to protect the finish. This mask should be left on during fabrication to avoid marring the surface.

## Is the lacquer compatible with other systems?

All brushed NuMetal, Copper, and Unique Art laminates are coated with cellulose-based lacquer. This lacquer is compatible with other lacquer systems, which allows for additional finishing if necessary.

## What type of adhesive is recommended?

Any contact cement or cold-set adhesive normally used with decorative laminates is suitable. Avoid adhesive spreading or setup on metallic surface. USE ONLY NAPHTHA OR BENZINE IN ADHESIVE CLEANUP – do not use lacquer solvents or other adhesive solvents, which attack lacquer coatings.

## How should NuMetal be stored?

It is important to store the product flat and not on edge, as storing on edge can cause the sheet to bow after some time. Metal laminates should be stored face up in a cool, dry area and in a completely supported flat position. Use a top sheet of chipboard or similar material to hold stored sheets flat.

## How should NuMetal be cleaned?

Make sure that the cleaning agent used is compatible with either our anodized or lacquered products prior to use. Clean surfaces with a soft cloth using household cleaner - waxes, Windex-type solutions, or ordinary soap and water. Good furniture or automobile waxes provide additional protection for all metal laminate surfaces.

## Are there any precautions to consider when handling the product?

Metal laminates will conduct electricity and can cause shocks or short circuits when in contact with ungrounded electrical circuits. This product is laminated aluminum, copper, or stainless steel of the highest quality and brilliance. Slight surface imperfections are normal. PLEASE INSPECT CAREFULLY PRIOR TO USE to ensure the material is suitable for your needs.

## Is counterbalancing necessary for NuMetal?

Counterbalancing is necessary as with other High Pressure Laminates to prevent warping of the substrate like wallcoverings, wall panels, ceilings and surfaces.

*"ATI Laminates.com was so helpful with installation videos for their products on their website!"*

- Beth Lindell  
Ocala, Florida

Collection	Product Name + Finish	Item Number	Rollable for Shipment
Aluminum	Aluminum Gun Metal	248	•
	Aqua Polished Smoke	1014 AQA	•
	Aqua Rose Gold	212 AQA	•
	Brushed Aluminum Diamond Plate	924 GEK	•
	Brushed Aluminum Fine Hammered	924 HAM	•
	Brushed Aluminum Mesh	944 NTZ	•
	Brushed Aluminum Ridges	924 PGQ	•
	Brushed Aluminum	245	•
	Brushed Brass	934	•
	Brushed Bronze	944	•
	Brushed Stainless Diamond Plate	924 GEK	•
	Brushed Stainless Mesh	256 NTZ	•
	Brushed Stainless Reeds	256 PTK	•
	Brushed Stainless Ridges	256 PGQ	•
	Brushed Stainless	256G	•
	Corrugated Brushed Aluminum	603/924	•
	Corrugated Brushed Stainless Steel	603/256	•
	Diamond Mill Gun Metal	248 DIA	•
	Diamond Polished Smoke	1014 DIA	•
	Diamond Rose Gold	212 DIA	•
	Gun Metal Mill	603/248	•
	Neptune Brushed Aluminum	924 NEP	•
	Neptune Polished Smoke	1014 NEP	•
	Neptune Rose Gold	212 NEP	•
	Polished Aluminum	904	•
	Polished Brass	914	•
	Polished Smoke	1014	•
	Rose Gold	212	•
	Titan Aluminum Gun Metal	248 BKE	•
	Waterfall Aluminum Gun Metal	248 HM5	•
Waterfall Rose Gold	212 HM5	•	
Copper	Matte Copper	C400	•
	Fine Hammered Copper	C471	•
	Hammered Copper	C473	•
Unique Art	Patina Autumn Leaves	C421	•
	Patina Onyx	C412	•
	Madrid	CA5	•
MagneticMetal	Magnetic Brushed Metal	MHA356	•
	Magnetic Black Chalkboard	MH E11MAT	•
	Magnetic White Gloss Dry Erase	MH E11MAT HGL	•
Artful Metals	All Options		

**IMPORTANT DISCLAIMER:** We believe all the information is correct. However, we are not fabricators and are merely passing on information received from fabricators who have worked successfully with NuMetal. It is totally the responsibility of the fabricator to completely test the adhesives and methods of fabrication to insure the results are satisfactory for the fabricator's requirements. We are not responsible for any fabrication costs involved with using NuMetal. See our warranty section on page 32.

Client Satisfaction & Quality for your dollar are the goals we try to achieve.

**When Ordering Please Specify:**

1. Pattern Name and Number
2. Color Name and Number
3. Size and Thickness
4. Type of Installation (i.e.: Wall, column, fixtures, or specify other)

**Technical Specifications**

Please see the Technical Specs on our website at ATILaminates.com/Resources.

**Return Policy**

All shipments are to be inspected within 10 working days after delivery. ATI is to be informed in writing of any potential adjustment necessary. If returned undamaged, return of first-quality stocked items subject to a 20% restock fee.

**Samples**

Due to printer and digital screen limitations, patterns and finishes shown in this catalog may not accurately reflect NuMetal products. Request tangible samples to be verified and approved prior to specification and final application. Samples are available upon request. Be sure to visit us online at ATILaminates.com for the latest designs and finishes.





**Conditions and Warranty**

ATI Decorative Laminates warrants to the original consumer purchaser for one (1) year after date of purchase that, under normal use and service, MirroFlex™, Fusion, NuMetal™, and LumiSplash™ products are free from manufacturing defects and conform to published specifications. This warranty applies as long as the consumer purchaser and/or installer follows ATI's installation instructions (methods), which also includes using recommended adhesives, when adhering ATI's products to recommended surfaces. ATI Decorative Laminates' products are intended for primarily interior applications.

ATI Decorative Laminates believes all information contained herein to be correct. It is the responsibility of the fabricator/customer to completely test the adhesives and methods of fabrication to ensure that the results are satisfactory. The seller's only obligation will be to replace product on a one-to-one basis in the event it is covered under the above warranty. ATI is not responsible for any fabrication, ancillary, or labor costs involved with using its products. Neither the manufacturer nor the seller shall be liable for any additional damage or loss, directly or indirectly, arising as a result of using its products.

Slight imperfections and color variations can occur and are considered normal. Please inspect each product carefully before fabrication to ensure it meets your needs.

## Contact ATI Laminates

-  800.849.1320
-  Text Us at 336.541.2330
-  sales@advtechnology.com
-  ATILaminates.com/NuMetal  
Live Chat feature also available!

## Follow Us on Social







**Design Beyond the Surface**

[ATILaminates.com/NuMetal](http://ATILaminates.com/NuMetal)

800.849.1320