



INSTALLATION INSTRUCTIONS FOR MIRROFLEX CEILING TILES

ATTENTION: MIRROFLEX CEILING TILES MUST BE ACCLIMATIZED FOR 24 HOURS BEFORE INSTALLATION.

DISCLAIMER: PLEASE READ ALL INSTRUCTIONS BEFORE BEGINNING INSTALLATION

The guidelines provided herein have been established in good faith to help prevent installation problems caused by common errors. The manufacturer and/or distributor of the product bears no responsibility for installation actions taken or not taken.

There are many nuances of installation that are assumed to be general construction knowledge to an experienced installer; such nuances are not included in these instructions. Rather, these installation guidelines are strictly recommendations and are not intended to serve as a step-by-step, foolproof installation checklist. Selection of an experienced installer is the sole responsibility of the project owner and architect.

INSPECTION

Please inspect MirroFlex Ceiling Tiles for any imperfections prior to installation; once installed, Tiles may be very difficult to remove.

STORAGE

Tiles should be stored inside in a cool, well-ventilated, dry area on the original shipping pallet. Do not place Tiles on a concrete floor or any other surface that emits moisture. Tiles should be laid flat, not on edge. Tiles should be acclimatized in the area they will be installed for a minimum of 24 hours.

TOOLS REQUIRED

To cut MirroFlex Ceiling Tiles, a fine-tooth saw blade or razor knife is recommended. When fabricating, always cut from the decorated side, never from the back. For installation with adhesive, it is recommended to utilize the trowel with the notch pattern suggested by the adhesive manufacturer, since the trowel used to apply the adhesive can have a great effect on the success or failure of the installation. Spray-on FRP adhesive (Spraylock brand) can also be used, following the manufacturer's directions for use.

MATERIALS REQUIRED

- MirroFlex Ceiling Tiles
- Optional Trim
- Soap, Water, & Damp Cloth for Tile Clean-Up
- Mineral Spirits to Remove Excess Adhesive or Silicone Sealant

GRIDMAX™

GridMax is a patented ceiling grid cover system that fits all 15/16" suspension grid systems. GridMax 4' Mains, 2' & 4' Tees, and 4' Wall Covers are available in most MirroFlex Structures finishes. Please inquire for availability.

100 sqft GridMax kits are available in most Structures finishes and are the preferred method of our inventory.

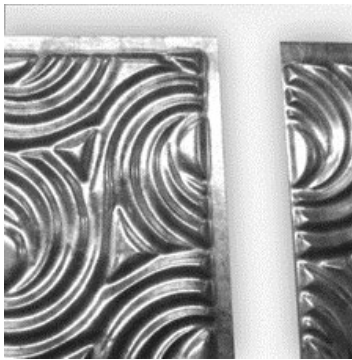


ADHESIVE

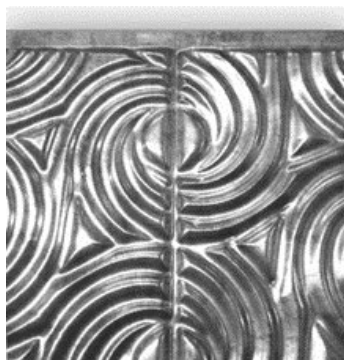
For applications requiring adhesive, suggestions include (*Titebond fast grab FRP*) adhesive or (*Titebond® Advanced Polymer*) *Tile Adhesive* (applied with a notched trowel). Titebond® *Tile Adhesive* should be applied in a crosshatch pattern to the wall, enabling even distribution of substrate.

SEAMS

Many MirroFlex Structures Ceiling Tiles have a BIO (Built-In-Overlap) which is a flat edge on the top and right of each panel, allowing the next panel to overlap and make the seam less visible. Certain MirroFlex patterns that do not have a BIO may have a Bead and Button feature. To install, overlap two or more sheets or tiles on the bead and button perimeter which will join at the pre-determined connection points.



BIO



Bead & Button

INSTALLATION

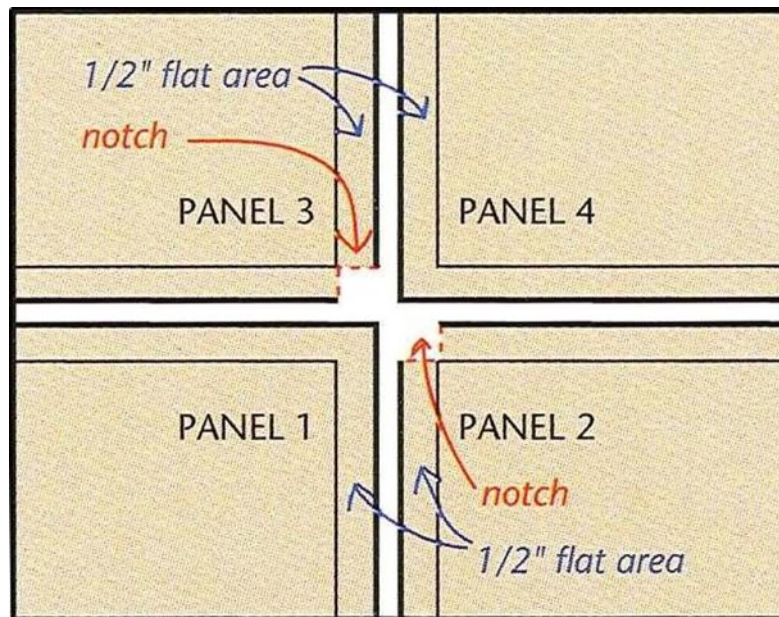
Glue-Up Ceiling Tiles

1. Before starting the installation surface must be dry, smooth, and free from dust, grease, wax, and other particles*.
2. Measure the area to be covered to determine how many tiles you will need. Draw a plan to visualize how the edges and corners will work. When drawing your plan, it is best to center MirroFlex panels on the ceiling leaving equal margins on opposite sides of the room.
3. Now transfer the plan to the ceiling snapping chalk lines to help you keep the tiles aligned.
4. MirroFlex ceiling tiles should be installed from left to right, starting at the farthest point away from the room entrance. Some MirroFlex ceiling tiles are designed with a BIO (Built-In-Overlap) which is a flat edge on the top and right of each panel, allowing the next panel to overlap and make the seam less visible. As you work from left to right you want to make sure that the flat edge is always on the right.
5. When overlapping 4 MirroFlex panels, it is necessary to cut a ½" notch in panel numbers 2 and 3 to avoid an overlap buildup that causes a "bump" (see diagram below).
6. Carefully apply the adhesive to the ceiling (or wall for 2' x 2' wall applications) and lay up your first tile applying pressure as you hold it. (If installing a tile with protective masking, you can remove it at this step of the installation. Make sure the tile is straight before you continue with the next one.
7. Repeat this process, working left to right (and removing the protective masking after installing each panel, if applicable). When finished, use a paint roller on an extension pole to apply additional pressure to the ceiling. Filler strips can be installed around the perimeter of the room if desired.



8. Depending on what type of adhesive is being used, bracing or temporary supports may be required while the adhesive cures.

** The method you choose for cleaning prior to application must be compatible with the surface you are cleaning (e.g. denatured alcohol, degreaser, soap & water, TSP, Greased Lightning, etc.). Check the manufacturer's label directions for instructions on using the product.*



Lay-In Ceiling Tiles

1. Count how many tiles you will need for the installation. For panels that need to be trimmed, use the mineral tile as a template and using your marker and utility knife (razor, scissors, etc.) score the MirroFlex tile to size and then snap the pieces apart. Some 2' x 2' and 2' x 4' sizes might produce sag and require a small amount of panel adhesive in the center to adhere to an existing mineral fiber tile. We also recommend installing under existing mineral fiber tiles to increase sound absorption and to avoid discarding large quantities of tiles.
2. ATI also offers an easy-to-install, hold-down clip system to help support lay-in ceiling tiles, attaching to the top of any existing grid to hold the tiles (low or high profile) in place. This will prevent the tiles from flipping out of place from air leaks and create a smooth visual. This clip system is only necessary if there are no existing tiles in place to support the new MirroFlex lay-in tiles.
3. Install the Grid Max covers to the t-bar suspension grid to allow for a seamless look on your ceiling. Be sure to install all the 4' **Main** covers first and then install the 2' or 4' **Tee** covers. The **Main** covers already come with sections notched out where the **Tee** grid crosses under it.
4. After all the covers are in place, begin to install all the panels into the suspension grid.
5. If your ceiling needs a place for recessed lighting, be sure to cut out an opening on the tile where the lamp will be attached.

COMPLETING TILE INSTALLATION

- Remove any residue left by adhesive as recommended by manufacturer.
- Clean Tiles thoroughly prior to leaving jobsite.



Painting Guide

If a custom color is desired, choose our standard MirroFlex Gloss White Paintable or EccoFlex Tan Paintable finish or inquire about our custom color matching program. Use recommended paints in accordance with manufacturer's recommendations. Due to the high chemical resistance of it, only certain paints adhere well. It is very important to use recommended paints to paint MirroFlex Gloss White Paintable and EccoFlex Tan Paintable sheets.

The following paints have been tested and are recommended:

MirroFlex Paintable Painting Guide			
Vendor	Product	Prep 1	Prep 2
Sherwin Williams	Acrolon 218HS	SSPC-SP1 Solvent Cleaner	DTM Bonding Primer
Lowes	Signature Interior or American Tradition Exterior Duramax Paints	TSP Cleaner	Plastic Primer Spray
Benjamin Moore	Benjamin Moore Latex or Oil Paint	TSP Cleaner	Fresh Start Primer
Pratt & Lambert	Pratt&Lambert Latex Paint	Scuff Sanding/TSP Cleaner	Supreme Interior / Exterior Multi Purpose Primer

EccoFlex Paintable Painting Guide			
Vendor	Product	Prep 1	Type
Sherwin Williams	SuperPaint® or Duration™ or similar	Wiping the sheet with Isopropyl Alcohol (IPA) will help promote paint adhesion. To prepare the surface: EccoFlex sheet surface can be wiped using IPA or rubbing alcohol prior to painting. This method of treatment helps paint attack the surface and create a strong bond to the EccoFlex sheet.	Brush application
Sherwin Williams	Polane™ Series* or Similar		Spray application
Cardinal	Polyurethane 6400 Series		Spray application

* For external applications using Sherwin-Williams Polane Series, use exterior catalyst V66V27. The ratio is 6 parts paint, one part catalyst.

Installation Videos

MirroFlex Ceiling Tile Installation Videos can be found on our website at

www.atilaminates.com/resources/video

Conditions & Warranty

Visit us online at <https://atilaminates.com/> for the latest patterns, finishes and installation videos. Click on "Resources" tab for the latest catalog and warranty information.