

Fusion Textured Aluminum

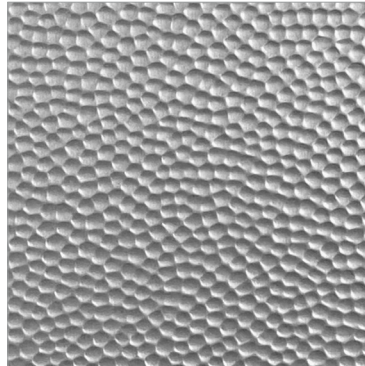
Fusion Textured Aluminum is an unbacked, 4' x 8' substrate with texture, adding depth and feel to the printed artwork. It is easy-to-install, no counterbalancing required, and suitable for a variety of interior applications, including: wall panels, divider panels, and displays.

By combining Artful Metals imagery with Fusion Textured Aluminum, you can create an engaging, custom design on a durable, scratch-resistant surface – perfect for any space. Using our proprietary Fusion dye-sublimation process, the image is embedded into the substrate, allowing the texture to come to life.

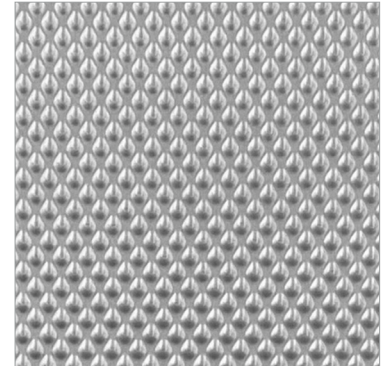
From concept to completion, your imagination is the limit. For more information on solutions available from ATI Decorative Laminates, please call 800.849.1320.

Features

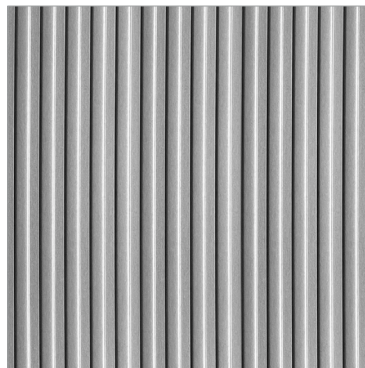
-  Textured Surface
-  No Counterbalancing Required
-  Can Adhere Directly to Most Substrates, Including Drywall
-  Can be Bent or Curved
-  High Impact + Abrasion Resistant
-  Chemical Resistant
-  Stain Resistant
-  Custom or Stock Imagery
-  Interior Applications



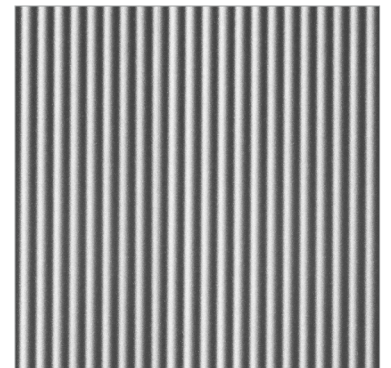
Bulletproof



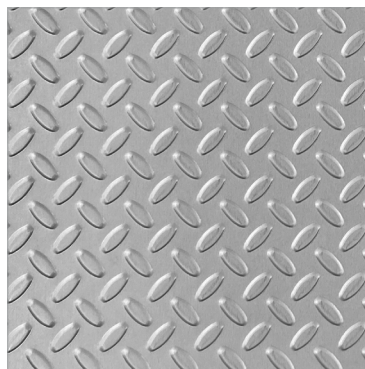
Drogo



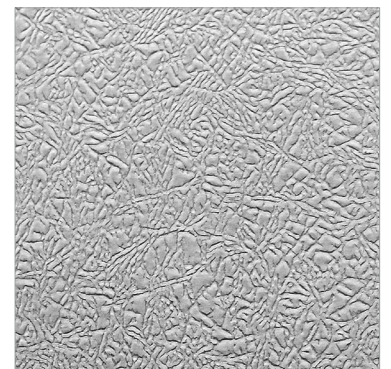
Forge



Infinite



Moto X



Parchment

Fusion Artful Metals

COLLECTION

The **Artful Metals Collection** contains 19 unique, metal options that range from bright colorful patinas, rich oxidized coppers, and rare and artistic, modern-treated metals. Artful Metals are available on 4' x 8' sheets of ATI's Fusion Textured Aluminum and smooth Mill Satin Aluminum substrates.



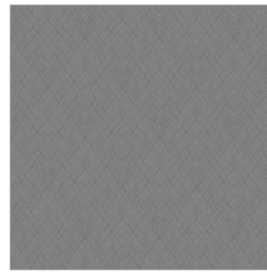
Arctic



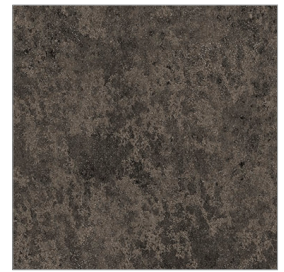
Black Sands



Bourbon Streak



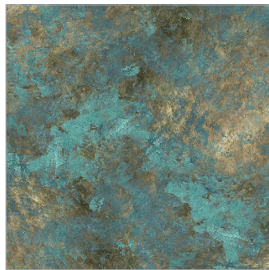
Carats



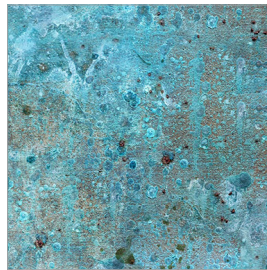
Castle Black



Cu Later



Elemental



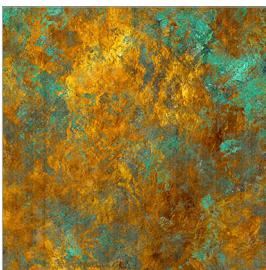
Funky Cold Patina



Gatsby



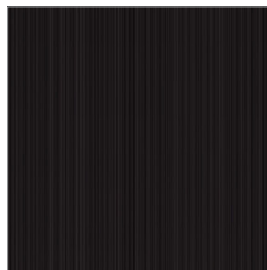
Industrial Steel



Native Patina



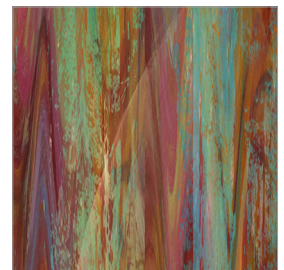
Old Stainless



Raven



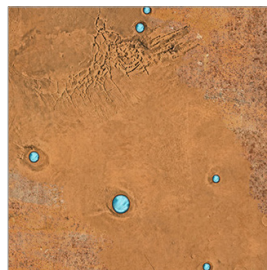
Red Rust



So Impressed



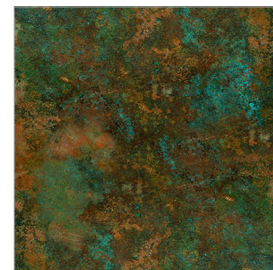
Sunburst



Talisman



Welcome Back Copper



Wicked