



## MirroFlex™ Structures – Wall Panels and Wainscoting Fabrication and Installation Instructions

MirroFlex™ Structures are deeply textured laminates used for wall panels. These opaque, thermoplastic panels have high-impact resistance and are available in a wide variety of patterns and finishes.

### **General**

Sizes - 4' x 8' x .030" (1220 x 2440 x .75 mm) and 4' x 10' x .030" (1220 x 3048 x .75 mm); 18" x 24" Backsplash tiles; and 30"-32" x 48" Wainscot tiles.

MirroFlex™ Structures ship with a clear protective film or with TuffCote™, a revolutionary scratch-resistant protective shield, which is added to some MirroFlex and MirroFlex Structures finishes.

### **Storing**

Store flat and acclimatize in the same environment for at least 24 hours before fabrication.

### **Cutting/Fabricating**

MirroFlex™ Structures can easily be cut to size with razor knife and scissors, saw blades, and drilling tools for thermoplastics. When fabricating MirroFlex™, always cut from the decorated side, through the finish. Never cut from the back. If routing, always use a down spiral bit.

### **Cleaning and Care**

Clean only with warm soapy water or a typical window cleaner. Never use abrasive cleaners.

### **CAUTION:**

All MirroFlex sheets being applied to surfaces with any recommended adhesive systems must be acclimatized.

- All components to be joined must be acclimatized for 24 hours prior to installation.
- Installation between 65° F and 80° F and humidity of 80% or less is necessary.
- For every 4-foot wide sheet an expansion space of 1/32" (8-foot sheet = 1/16") is necessary.

### **Lamination**

Like HPL, Structures sheets can be bonded with contact adhesive, but you must use a product compatible with PVC and the surface you are adhering to. We recommend water-based contact adhesives only.



### **Adhesives**

Trowel on latex adhesives are recommended for adhering MirroFlex sheets for wall applications. Brush-on or roller-on types, non-flammable, and water-based contact adhesives which are suitable for PVC, can also work well.

The following is meant as a guideline for adhesives that have been tested, and work well with MirroFlex product:

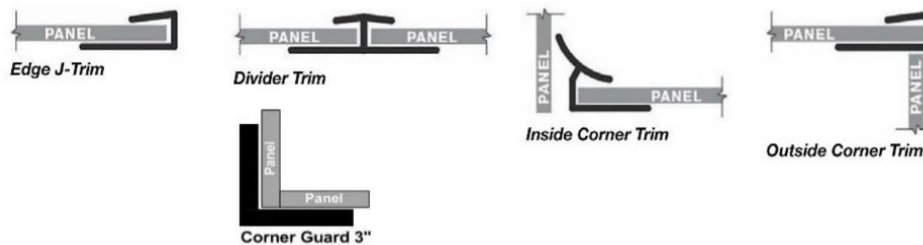
- Titebond® Fast Grab FRP
- Loctite® PL Premium
- Loctite® PL Premium Fast Grab
- DAP® Weldwood FRP
- 3M™ 77 (spray on aerosol)

### **Cold Press Adhesives**

MirroFlex Structure sheets may be laminated in a cold press using Wilsonart® 3310 adhesive or similar. Pressure must be adjusted to the lowest amount that will produce an acceptable bond so that formed pattern will not be damaged. Pressure needed will vary with each structure pattern.

### **Trims and Seams**

Trims are available to join and finish Structures sheets. Most MirroFlex Structures wall panels come with a BIO, Built-In-Overlap) which is a flat edge on the top and right of each panel, allowing the next panel to overlap and make the seam less visible. Inside corners, outside corners, edge trim, and universal trim strips are shown below. Some have a Bead-and-Button seaming edge, while some have neither, these are simply butt joined or seamed with a divider strip.



***Trims available in 4' or 8' lengths.***

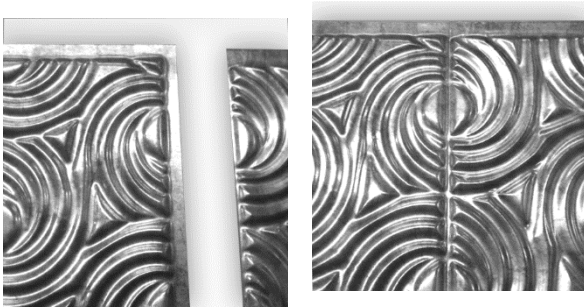
### **Installations**

#### **4' x 8', 4' x 10' Wall Panels, and Wainscoting**

1. Before starting the installation, surface must be dry, smooth and free from dust, grease, wax, and other particles.\*
2. Measure the area to be covered to determine how many panels you will need.
3. All trowel on FRP adhesives will have to be applied to the wall and not to the back of the panels.



- Most MirroFlex Wall Panels are designed with a BIO (Built-In-Overlap), which is a flat edge on the top and right of each panel, allowing the next panel to overlap and make the seam less visible. Install panels from left to right, being sure the flat edge is always on the right. Certain MirroFlex patterns that do not have a BIO may have a Bead and Button feature. To install, overlap two or more sheets or tiles on the bead and button perimeter which will join at the pre-determined connection points. Some patterns have neither and are simply butt joined or seamed with a divider strip



BIO



Bead + Button

- After applying your selected adhesive to the wall, lay up your first panel applying even pressure to ensure the entire panel is in contact with the adhesive. Once the panel is fully adhered to the wall, gently remove the protective masking (if your panel came with it) as you hold it firmly against the wall. Make sure the panel is straight before you continue with the next one.
- Repeat this process, working left to right. When finished, use the paint roller on an extension pole to apply additional pressure to the wall.

*\* The method you choose for cleaning prior to application must be compatible with the surface you are cleaning (e.g. denatured alcohol, degreaser, soap & water, TSP, Greased Lightning, etc.). Check the manufacturer's label directions for instructions on using the product.*

### **Outlet Covers**

Some outlet covers (simple, inexpensive) can be covered with matching covers. To do this, peel the backing off of the outlet cover piece and lay flat, placing the sticky side up. Place the outlet cover centered and face down on the adhesive sheet. Using a utility knife, cut a square away from each corner. Fold the edge of the adhesive sheet over the outlet cover to create a seamless finish. Turn the cover over, and use a utility knife to carefully cut away the outlet openings.

### **Painting Guide**

If a custom color is desired, choose our standard MirroFlex Gloss White Paintable or EccoFlex Tan Paintable finish or inquire about our custom color matching program. Use recommended paints in accordance with manufacturer's recommendations. Due to the high chemical resistance of it, only certain paints adhere well. It is very important to use recommended paints to paint MirroFlex Gloss White Paintable and EccoFlex Tan Paintable sheets.



The following paints have been tested and are recommended:



MirroFlex Paintable Painting Guide			
Vendor	Product	Prep 1	Prep 2
Sherwin Williams	Acrolon 218HS	SSPC-SP1Solvent Cleaner	DTM Bonding Primer
Lowes	Signature Interior or American Tradition Exterior Duramax Paints	TSP Cleaner	Plastic Primer Spray
Benjamin Moore	Benjamin Moore Latex or Oil Paint	TSP Cleaner	Fresh Start Primer
Pratt & Lambert	Pratt&Lambert Latex Paint	Scuff Sanding/TSP Cleaner	Supreme Interior / Exterior Multi Purpose Primer

EccoFlex Paintable Painting Guide			
Vendor	Product	Prep 1	Type
Sherwin Williams	SuperPaint® or Duration™ or similar	Wiping the sheet with Isopropyl Alcohol (IPA) will help promote paint adhesion.	Brush application
Sherwin Williams	Polane™ Series* or Similar	To prepare the surface: EccoFlex sheet surface can be wiped using IPA or rubbing alcohol prior to painting. This method of treatment helps paint attack the surface and create a strong bond to the EccoFlex sheet.	Spray application
Cardinal	Polyurethane 6400 Series		Spray application

\* For external applications using Sherwin-Williams Polane Series, use exterior catalyst V66V27. The ratio is 6 parts paint, one part catalyst.

**Installation Videos**

MirroFlex Structures Installation Videos can be found on our website at [www.atilaminates.com/resources/video](http://www.atilaminates.com/resources/video)

**Conditions & Warranty**

ATI Decorative Laminates warrants to the original consumer purchaser for one (1) year after date of purchase that, under normal use and service, MirroFlex products are free from manufacturing defects and conform to published specifications. MirroFlex products are intended for primarily interior applications.



ATI Decorative Laminates believes all information contained herein to be correct. It is the responsibility of the fabricator/customer to completely test the adhesives and methods of fabrication to ensure that the results are satisfactory.

The seller's only obligation will be to replace product on a one-to-one basis. Neither the manufacturer nor the seller shall be liable for any additional damage or loss, directly or indirectly, arising as a result of using its products.

Slight imperfections and color variations can occur and are considered normal. Please inspect each product carefully before fabrication to ensure it meets your needs. ATI is not responsible for any fabrication or ancillary costs involved with using its products.

Visit us online at [ATILaminates.com/MirroFlex](http://ATILaminates.com/MirroFlex) for the latest additions to MirroFlex.