



# NUMETAL<sup>TM</sup>

---

High Pressure Laminates with  
a Real Metal Surface

---

Commercial  
Healthcare + Institutional  
Hospitality  
Retail



## Design Beyond the Surface

ATI Decorative Laminates is a leading manufacturer of decorative surfacing solutions. Headquartered in Greensboro, NC since 1979, ATI provides solutions for the hospitality, healthcare and institutional, retail, commercial, and residential markets. Through our commitment to continuous improvement and our strong company values, our goal is to provide superior decorative products, quality customer service, and foster long-lasting relationships.

ATI products can be specified under the following CSI divisions:

- 074200 – Fusion Unbacked Aluminum Sheets
- 097800 – NuMetal High Pressure Laminates and Fusion Unbacked Aluminum Sheets
- 123600 – NuMetal High Pressure Laminates

### ATI Decorative Laminates

6106 West Market Street | Greensboro, NC 27409  
800.849.1320 | 336.668.0488 | Fax: 336.668.0713 | ATILaminates.com

ISO 9001:2015 Certified | ISO 14001:2015 Certified | HUB (Historically Underutilized Business) Certified



THE FORMULA

BRUSHED STAINLESS RIDGES - 256 PGQ



# Contents

Design Beyond the Surface	
What is NuMetal™?	4
Why Choose NuMetal?	6
NuMetal Collection	
A Variety of Real Metal Surfaces	10
Aluminum Collection	12
Copper Collection	16
Unique Art Collection	17
Special Order Items	18
Case Studies	
Airstream	20
Green Valley Grill	22
Koury Corporation	24
Sustainability	26
Artful Metals Collection	
Unbacked Specialty Metals	30
Designs	32
FAQs	34
Quick Reference Guide	36
How to Order	38



THE FORMULA  
BRUSHED ALUMINUM MESH - 924 NTZ  
FRONT + BACK COVER - TITAN ALUMINUM GUN METAL - 248 BKE





THE FORMULA

AQUA POLISHED SMOKE - 1014 AQA



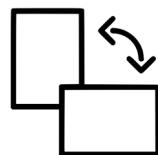
# Design Beyond the Surface



Real Metal Surfaces



Embossing, Etching,  
and Hand Painting



Suitable for a Variety  
of Applications



Durable Surfaces



High Quality Designs



Variety of Options  
Stocked In-House

## What is NuMetal?

NuMetal is a collection of HPLs (High Pressure Laminates) with a real metal surface and phenolic paper backing. NuMetal sheets are usually 4' x 8' sheets (4' x 10' available on special order) in Aluminum or Copper; featuring embossing, hand painting, etching, and other innovative techniques to enhance the look of metals. High quality design solutions are its trademark. NuMetal is suitable for vertical and light-duty horizontal applications including wall panels, backsplashes, countertops, accent walls, store fixtures, point-of-purchase (POP) displays, and more.

The majority of ATI's products are created for commercial spaces where durability of design reigns supreme. As experts in surfaces that remain abrasion resistant, in addition to performance, NuMetal products meet safety and material standards. ATI distributes NuMetal to hospitality, healthcare and institutional, retail, and commercial design markets.

## Look for The Formula Design + Finish = NuMetal



Items Shown as Concept (If Applicable)

### THE FORMULA

WATERFALL ROSE GOLD - 212 HM5

(Pictured Right)

Product Name  
(Design + Finish)

Product Number





# Design Beyond the Surface

## Features

- Real Metal Surfaces 
- Embossing, Etching, and Hand Painting Techniques 
- Suitable for a Variety of Applications 
- Counterbalancing Required for HPLs 
- Abrasion Resistant 
- Easy to Clean Surface 
- Class A Fire Rated Options Available 
- Protective Coat Added to Most NuMetal Products 

## Why Choose NuMetal? Solving Your Design Needs

- 1. HPLs (High Pressure Laminates) with Real Metal Surfaces**  
Available in real aluminum and copper surfaces with a phenolic paper backing. Like other HPLs, counterbalancing is required to prevent warping of the substrate.
- 2. High Quality, Handmade Designs**  
NuMetal offers design flexibility and is available as flat sheets or with a combination of embossed designs and a finish. The items shown on pages 12-17 are available in 4' x 8' and stocked. We have special order requirements for 4' x 10' size.
- 3. Suitable for a Variety of Applications**  
NuMetal is suitable for a variety of vertical and light-duty horizontal applications including wall panels, backsplashes, countertops, accent walls, store fixtures, point-of-purchase (POP) displays, and more.
- 4. Protective Coating for Durable Surfaces**  
Most NuMetal products are coated with a lacquer to ensure durability and abrasion resistance. Polished finishes are anodized and will not tarnish. All NuMetal products are also covered with a clear peel off masking to protect the finish. This masking should be left on during fabrication to avoid damaging the surface.
- 5. Special Order Items**  
Many other design and finish combinations are available for special order. See pages 18-19 for special order instructions and be sure to contact your ATI Customer Service Representative at 800.849.1320 for more information.
- 6. Eco-Friendly Options Available**  
NuMetal is made from pre-consumer materials that are phenol-free and CO2 neutral. The core is made of 100% biological secondary components obtained from renewable resources and is fully recyclable.
- 7. Low Minimum Order Quantities**  
Whether you need one sheet for a finishing touch or 100 for your project, we've got you covered. Stocked items are ready to ship within 1-2 weeks.
- 8. Shipped to You from an ISO Certified Facility**  
ATI is ISO Certified which enables us to have the "hands on" control necessary to maintain the high standards customers expect from us. Your NuMetal sheets will be thoroughly inspected by our Quality Control Team before we ship your order.





# NUMETAL COLLECTION

Aluminum  
Copper  
Unique Art  
Special Order Items



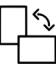







THE FORMULA  
BRUSHED ALUMINUM - 245



# NuMetal Collection

## Features

- Real Metal Surfaces 
- Embossing, Etching, and Hand Painting Techniques 
- Suitable for a Variety of Applications 
- Counterbalancing Required for HPLs 
- Abrasion Resistant 
- Easy to Clean Surface 
- Class A Fire Rated Options Available 
- Protective Coat Added to Most NuMetal Products 

## Choose from a Variety of Real Metal Surfaces

With dozens of options to choose from, NuMetal is the perfect high-end solution for your application that can be used as wall panels, backsplashes, countertops, accent walls, point-of-purchase (POP) displays, store fixtures, and more. We can help you find which one is best for your project!

### Aluminum Collection

All Aluminum finishes are available in flat sheets or with embossed designs added. Most finishes are lacquered for abrasion resistance. The polished finishes are anodized.

### Copper Collection

Copper laminates, with selected popular embossed designs, are lacquered and come with clear protective film for ease in processing.

### Unique Art Collection

As their name implies, the Unique Art Collection is truly a unique work-of-art that offers rich colors and materials in their design. They are hand painted by artists using techniques that allow for repeatability. The artistic value and nuances of hand painting are evident when using multiple sheets. As a result, it should be noted that slight differences will be seen from sheet to sheet. Protected with a high-quality lacquer process to ensure durability, these laminates can be used in both low- and high-traffic areas.

NuMetal offers design flexibility and is available as flat sheets or with a combination of embossed designs and a finish. The items shown on the following pages are stocked in-house. However, many other combinations are available for special order.



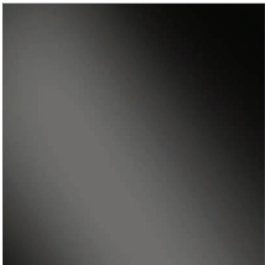


# Aluminum

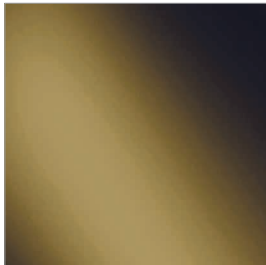
All Aluminum finishes are available in flat sheets or with embossed designs added to the finish. Most finishes are lacquered for abrasion resistance. The polished finishes are anodized and will not tarnish.



Polished Aluminum  
904



Polished Smoke  
1014



Polished Brass  
914



Rose Gold  
212



Brushed Aluminum  
245



Brushed Stainless  
256G



Brushed Bronze  
944



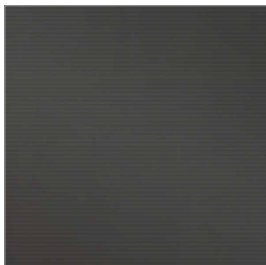
Brushed Brass  
934



Aluminum Mill  
204



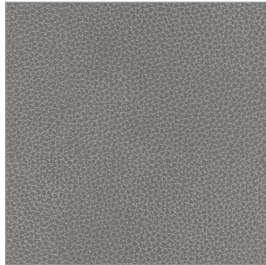
Aluminum Gun Metal  
248



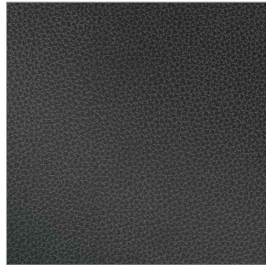
Gun Metal Mill  
603/248



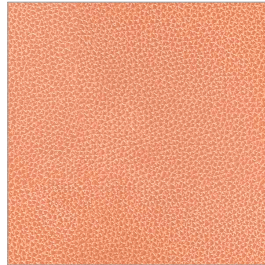
Brushed Aluminum  
Fine Hammered  
924 HAM



Neptune Brushed  
Aluminum  
924 NEP



Neptune Polished  
Smoke  
1014 NEP



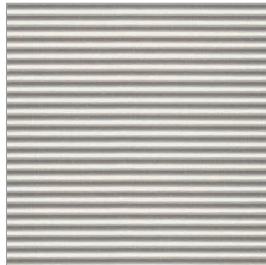
Neptune Rose Gold  
212 NEP



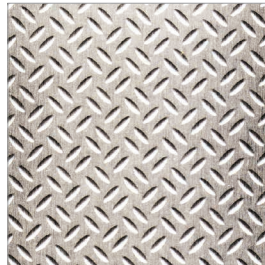
Corrugated Brushed  
Aluminum  
603/924



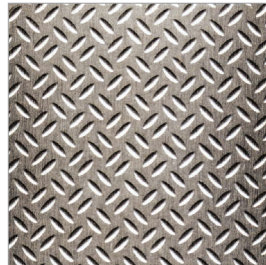
Corrugated Brushed  
Stainless Steel  
603/256



Corrugated  
Mill Aluminum  
603/209



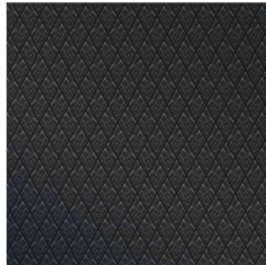
Brushed Aluminum  
Diamond Plate  
924 GEK



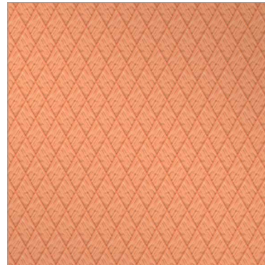
Brushed Stainless  
Diamond Plate  
256 GEK



Diamond Mill  
Gun Metal  
248 DIA



Diamond Polished  
Smoke  
1014 DIA



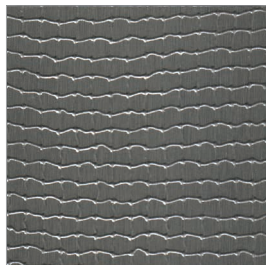
Diamond Rose Gold  
212 DIA



Titan Aluminum  
Gun Metal  
248 BKE



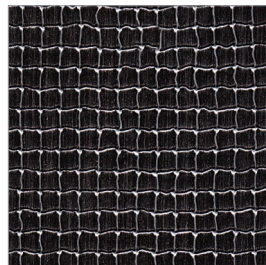
Brushed Aluminum  
Mesh  
924 NTZ



Brushed Stainless  
Mesh  
256 NTZ



Black Mesh  
11 NTZ



Antique Pewter  
Mesh  
490 NTZ



# Aluminum

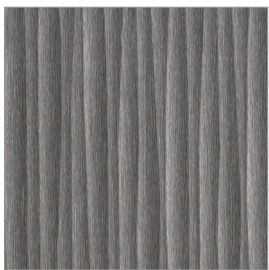
View the entire NuMetal Collection and Order Samples at [ATILaminates.com/NuMetal](http://ATILaminates.com/NuMetal) 



Brushed Aluminum  
Ridges  
924 PGQ



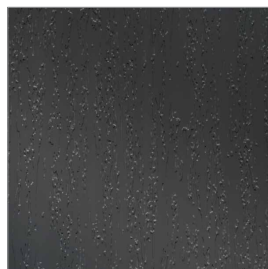
Brushed Stainless  
Ridges  
256 PGQ



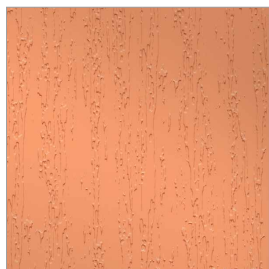
Brushed Stainless  
Reeds  
256 PTK



Antique Pewter  
Reeds  
490 PTK



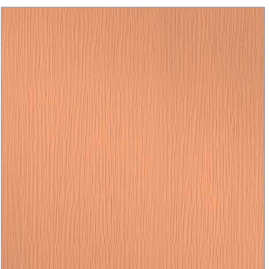
Aqua Polished Smoke  
1014 AQA



Aqua Rose Gold  
212 AQA



Waterfall Aluminum  
Gun Metal  
248 HM5



Waterfall Rose Gold  
212 HM5



Aluminum Rondo  
202 RON

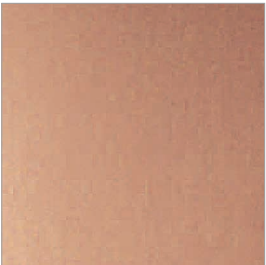


  
THE FORMULA  
ROSE GOLD - 212



# Copper & Unique Art

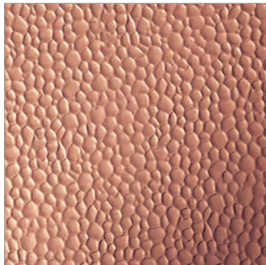
Copper laminates, with selected popular embossed designs, are lacquered and come with clear protective film for ease in processing. Available as flat sheets or with embossed designs.



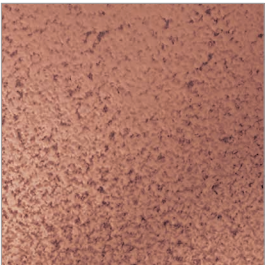
Matte Copper  
C400



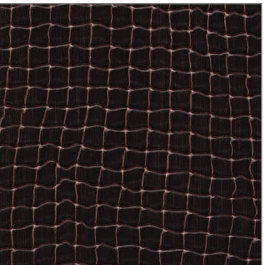
Fine Hammered  
Copper  
C471



Hammered Copper  
C473



Antique Fine  
Hammered Copper  
C462



Antique Copper  
Mesh  
401 NTZ

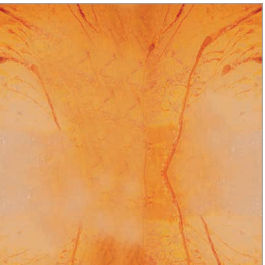


Antique Copper  
Ore  
C431

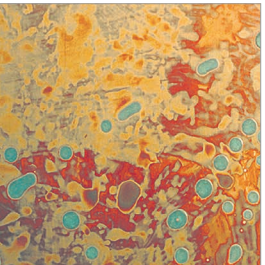
The Unique Art Collection offers rich colors, hand painting techniques, and materials in their design. As a result, slight differences will be seen from sheet to sheet. Protected with a high-quality lacquer to ensure durability.



Patina Autumn  
Leaves  
C421



Patina Onyx  
C412



Patina Malchit  
C414



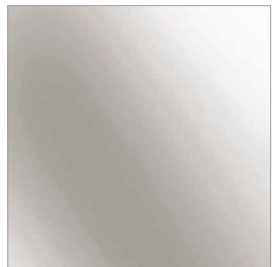
Madrid  
CA5



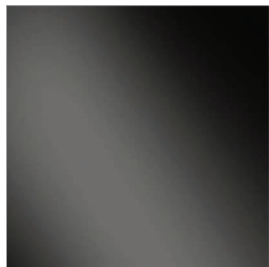
# Special Order Items

ATI stocks a large variety of NuMetal products in-house. Many other design and finish combinations are available for special order. Special orders require a 10-15 sheet minimum. Want to choose your own Formula? Create your own NuMetal Formula in just 3 easy steps (shown below).

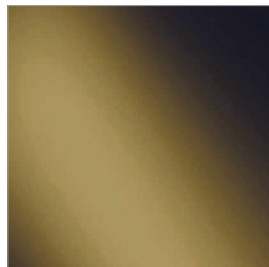
## 1 Step 1: Choose a finish.



Polished Aluminum  
904



Polished Smoke  
1014



Polished Brass  
914



Rose Gold  
212



Brushed Aluminum  
245



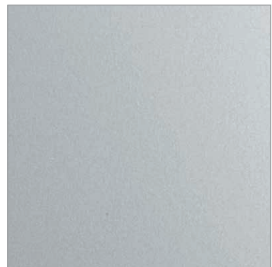
Brushed Stainless  
256G



Brushed Bronze  
944



Brushed Brass  
934

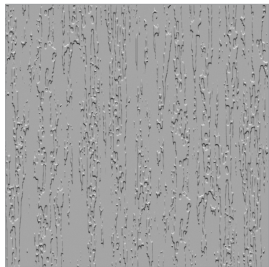


Aluminum Mill  
204

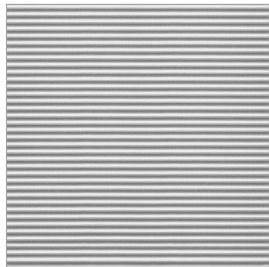


Aluminum Gun Metal  
248

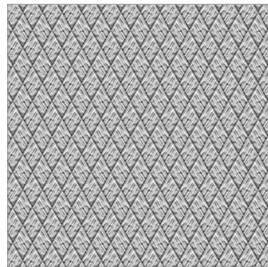
## 2 Step 2: Choose an embossed design.



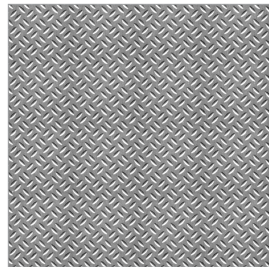
Aqua <sup>1</sup>  
AQA



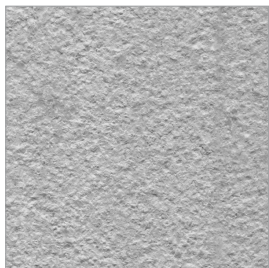
Corrugated  
603



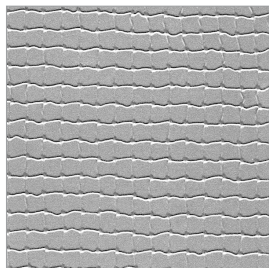
Diamond  
DIA



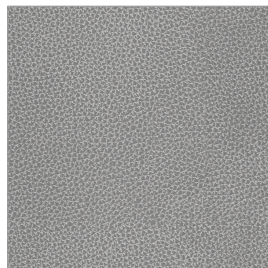
Diamond Plate  
GEK



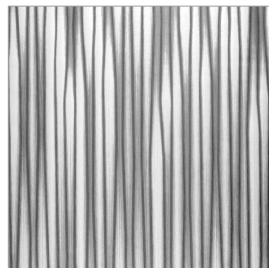
Fine Hammered  
HAM



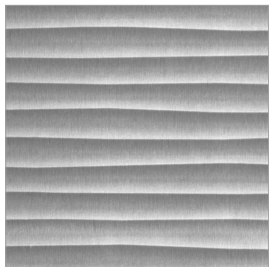
Mesh  
NTZ



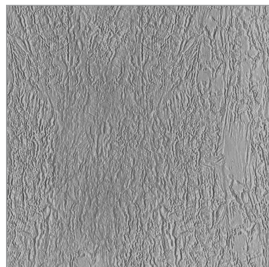
Neptune  
NEP



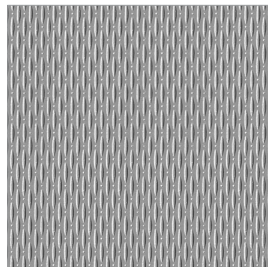
Reeds  
PTK



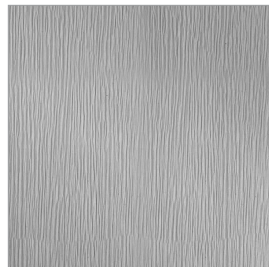
Ridges  
PGQ



Titan <sup>2</sup>  
BKE



Waffle  
WAF



Waterfall  
HMS

1 Aqua is only available in Polished finishes

2 Titan is only available in Brushed and Mill finishes

## 3 Step 3: Contact an ATI Customer Service Representative to place your order. Be sure to inquire about additional finishes and designs that may be available for special order.



Phone: 800.849.1320 • Email: [info@advtechnology.com](mailto:info@advtechnology.com)





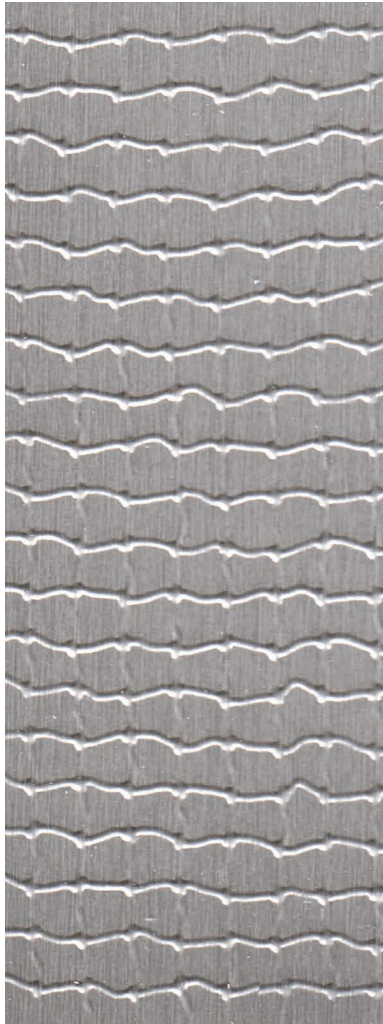
Airstream

CHALLENGE

PROVIDE A LOW MAINTENANCE SURFACE THAT FITS WITH THE STYLE OF AN ICONIC AMERICAN BRAND.

THE FORMULA

BRUSHED ALUMINUM MESH - 924 NTZ



BRUSHED ALUMINUM MESH  
924 NTZ

THE DETAILS

64 SQ FEET

In Every "Classic 2015, 2016, & 2017" Trailer

3,200 SQ FEET  
of Material Per Month

85,000+ SQ FEET  
Specified to Date

BACKGROUND

In 1929, Wally Byam set out to build a sleek, light-weight travel trailer with all the commodities of home. Some 85 years later, his iconic Airstream trailer remains a symbol of American adventure and discovery.

ATI has worked with Airstream and its team of designers on several occasions, with the company specifying Aluminum Mill 204 sheets in its 2014 Sterling trailer.

CHALLENGE

The year 2015 marked a significant remodel of Airstream's flagship product, the Classic trailer, where they once again called on ATI for interior surface solutions because, as one designer put it, "We know they do some pretty cool things."

SOLUTION

In keeping with Airstream's commitment to light-weight design, they selected the Brushed Aluminum Mesh 924 NTZ as the galley kitchen's backsplash and divider wall. Aluminum laminate is a perfect match because of its flexibility and ease of use. Airstream previously used Aluminum Mill 204 as the finishing laminate for the kitchen divider walls.

ATI's level of service, brand equity and product integrity, as well as their reliability, are just some of the reasons Airstream continues to call upon the family-owned laminate manufacturer, based in Greensboro, NC.

Just like the Classic, NuMetal is designed for long-term adventures.







# Green Valley Grill

**CHALLENGE**  
MAKING A MODERN RESTAURANT FEEL  
LIKE IT WAS BUILT IN 1920.

**THE FORMULA**  
ANTIQUÉ FINE HAMMERED COPPER - C462

**THE DETAILS**

**DESIGNERS**  
Don Rives and  
Dennis Quaintance

**PRODUCTS**  
NuMetal Antique  
Fine Hammered Copper  
C462 and Antique  
Copper Ore C431

**INSTALLATION YEAR**  
1998



ANTIQUÉ COPPER ORE - C431

**BACKGROUND**

In the heart of Greensboro, North Carolina, lies a pearl of a hotel known as the O. Henry, and its equally charming restaurant, the Green Valley Grill. Unless you're a local, you would never guess that this charming and luxuriously accommodating hotel and restaurant is only 20 years old. One would think that both structures have been standing in this location for more than 100 years. But according to CEO Dennis Quaintance, that is not the case.

In 1998, Quaintance was directly involved in the design of Green Valley Grill along with his late colleague, Don Rives. They wanted the restaurant design to echo warmth and welcome. "We wanted to leave the impression that you are not dining in something new, but rather something ancient," said Quaintance about the initial design concepts. "There is something, a psychological effect, kind of like going home. It's a safe space; it's a comfort place." They went with brick and copper as their staple materials because they felt that, "brick and copper are things that people have lived next to for quite a while."

**CHALLENGE**

Originally, Quaintance and Rives wanted the hotel to look like it was built in 1870 and the restaurant to feel like a 1920s addition. What many folks don't know is that both structures were actually constructed in 1998. When this design duo decided on copper, Quaintance contacted his friends at ATI Decorative Laminates because he was sure if anyone knew laminates and copper, it would be Jim Burgio, ATI's CEO.

"We went with laminate because it's so durable. It's been 20 years since installation and it's held up great," said Quaintance. "And I'll bet you dollars-to-donuts if you came back in 20 years you'll see these exact same walls. Because materials either wear out or ugly out, and this isn't going to do either one."

**SOLUTION**

Both copper and brick have endured for ages, and those materials helped the design team achieve a historic mood. They applied ATI's Antique Copper Ore C431 in a portion of the restaurant informally referred to as "the Copper Room," and wrapped their large bar with Antique Fine Hammered Copper C462. Both materials are from the NuMetal Copper Collection, which gives the space old-world charm with the durability of modern materials.

Originally, the Copper Room's installation did not have metal joiners, but a couple of years after the restaurant's opening there were humidity problems with the restaurant's HVAC system, which made Quaintance and his team slightly alter the design to address the effects of moisture. "We came in and put in these, what we call joint lines. But that was all retrofit, we didn't have to change anything to do it," said Quaintance. Because of the copper laminate's durability, they had the same laminates that wrap the bar (Antique Fine Hammered Copper C462) installed throughout the restaurant's large kitchen area.





# Koury Corporation

CHALLENGE  
CREATE SOMETHING WITH CHARACTER  
IN A LIMITED AMOUNT OF SPACE.

THE FORMULA  
UNIQUE ART PATINA ONYX - C412

## BACKGROUND

The Koury Corporation, one of the largest, privately owned, builder/developer companies located in Greensboro, NC, recently relocated their headquarters and decided to give their lobby a fresh new look. They turned to ATI Decorative Laminates’ NuMetal product line for their product of choice.

The reason? Several, actually. As Koury Corporation’s interior designer Susan Boswell stated, “When Koury Corporation relocated their offices, they wanted to modernize their look.” So, Boswell went with ATI’s NuMetal line of hand-painted copper laminates. She selected NuMetal Patina Onyx C412 to beautifully wrap the lobby’s reception desk.

## CHALLENGE

“Because Koury is a construction company, we wanted to use materials that showcased craftsmanship, but needed the product to be easy to install as well,” said Boswell of her choice in material and design.

Boswell faced the challenge of limited space for this reception desk, so the curved desk is not only smartly designed, but it also looks great and adds character to the space. NuMetal can easily wrap around curved surfaces and columns, making it a perfect candidate for this installation. Boswell used NuMetal Patina Onyx C412 from the Unique Art collection to create a simple desk, but one that feels and looks like a work of art.

## SOLUTION

“It took about 2 to 3 weeks from the time we decided on the material, the POs, receiving it and later installing it,” said Boswell.

The product has been installed for over 2 months now and Boswell boasted that they have had no issues with durability.

When asked if there was anything that ATI could have done better, Boswell couldn’t think of a thing. She loves working with ATI’s Southern Regional Sales Manger, Lee Averett. Boswell beamed at the question saying, “Lee was great to work with. He brought many samples for us to look at and choose from. We always get the best service!”

## THE DETAILS

DESIGNER  
Susan Boswell

SALES REP  
Lee Averett

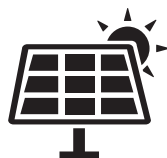


UNIQUE ART PATINA ONYX - C412





# Sustainability



2015 Solar  
Manufacturing  
Offset Initiative

ISO

9001:2015 &  
14001:2015  
Certified

LEED

Credits Available

As an ISO 9001:2015 certified company, we are committed to continual improvement through our life-cycle approach to manufacturing and quality product design. From our selection of raw materials and maximization of material yields through our manufacturing processes and end-of-life management strategies, ATI serves the demands of today's customer while preparing for tomorrow.

Manufacturing capabilities have constantly improved through the years and ATI's present location is on 6.5 acres centrally located in Greensboro, North Carolina, in a 70,000 square foot, state-of-the-art facility.

Since our 2015 Solar Manufacturing Offset Initiative, over 50% of our energy consumption has been offset by renewable solar energy.



Most **NuMetal** HPLs are available for special order, in 100% rapidly renewable, pre-consumer recycled materials that are phenol-free and have formaldehyde emissions of less than 0.01 PPM – one of the lowest in the industry. The core is made of 100% biological secondary components obtained from renewable resources and is fully recyclable.

Through a third party, Development and Test Laboratory for Wood Technology (EPH) in the Institute for Wood Technology in Germany, this product was analyzed and certified according to (EN DIN 717/1) the emission thresholds of CARB's Airborne Toxic Control Measure (ATCM) Phase 1 and 2 for HWPW, PB, and MD.

**ATI's Quality & Environmental Policy:** ATI is committed to meeting customer expectations with on-time delivery, accurate order processing, and continuous improvements to our organization.

We are investigating alternate methods of minimizing our fall off through "waste-to-profit" networking where our manufacturing waste becomes material for another product.

Our commitments don't end at the door. We understand that our supply chain partners are part of our environmental footprint. We are working with our suppliers to reclaim materials that go into our final product assembly – further minimizing the manufacturing waste that ends up in a landfill.

ATI is committed to maintaining a healthy work environment for our employees and to protecting our community in which we operate. Through continuous improvement we pledge to:

- Conduct our operations in compliance with all applicable environmental laws and regulations as well as other requirements.
- Review our established targets and objectives.
- Prevent pollution and minimize waste.

# OUR JOURNEY TO SUSTAINABILITY

At ATI Decorative Laminates, we understand sustainability is a journey of ongoing improvement and innovation.



THE FORMULA

BRUSHED ALUMINUM RIDGES - 924 PGQ



# ARTFUL METALS COLLECTION

Modern Designs  
Colorful Patinas  
Rich Oxidized Coppers  
Easy to Install  
Unbacked Metals



THE FORMULA  
FUNKY COLD PATINA + PEBBLE ALUMINUM



# Artful Metals Collection

## Modern Designs Available on Unbacked Specialty Metals

Our Fusion product line offers the Artful Metals Collection. Artful Metals are 15 unique metal and patina-inspired wall panel designs ranging from bright colorful patinas and rich oxidized coppers, to rare and artistic, modern-treated metals.

The Artful Metals Collection is available on a variety of ATI's 4' x 8' unbacked metal substrates. Our unbacked metal substrates are easy-to-install with no counterbalancing required and offer a wide range of options, including FusionSwirl, Gloss or Matte White, Mill Satin, Aluminum Composite, and our uniquely textured Pebble Aluminum. Special orders for 4' x 10' size have minimum order requirements.

With the Artful Metals Collection, you can create a unique decorative surfacing solution for your application that can be used as wall art, decorative wall protection, large-scale murals, wall dividers, and more.

### Unbacked Metal Substrates

- FusionSwirl (Hand Swirled, 4' x 10' Sheets)
- Gloss or Matte White (Photorealistic Quality, 4' x 8' Sheets)
- Mill Satin (Smooth, "Raw" Aluminum, 4' x 8' Sheets)
- Pebble Aluminum (Uniquely Textured, 4' x 8' Sheets)
- Aluminum Composite (4' x 8' Sheets)

### Features

- 15 Unique Metal Designs
- Custom Capabilities
- Easy to Install, Unbacked Specialty Metals
- Can be Bent for Some Curved Applications
- Abrasion + Impact Resistant Options Available
- Chemical Resistant
- Stain Resistant
- ArmorCoat™ Added to Some Fusion Substrates

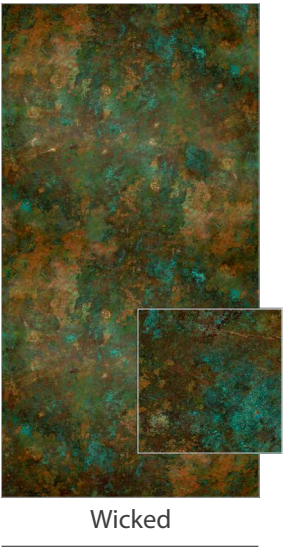
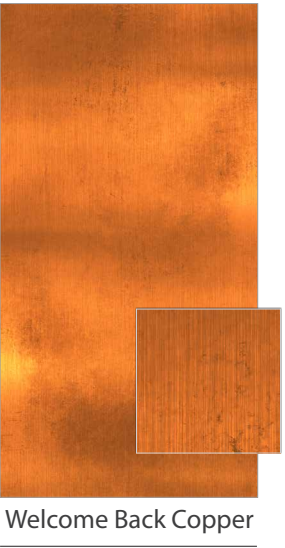
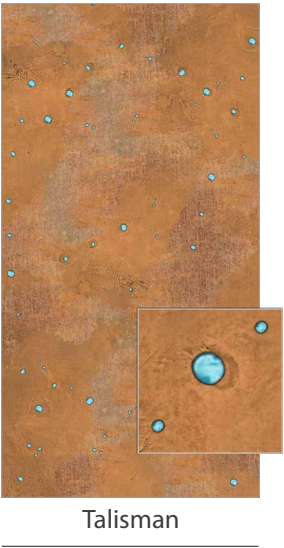
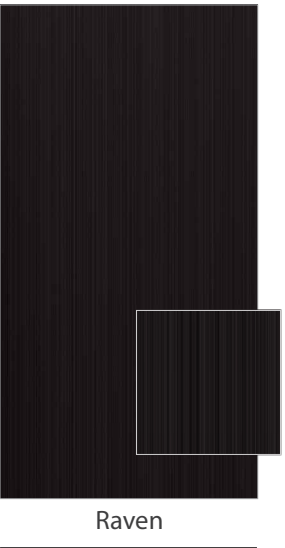
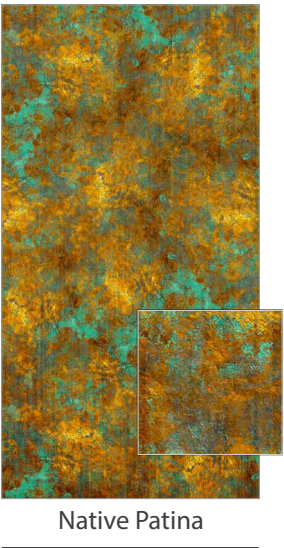
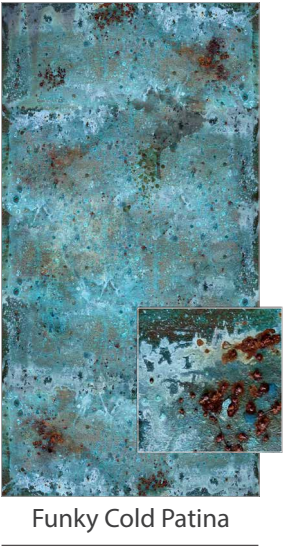
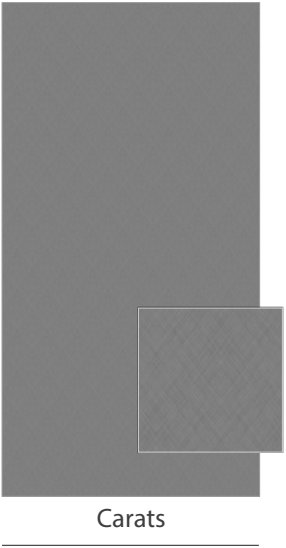
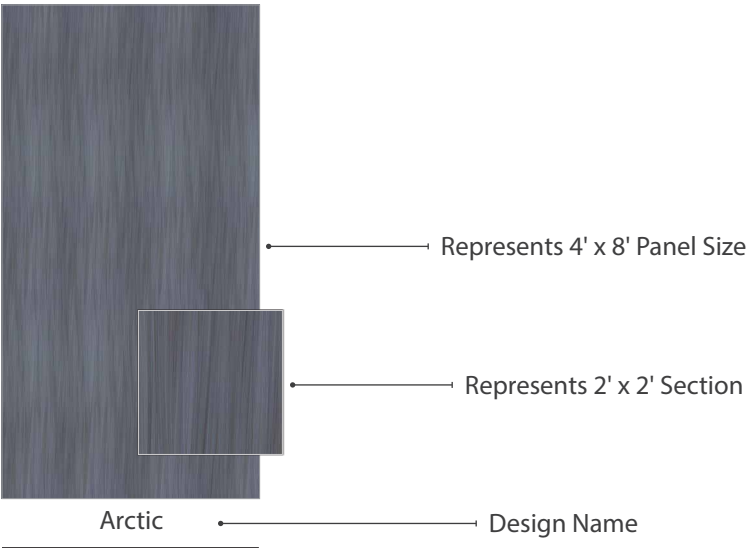




# Artful Metals Collection

## Be Inspired: 15 Unique Metal and Patina-Inspired Designs

Combine these Artful Metal designs with a variety of 4' x 8' or 4' x 10' unbacked metals to create a custom look for your space.





# Frequently Asked Questions (FAQs)

You've got questions? We've got answers. ATI is committed to helping you with your NuMetal project every step of the way. Please contact us if you have any questions or to request more information about NuMetal.

### What is NuMetal?

NuMetal is a collection of High Pressure Laminates with a thin metal surface and phenolic paper backing. These HPLs can be used for interior applications like wallcoverings, wall panels, and ceilings.

### Does ATI stock any commodity-type HPLs?

ATI stocks large quantities of commodity Brushed Stainless Steel and Brushed Aluminum sheets as part of our program.

### What is Phenolic paper backing?

Phenolic paper backing is layers of impregnated Kraft paper bonded together.

### Is phenolic paper backed metal better than unbacked metal?

In many ways, phenolic paper backed metal is superior to unbacked items. The phenolic paper backing helps protect the laminate from being dented and damaged in shipping and fabricating (it does not make the product totally resistant to damage, so the fabricator still needs to take care). Phenolic paper backed metal is also easier on router bits and saw blades, so the fabricator should get more life out of these tools using the phenolic paper backed laminate.

### What is the difference between NuMetal and other similar, competitive metal lines?

The main difference is the choice and variety of items that the NuMetal line offers. Other competitors specialize in standard melamine HPLs, whereas we focus solely on the metal market. The phenolic paper-backed HPLs are all made the same way and fabricated with the same standard tools. There is more of a difference when compared to some of the unbacked metals. A lot of these items do not have a phenolic paper backing. This makes the items a little more difficult to fabricate and a little harder on fabricators' tools.

### How can NuMetal be used in my project?

NuMetal is recommended for all vertical and light-duty horizontal use. Claddings for walls or ceilings, doors or frames,

furniture, light-duty horizontal surfaces, and displays are just a few examples of areas for NuMetal installation.

### How about size and thickness?

Thickness is approximately .035" with the exception of Unique Art and stainless steel, which are .040" thick. Polished aluminum surfaces are anodized. Brushed aluminum and copper surfaces are lacquered. NuMetal sheets are typically 4' x 8' with 4' x 10' sheets available in select designs. See pages 36-37 for additional details.

### How is NuMetal fabricated?

NuMetal is fabricated with the same tools used on any high pressure decorative laminate and bonded to the same type of substrates commonly used in the trade. Special care must be taken to avoid denting the surface with tools or scratching the surface with particles of metal. Carbide-tipped blades and bits are recommended. Dull blades will generate heat and scorch metal.

### How can NuMetal be shipped?

NuMetal can be shipped via truck, wooden crates, or rolled for courier shipment, depending on the pattern and size of the order. It is recommended that soon after receipt the NuMetal should be removed from the container and stored flat so excessive roll set does not take place.

### Is there any special treatment required before or after fabrication to ensure longevity of the product?

Anodization produces a hard surface that will not tarnish and has the high abrasion resistance of aluminum. All products are covered with a clear, peel-off mask to protect the finish. This mask should be left on during fabrication to avoid marring the surface.

### Is the lacquer compatible with other systems?

All brushed NuMetal, Copper, and Unique Art laminates are coated with cellulose-based lacquer. This lacquer is compatible with other lacquer systems, which allows for additional finishing if necessary.

### What type of adhesive is recommended?

Any contact cement or cold-set adhesive normally used with decorative laminates is suitable. Avoid adhesive spreading or setup on metallic surface. USE ONLY NAPHTHA OR BENZINE IN ADHESIVE CLEANUP – do not use lacquer solvents or other adhesive solvents, which attack lacquer coatings.

### How should NuMetal be stored?

It is important to store the product flat and not on edge, as storing on edge can cause the sheet to bow after some time. Metal laminates should be stored face up in a cool, dry area and in a completely supported flat position. Use a top sheet of chipboard or similar material to hold stored sheets flat.

### How should NuMetal be cleaned?

Make sure that the cleaning agent used is compatible with either our anodized or lacquered products prior to use. Clean surfaces with a soft cloth using household cleaner - waxes, Windex-type solutions, or ordinary soap and water. Good furniture or automobile waxes provide additional protection for all metal laminate surfaces.

### Are there any precautions to consider when handling the product?

Metal laminates will conduct electricity and can cause shocks or short circuits when in contact with ungrounded electrical circuits. This product is laminated aluminum, copper, or stainless steel of the highest quality and brilliance. Slight surface imperfections are normal. PLEASE INSPECT CAREFULLY PRIOR TO USE to ensure the material is suitable for your needs.

### Is counterbalancing necessary for NuMetal?

Counterbalancing is necessary as with other High Pressure Laminates to prevent warping of the substrate like wallcoverings, wall panels, ceilings and surfaces.

### Is there an option where counterbalancing isn't required?

Yes! The Artful Metals Collection is available on a variety of ATI's 4' x 8' unbacked metal substrates. Our unbacked metals are easy-to-install with no counterbalancing required. We offer a wide range of options including FusionSwirl, Gloss or Matte White, Mill Satin, Aluminum Composite, and our uniquely textured Pebble Aluminum. FusionSwirl sheets come in a standard 4' x 10' size, with other aluminum sheets available in 4' x 10' as a special order. Special orders will have minimum order requirements; ask an ATI representative for details.

### The Artful Metals Collection has such a variety of unbacked metal substrates to choose from. How do I know which substrate to use for my project?

Already know what substrate you want? Great! If not, no worries! Please talk with us about your project and we can help you. Keep in mind that your choice of substrate plays a very critical role in image quality, as well as the look and feel that you want for your project. We can help you find what works best for you.

## Contact ATI Laminates

800.849.1320

Text Us at 336.389.8273

info@advtechnology.com

ATILaminates.com/NuMetal  
Live Chat Feature Also Available!

## Follow Us on Social



Check ATILaminates.com for updated technical information and installation videos for NuMetal products.



# Quick Reference Guide

## NuMetal Collection: Product Quick Reference

Collection	Product Name & Finish	Item Number	4' x 8'	4' x 10'	Rollable for Shipment
Aluminum	Polished Aluminum	904	✓	✓	•
	Polished Smoke	1014	✓	✓	•
	Polished Brass	914	✓	✓	•
	Rose Gold	212	✓	✓	•
	Brushed Aluminum	245	✓	✓	•
	Brushed Stainless	256G	✓	✓	•
	Brushed Bronze	944	✓	✓	•
	Brushed Brass	934	✓	✓	•
	Aluminum Mill	204	✓	✓	•
	Aluminum Gun Metal	248	✓	✓	•
	Gun Metal Mill	603/248	✓		•
	Brushed Aluminum Fine Hammered	924 HAM	✓		•
	Neptune Brushed Aluminum	924 NEP	✓		•
	Neptune Polished Smoke	1014 NEP	✓		•
	Neptune Rose Gold	212 NEP	✓	✓	•
	Corrugated Brushed Aluminum	603/924	✓		•
	Corrugated Brushed Stainless Steel	603/256	✓		•
	Corrugated Mill Aluminum	603/209	✓		•
	Brushed Aluminum Diamond Plate	924 GEK	✓		•
	Brushed Stainless Diamond Plate	256 GEK	✓		•
	Diamond Mill Gun Metal	248 DIA	✓	✓	•
	Diamond Polished Smoke	1014 DIA	✓		•
	Diamond Rose Gold	212 DIA	✓	✓	•
	Titan Aluminum Gun Metal	248 BKE	✓		•
	Brushed Aluminum Mesh	924 NTZ	✓		•
	Brushed Stainless Mesh	256 NTZ	✓	✓	•
	Black Mesh	11 NTZ	✓		•
	Antique Pewter Mesh	490 NTZ	✓		•
	Brushed Aluminum Ridges	924 PGQ	✓		•
	Brushed Stainless Ridges	256 PGQ	✓		•
	Brushed Stainless Reeds	256 PTK	✓	✓	•
	Antique Pewter Reeds	490 PTK	✓	✓	•
	Aqua Polished Smoke	1014 AQA	✓		•
	Aqua Rose Gold	212 AQA	✓		•
	Waterfall Aluminum Gun Metal	248 HMS	✓		•
	Waterfall Rose Gold	212 HMS	✓		•
	Aluminum Rondo	202 RON	✓		•

 Items shown as concept

## NuMetal Collection: Product Quick Reference

Collection	Product Name & Finish	Item Number	4' x 8'	4' x 10'	Rollable for Shipment
Copper	Matte Copper	C400	✓	✓	•
	Fine Hammered Copper	C471	✓		•
	Hammered Copper	C473	✓		•
	Antique Fine Hammered Copper	C462	✓		•
	Antique Copper Mesh	401 NTZ	✓		•
	Antique Copper Ore	C431	✓		•
Unique Art	Patina Autumn Leaves	C421	✓		
	Patina Onyx	C412	✓		•
	Patina Malchit	C414	✓		•
	Madrid	CA5	✓		•

## Artful Metals Collection: Substrate Quick Reference

Collection	Substrate (Fusion)	4' x 8'	4' x 10'	Rollable for Shipment
Artful Metals	Aluminum, FusionSwirl		✓	
	Aluminum, Gloss or Matte White	✓		
	Aluminum, Mill Satin	✓		
	Aluminum, Pebble	✓		
	Aluminum, Composite	✓		

**IMPORTANT DISCLAIMER:** We believe all the information correct. However, we are not fabricators and are merely passing on information received from fabricators who have worked successfully with NuMetal. It is totally the responsibility of the fabricator to completely test the adhesives and methods of fabrication to insure the results are satisfactory for the fabricator’s requirements. We are not responsible for any fabrication costs involved with using NuMetal. See our warranty section.

**\*Some NuMetal products are available as 4' x 10' for special orders. Please call for more information.**

- ✓ For products/substrates; available in specified size
- Rollable for Shipment
- 1 Special order requirements; call ATI Customer Service at 800.849.1320



# How to Order

## Client Satisfaction & Quality for Your Dollar Are the Goals We Try to Achieve

**When Ordering Please Specify:**

- 1. **Pattern Name and Number**
- 2. **Color Name and Number**
- 3. **Size and Thickness**
- 4. **Type of Installation**  
(i.e.: Wall, column, fixtures, or specify other)

**Technical Specifications**

Please see the Technical Specs on our website at [ATILaminates.com/Resources](http://ATILaminates.com/Resources).

**Return Policy**

All shipments are to be inspected within 10 working days after delivery. ATI is to be informed in writing of any potential adjustment necessary. If returned undamaged, return of first-quality stocked items subject to a 20% restock fee.

**Samples**

Due to printer and digital screen limitations, patterns and finishes shown in this catalog may not accurately reflect NuMetal products. Request tangible samples to be verified and approved prior to specification and final application. Samples are available upon request. Be sure to visit us online at [ATILaminates.com](http://ATILaminates.com) for the latest designs and finishes.

**Conditions and Warranty**

ATI Decorative Laminates warrants to the original consumer purchaser for one (1) year after date of purchase that, under normal use and service, MirroFlex™, Fusion, NuMetal™, and LumiSplash™ products are free from manufacturing defects and conform to published specifications. This warranty applies as long as the consumer purchaser and/or installer follows ATI's installation instructions (methods), which also includes using recommended adhesives, when adhering ATI's products to recommended surfaces. ATI Decorative Laminates' products are intended for primarily interior applications.

ATI Decorative Laminates believes all information contained herein to be correct. It is the responsibility of the fabricator/customer to completely test the adhesives and methods of fabrication to ensure that the results are satisfactory. The seller's only obligation will be to replace product on a one-to-one basis in the event it is covered under the above warranty. ATI is not responsible for any fabrication, ancillary, or labor costs involved with using its products. Neither the manufacturer nor the seller shall be liable for any additional damage or loss, directly or indirectly, arising as a result of using its products.

Slight imperfections and color variations can occur and are considered normal. Please inspect each product carefully before fabrication to ensure it meets your needs.

### Follow Us on Social



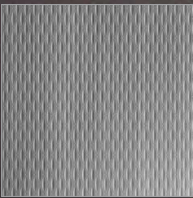
### Contact ATI Laminates

800.849.1320 

Text Us at 336.389.8273 

[info@advtechnology.com](mailto:info@advtechnology.com) 

[ATILaminates.com/NuMetal](http://ATILaminates.com/NuMetal)  
Live Chat Feature Also Available! 



THE FORMULA

BRUSHED ALUMINUM WAFFLE - 924 WAF





---

## Design Beyond the Surface

[ATILaminates.com/NuMetal](http://ATILaminates.com/NuMetal)

800.849.1320

---