



ATI
DECORATIVE
LAMINATES

MIRROFLEX™

DEEPLY TEXTURED
DECORATIVE LAMINATES

RETAIL
CONTRACT
INTERIOR DESIGN
HOSPITALITY

CONTENTS

THE FORMULA	4
WHY CHOOSE MIRROFLEX?	6
MIRROFLEX WALLS	10
WALL PANELS	12
WAINSCOTING	18
BACKSPLASHES	22
MIRROFLEX CEILINGS	26
CEILING TILES	28
LIGHT DIFFUSERS	36
LUMINOUS CEILINGS	37
MIRROFLEX SURFACES	38
DOOR SKINS	42
CUSTOM TOOLING	46
TWO-TONE	47
FLAT SHEETS	48
RENU	50
TUBS & SHOWERS	52
ACCESSORIES	54
ECCOFLEX & SUSTAINABILITY	56
FINISHES	60
QUICK REFERENCE GUIDE	62
TECH & TERMINOLOGY	64
FAQs	65
FABRICATION & INSTALLATION	66
HOW TO ORDER	68



THE FORMULA

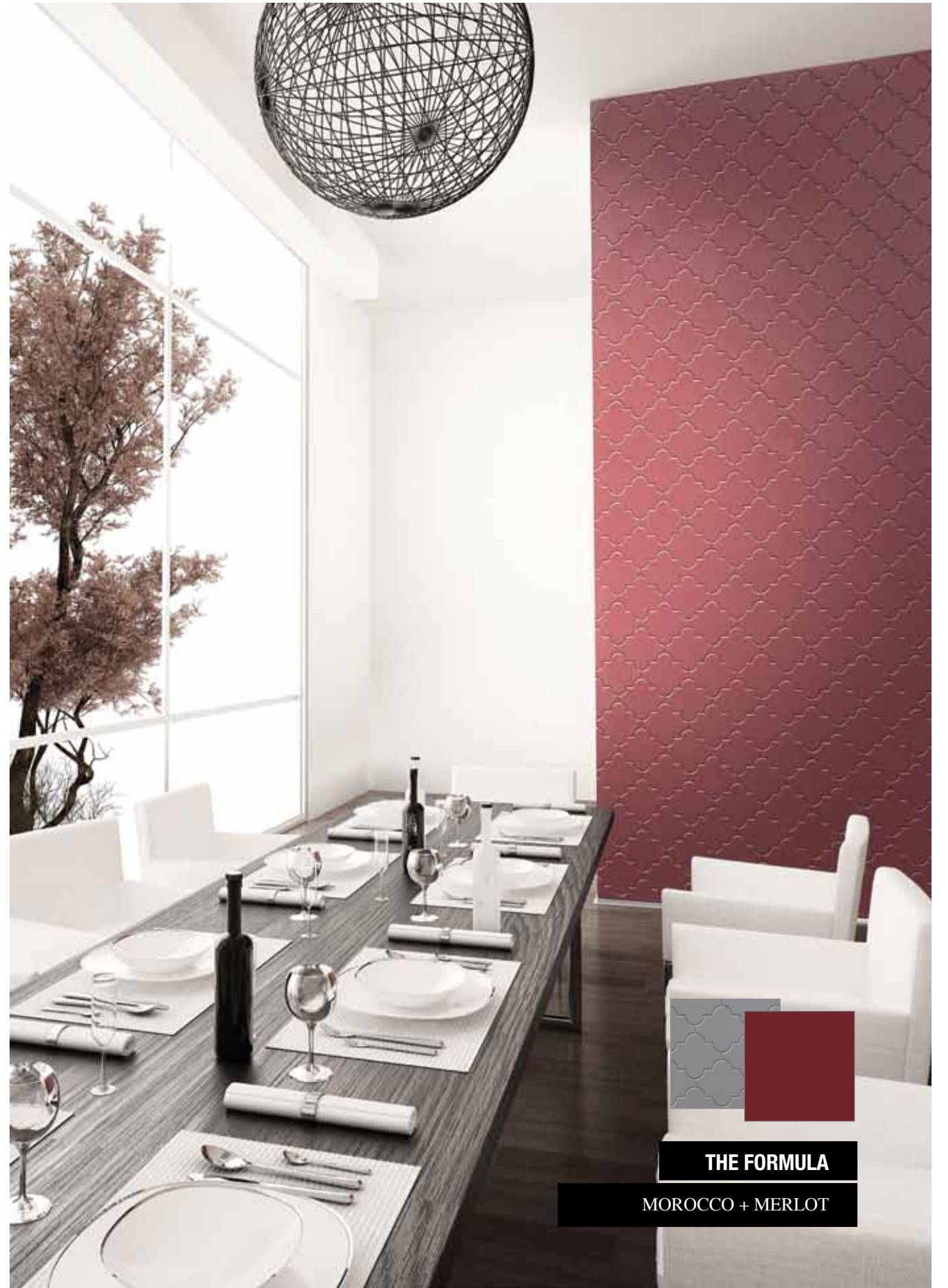
GOBI VERTICAL + PAINTABLE

FRONT COVER: AUDREY IN BRUSHED NICKEL BACK COVER: NETTLE IN ECCOFLEX BLACK



THE FORMULA

SHALLOT + WINTER WHITE



THE FORMULA

MOROCCO + MERLOT

YOUR FORMULA FOR SUCCESS

FOR MORE THAN 35 YEARS, ATI DECORATIVE LAMINATES HAS BEEN HEADQUARTERED IN GREENSBORO, NORTH CAROLINA.

THE FAMILY-OWNED COMPANY IS ISO 9001, ISO 14001 AND HUB (HISTORICALLY UNDERUTILIZED BUSINESS) CERTIFIED.

SINCE 1979, ATI HAS BEEN A LEADER IN DECORATIVE THERMOPLASTIC AND METAL LAMINATES USED FOR COMMERCIAL AND RESIDENTIAL DESIGN. RECENTLY RE-BRANDED TO ATI DECORATIVE LAMINATES, WE CONTINUE TO CREATE INNOVATIVE DECORATIVE LAMINATES DESIGNERS USE TO TRANSFORM SPACES.

ATI'S MIRROFLEX™ PRODUCT LINE allows you to design inspiring spaces with great ease. MirroFlex Structures are deeply textured, 3-dimensional wall panels and ceiling tiles. This product line offers design flexibility and is available in multiple sizes, suitable for walls, wainscoting, ceilings, backsplashes, furniture, display fixtures and other interior design applications. Whether a contemporary or more traditional design is required, the design and finish combination that MirroFlex Structures offers will suit most needs. Most panels also feature the BIO (Built In Overlap), a unique seam system that makes installation easy and creates less visible seams.

Hundreds of designs and color combinations are available, many via our Quick Ship program for faster turnaround, while our custom program allows for infinite possibilities.

Use this catalog as a reference guide for some of the possibilities that can be achieved with MirroFlex Structures. MirroFlex accessories and surface options are also included. Consult with your local ATI representative with specific questions, technical requirements or project needs.



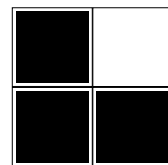
MADE
IN THE
USA

.25lb

PER
SQUARE
FOOT



FLEXIBLE
FOR EASY
SHIPPING



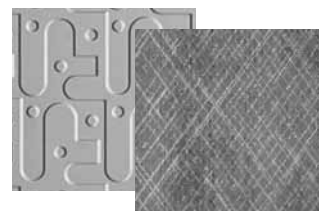
BIO (BUILT-IN-OVERLAP)
FOR EASY
INSTALLATION



ANY
PATTERN + ANY
FINISH
= MIRROFLEX STRUCTURES

LOOK FOR
THE FORMULA >

PATTERN + FINISH



THE FORMULA

CONNECT + CROSSHATCH SILVER

WHY CHOOSE MIRROFLEX?

1. EASY TO INSTALL

Fabrication and installation of MirroFlex is easy. The product is compatible with many different adhesives and installation methods.

2. TUFFCOTE™

TuffCote™, a revolutionary scratch-resistant protective shield, is available on most MirroFlex and MirroFlex Structures finishes. For further details, visit atilaminates.com or call Customer Service at 800 849-1320.

3. LIGHTWEIGHT

.25 pounds per square foot.

4. FLEXIBLE

Sheets can be rolled and boxed for courier shipment.

5. FIRE RETARDANT

MirroFlex meets ASTM E 84 Class A. Even though it is fire retardant, panels can be deformed with excessive heat. Never expose to over 140° F. Specific technical fire data is available upon request. Painted tiles may no longer be fire retardant under ASTM E 84 Class A and must be tested on an individual basis.

6. HIGH IMPACT RESISTANT AND CHEMICAL RESISTANT

Complete testing data is available on our website.

7. PAINTABLE + CUSTOM COLORS

Certain MirroFlex finishes can be coated with a variety of paint types to match your finishes. Custom colors are also available, although minimums apply. See our technical information on our website or call Customer Service for more information.

8. MADE IN USA AND ISO CERTIFIED

MirroFlex products are made with pride in the USA and ATI is ISO Certified which enables us to have the “hands on” control necessary to maintain the high standards customers expect from us.

9. MIRROFLEX STRUCTURES ARE AVAILABLE WITH CUSTOM DESIGNS!

The possibilities are endless. Call Customer Service to discuss your custom project.

FEATURES

-  **IMPACT RESISTANT**
-  **CHEMICAL RESISTANT**
-  **ABRASION RESISTANT**
-  **STAIN AND FIRE RETARDANT**
-  **MADE IN THE USA**



HARLEY-DAVIDSON SHOWROOM

GREENSBORO, NORTH CAROLINA

WHEN HARLEY-DAVIDSON OF GREENSBORO WANTED TO UPDATE THEIR RETAIL SPACE, THEY TURNED TO KENTUCKY-BASED AGI, ONE OF ONLY THREE AUTHORIZED DESIGN FIRMS FOR HARLEY DAVIDSON DEALERSHIPS NATIONWIDE.

AGI partnered with ATI Decorative Laminates to explore products with a different design approach that allowed them to maintain a modern look, but respected Harley's unique 100-plus years of history.

The ATI sales team offered several suggestions from its broad portfolio of products tailored for heavy-use, retail commercial spaces. ATI had worked on a previous renovation at the dealership, and understood the space and the client's needs.

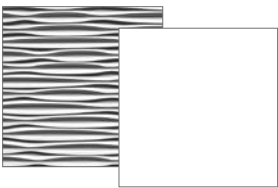
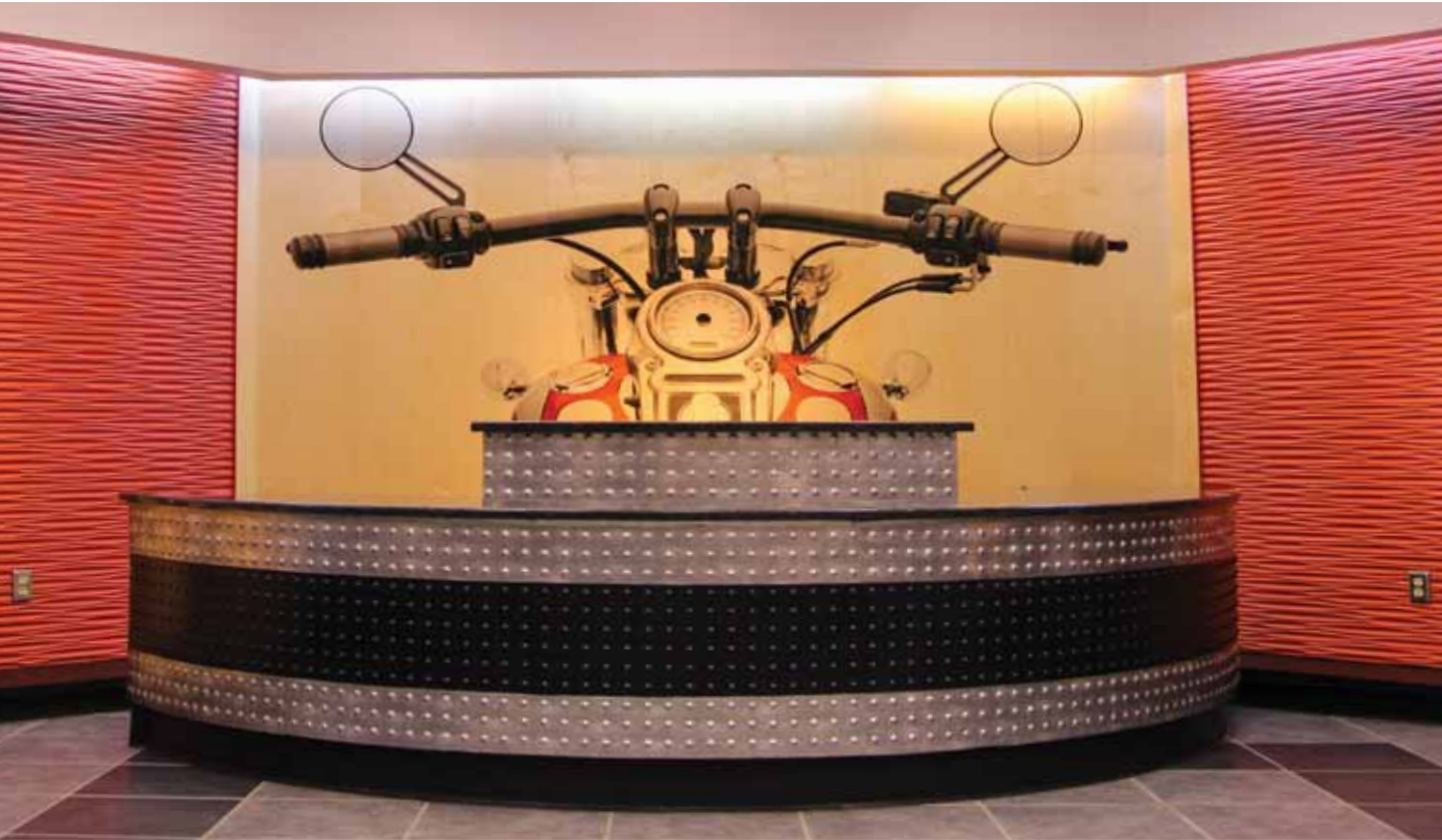
The continuity ATI provided allowed several existing design elements to survive the renovation. The MirroFlex dome pattern in EccoFlex black and crosshatch silver stayed on the wall, while other areas – including columns, walls, and ceilings – were prepped for new installation. The mirror silver MirroFlex Ceiling Tiles were given new life with a muted black finish. To provide additional decorative detail, MirroFlex Cascade was specified on the store's

columns to ensure impact-resistance for the high-use retail space.

AGI specified Fusion Wood, another product line offered by ATI Decorative Laminates, to showcase iconic moments from the Harley archive. AGI worked with ATI's in-house production team from concept to completion, ensuring that the graphics were designed not only to look great, but also to seamlessly transition from one panel to the next.

The biggest large-format mural in the store was 2' by 72', which presented a unique set of challenges. ATI's graphics team rose to the occasion by modifying grainy, faded, irregularly-sized photographs into impressive, oversized pieces of work. ATI's production team adhered to the highest standards through all points in the Fusion process.

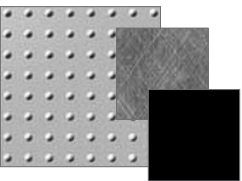
ATI provided technical assistance to the contractor, ensuring that all products were installed in a way that maximized longevity and functionality.



THE FORMULA

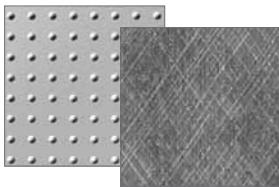
SAHARA + PAINTABLE*

*Custom Color Match Paint



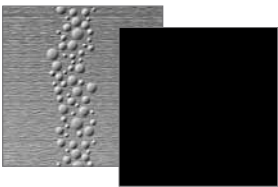
THE FORMULA

DOME 2 + CROSSHATCH SILVER AND ECCOFLEX BLACK



THE FORMULA

DOME 2 + CROSSHATCH SILVER



THE FORMULA

CASCADE + ECCOFLEX BLACK

CASE STUDY OVERVIEW

CEILINGS

6,408

SQUARE FEET OF
MIRROFLEX
CEILINGS

STRUCTURES

512

SQUARE FEET
OF MIRROFLEX
STRUCTURES

WALLS

1,952

SQUARE FEET OF
FUSION WOOD
MURALS



MIRROFLEX WALLS

MIRROFLEX STRUCTURES OFFER A RANGE OF SOLUTIONS FOR ALMOST EVERY WALL-PANELING REQUIREMENT. IT'S IDEAL FOR ADDING TEXTURE AND 3-DIMENSIONAL DETAIL TO DECORATIVE WALLS.

WALL PANELS
WAINSCOTING
BACKSPLASHES






With multiple design and finish options, MirroFlex delivers extensive product variety at highly competitive, affordable prices.

Whether it is a wainscoting in a high-traffic hotel lobby or a beautiful backsplash for a residential kitchen, MirroFlex Structures is a great choice. Most finish and pattern combinations are well suited for busy public areas subject to abuse. It is easy to clean and offers high impact resistance that makes it a suitable option for both commercial and residential applications.

APPLICATIONS

- WALL PANELS
- WAINSCOTING
- BACKSPLASHES

FEATURES

-  **IMPACT RESISTANT**
-  **CHEMICAL RESISTANT**
-  **ABRASION RESISTANT**
-  **STAIN AND FIRE RETARDANT**
-  **TUFFCOTE AVAILABLE ON SOME FINISHES**



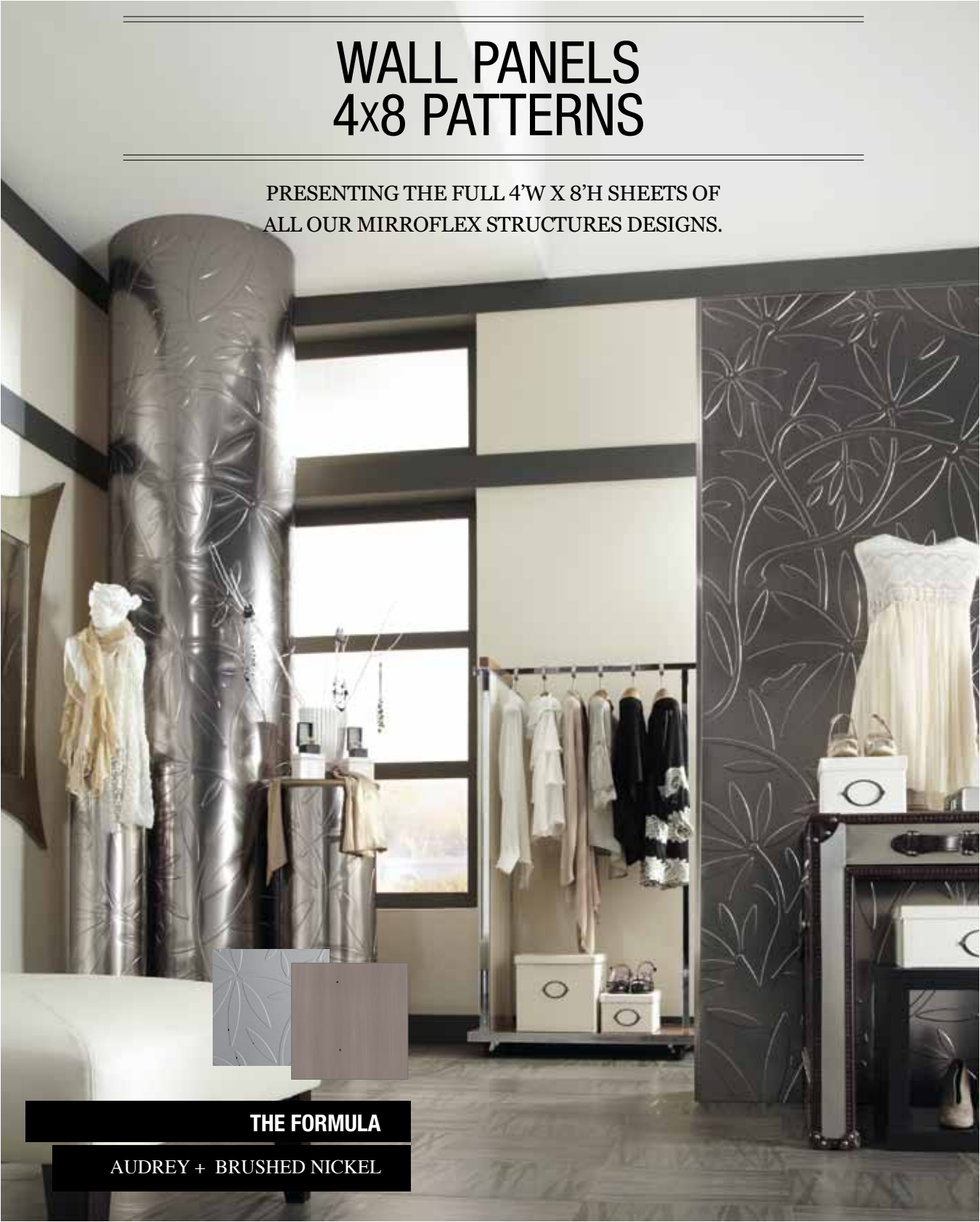
THE FORMULA

ALPHABET SOUP + WINTER WHITE

VIEW HIGH RESOLUTION DETAILS ONLINE AT:
WWW.ATILAMINATES.COM/MIRROFLEX

DETAIL VIEW REPRESENTS A 12" X 12"
SECTION OF THE PANEL PATTERN.

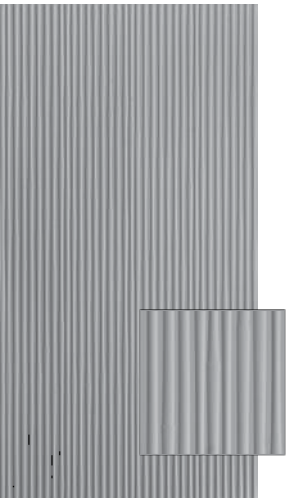
WALL PANELS



ALPHABET SOUP



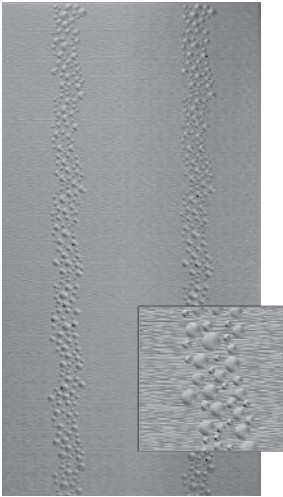
AUDREY



BAMBOO



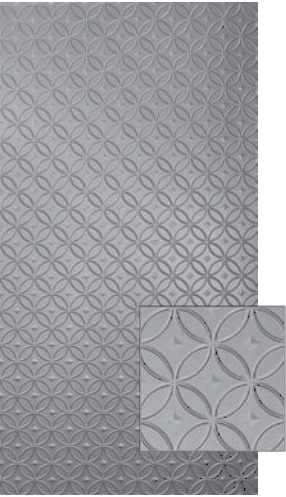
BOSTON



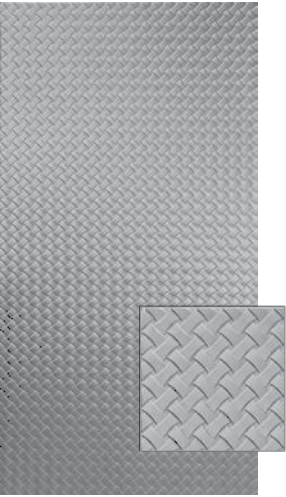
CASCADE



CAYMAN



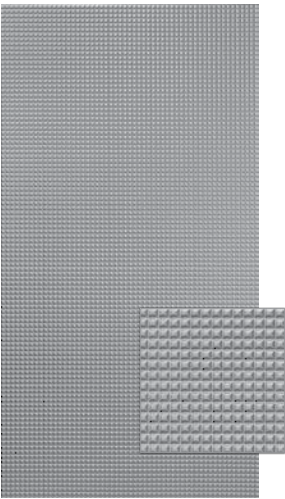
CELESTIAL



CELTIC WEAVE



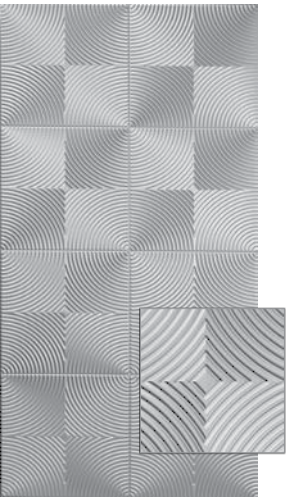
CHARLESTON



CHOCOLATE SQUARES



CONNECT



CURVATION

WALL PANELS



CURVES



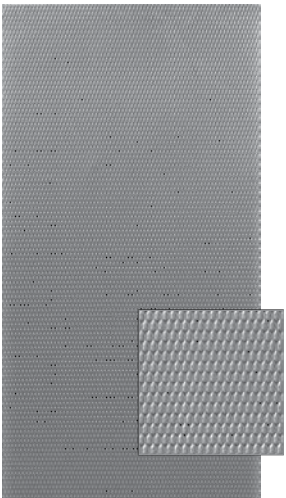
DAMASK



DIAMOND PLATE



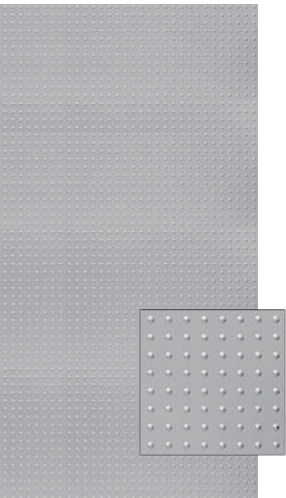
DOGWOOD



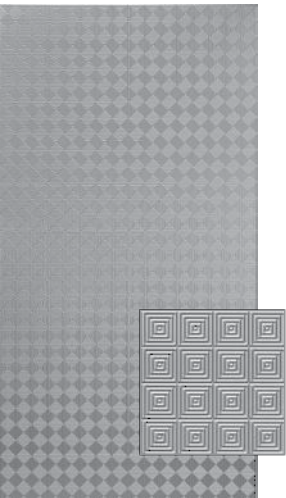
MARQUIS



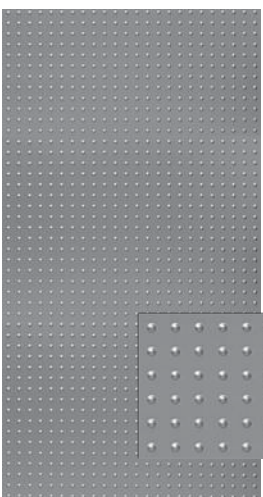
METAL PLATES



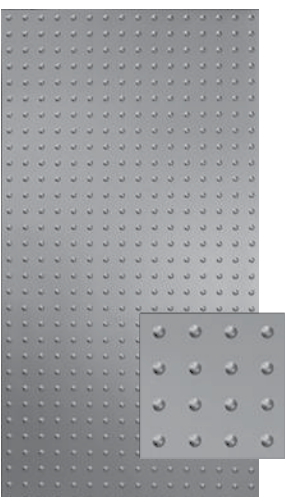
MINI DOME



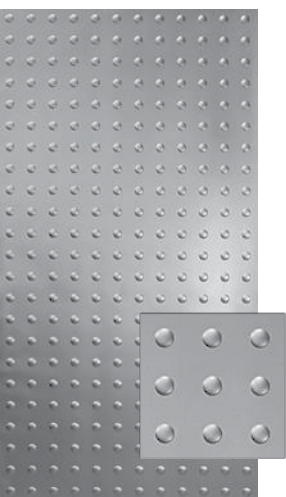
MINI QUADRO



DOME 1



DOME 2



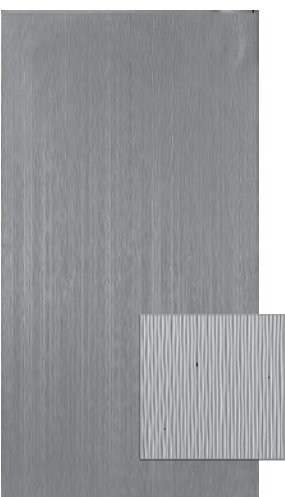
DOME 3



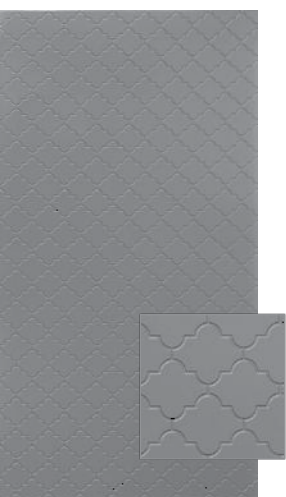
FLUTED



MOJAVE



MOJAVE VERTICAL



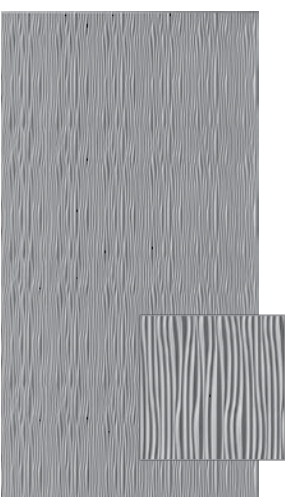
MOROCCO



NETTLE



GOBI



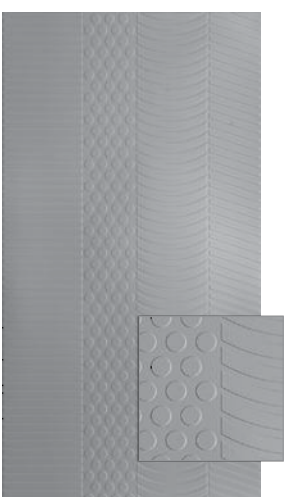
GOBI VERTICAL



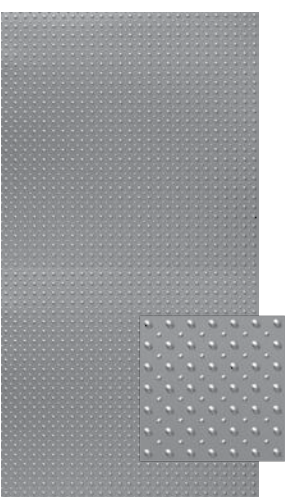
HERRINGBONE



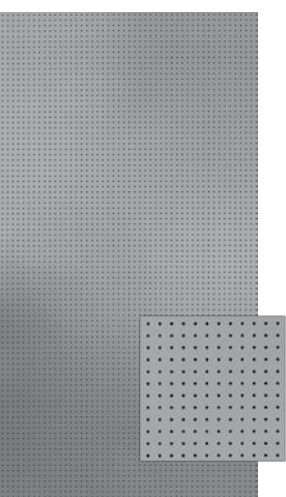
KELP



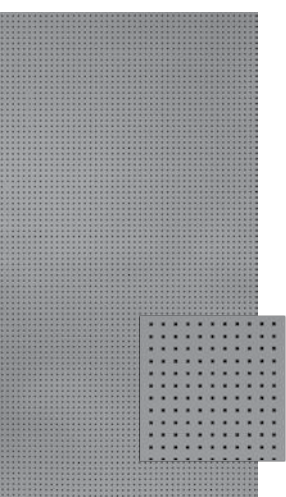
NEXUS



OVALS

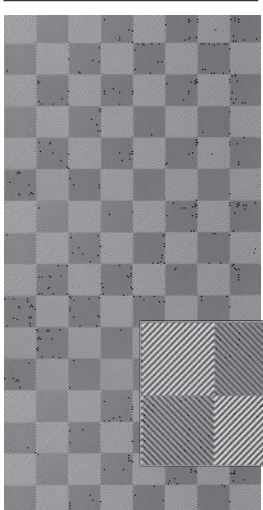


PERF ROUND



PERF SQUARE

WALL PANELS



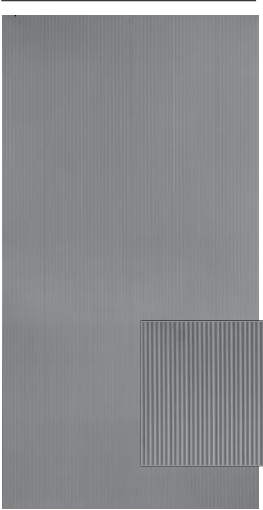
QUADRO



QUILTED



RANDOM LINES*
* A & B Sheets



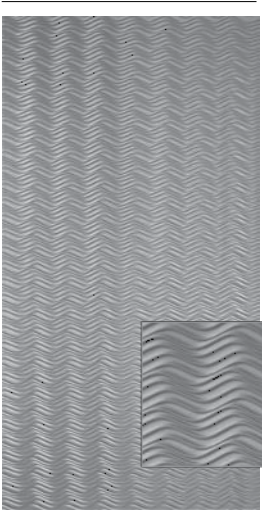
RIB 1



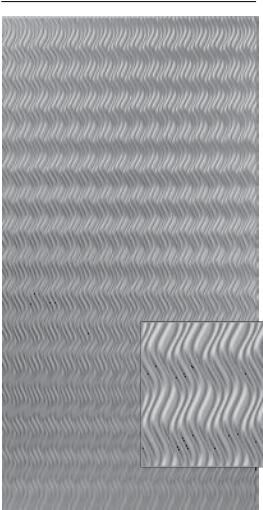
STRIKE



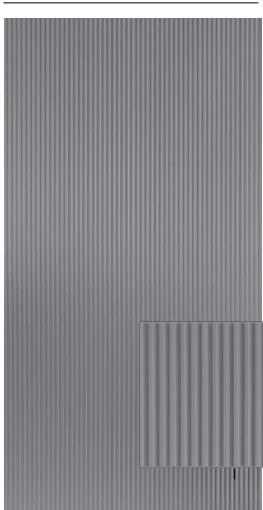
TETRUS



WAVATION



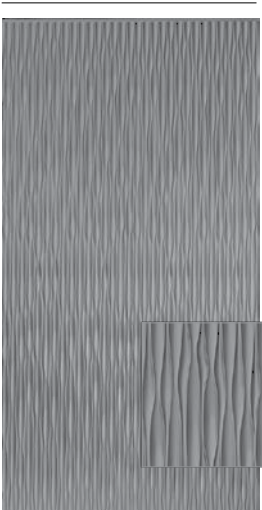
WAVATION VERTICAL



RIB 2



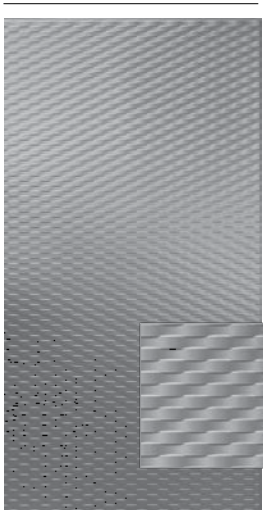
SAHARA



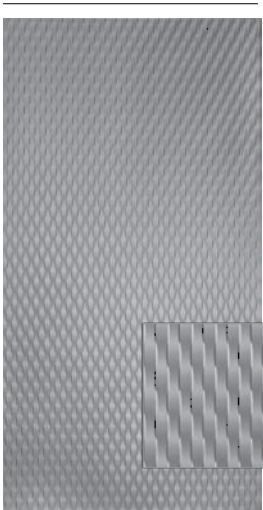
SAHARA VERTICAL



SAVANNAH



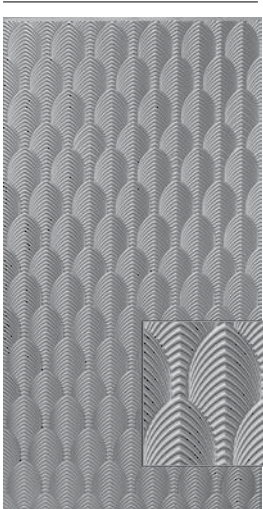
WEAVE



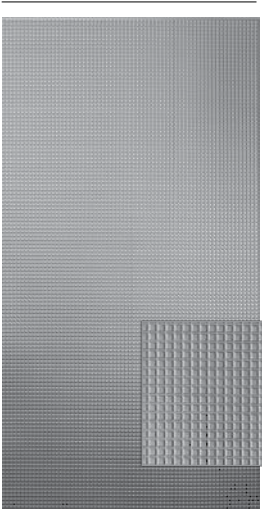
WEAVE VERTICAL



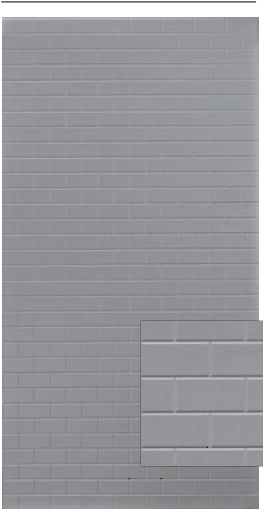
SHALLOT



SOUTH BEACH



SQUARE 5








SUBWAY TILES

MIRROFLEX WAINSCOTING

MirroFlex wainscoting is available in 30"- 32" x 48" panels with a unique BIO feature that makes seams less visible. It is impact resistant, fire retardant, durable and extremely light weight. Installation is easy, as the wainscoting is compatible with many wall adhesives. Visit atilaminates.com for more information.

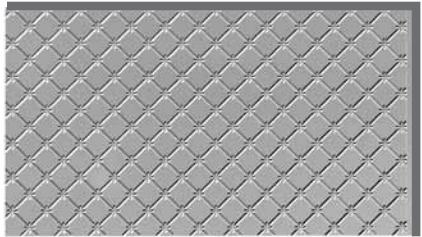
MirroFlex Structures panels are designed to add visual and structural interest to any commercial or residential environment. Available in 41 finishes.

FEATURES

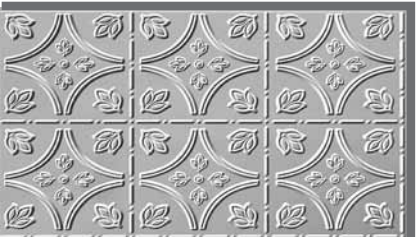
-  **EASY TO INSTALL**
-  **IMPACT RESISTANT**
-  **CHEMICAL RESISTANT**
-  **STAIN AND FIRE RETARDANT**
-  **TUFFCOTE AVAILABLE ON SOME FINISHES**



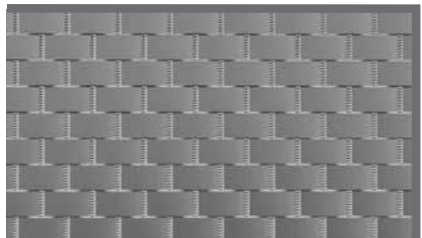
30"- 32" X 48" WAINSCOT PANEL PATTERNS



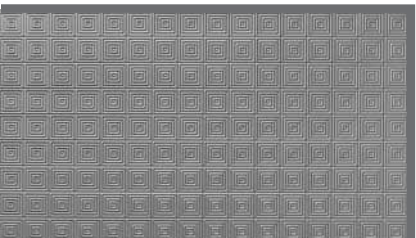
ANNAPOLIS



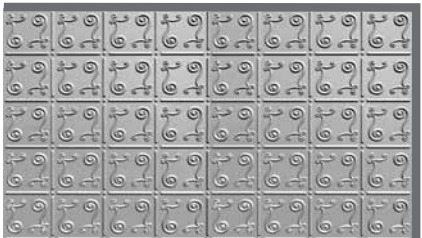
CHATHAM



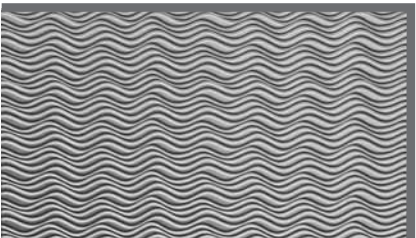
GIANT WEAVE



MINI QUADRO



NEW ORLEANS



WAVATION



THE FORMULA

ANNAPOLIS + BRUSHED ALUMINUM



THE FORMULA

TETRUS + ARGENT BRONZE

MIRROFLEX BACKSPLASHES

IDEAL FOR KITCHEN AND BATH

BACKSPLASHES, displays, furniture, walls and other applications that call for smaller panels or mini patterns. MirroFlex Backsplashes are popular with the residential DIY market as they are simple to install and offer superior durability as many patterns are available with TuffCote.

These backsplash panels are ultralight; chemical, stain and impact resistant; and fire retardant. They have been specifically designed to fit backsplash areas with minimal waste. The 18" x 24" panels also use our unique BIO feature that makes seams less visible.

FEATURES

-  **DIY**
-  **IMPACT RESISTANT**
-  **FIRE RETARDANT**
-  **TUFFCOTE**
-  **OPTIONAL ACCESSORIES AVAILABLE**
-  **BIO ON ALL PATTERNS**



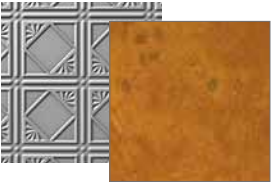
THE FORMULA

SAVANNAH + MOONSTONE COPPER



THE FORMULA

CELESTIAL + OIL RUBBED BRONZE



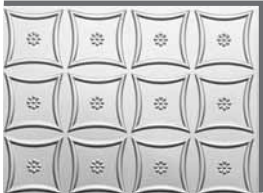
THE FORMULA

CHARLESTON + MUTED GOLD

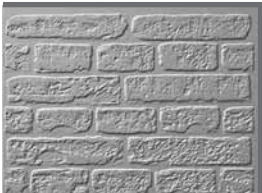


BACKSPLASHES

18” X 24” BACKSPLASH PANEL PATTERNS



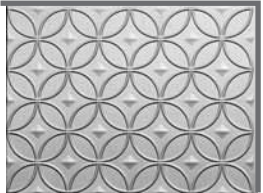
AMERICANA



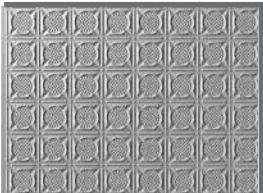
BRICK



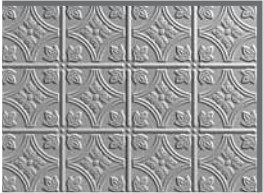
CALIFORNIA TILE



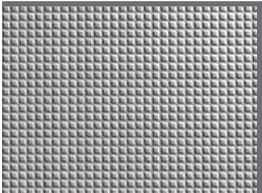
CELESTIAL



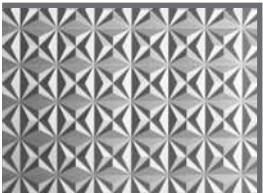
SAN DIEGO



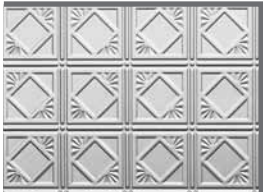
SAVANNAH



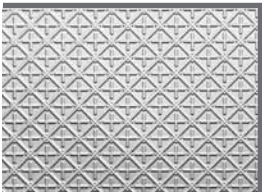
SQUARE 5



STAR



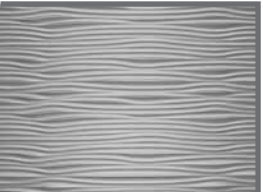
CHARLESTON



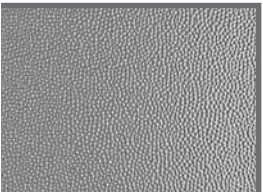
CHESAPEAKE



FLEUR



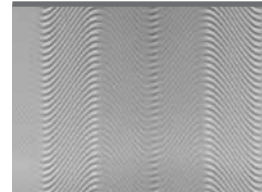
GOBI



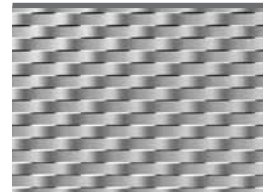
STRIKE



SUBWAY TILE



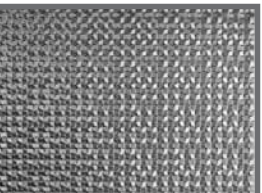
TIDAL



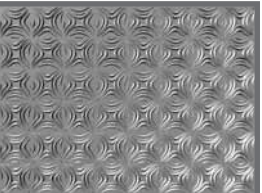
WEAVE



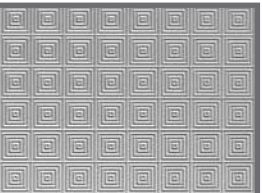
HERRINGBONE TILE



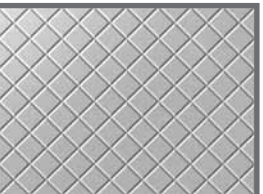
METRO



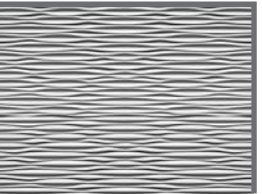
MINI DOGWOOD



MINI QUADRO



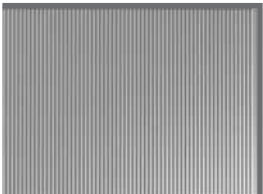
MINI QUILTED



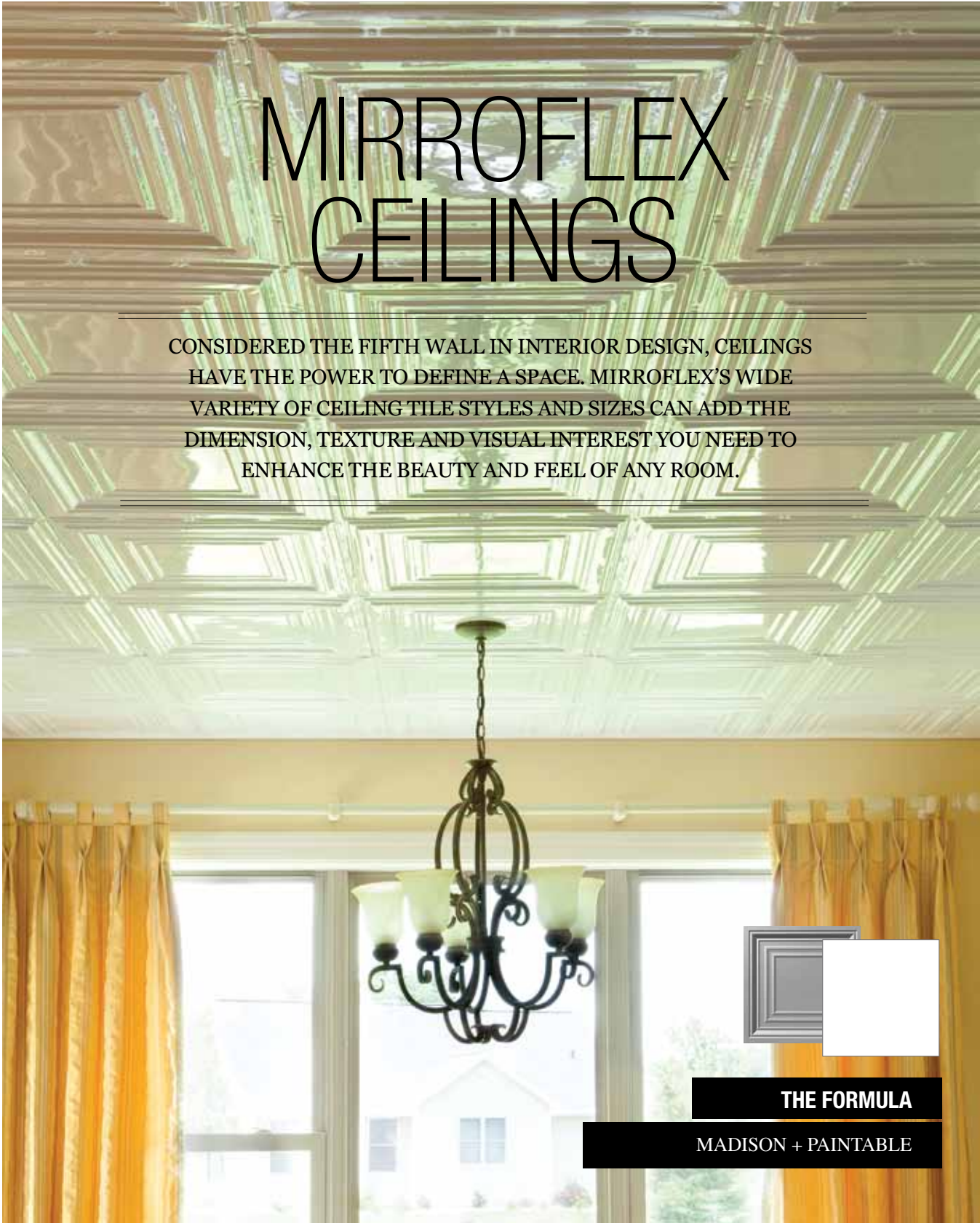
MOJAVE



MOROCCO TILE



RIB 1



MIRROFLEX CEILINGS

CONSIDERED THE FIFTH WALL IN INTERIOR DESIGN, CEILINGS HAVE THE POWER TO DEFINE A SPACE. MIRROFLEX'S WIDE VARIETY OF CEILING TILE STYLES AND SIZES CAN ADD THE DIMENSION, TEXTURE AND VISUAL INTEREST YOU NEED TO ENHANCE THE BEAUTY AND FEEL OF ANY ROOM.

CEILINGS ARE NO LONGER CONSIDERED a flat, white plane, but a canvas for expression. When treated properly, ceilings can become the focal point of a room. They have the ability to expand or contract a space, making a cavernous hall seem more intimate or creating a feeling of openness and light in an office with low ceilings.

MirroFlex offers two types of ceiling products:

MIRROFLEX CEILING TILES

MIRROFLEX LUMINOUS CEILINGS + LIGHT DIFFUSERS

MIRROFLEX CEILING TILES

MirroFlex Ceiling Tiles are opaque, thermoplastic squares and rectangles available in a wide range of patterns, finishes and styles. ATI offers two Ceiling Tile options, so almost every installation situation can be accommodated.

GLUE UP: Designed with an overlap system to make installation easy, fast and forgiving. Glue Up tiles can be used on both the ceiling and the wall. Available as 2'x2' and 2'x4' sizes.

LAY IN: Designed to "lay in" inside of most suspension grid systems. The 2' x 2' scant size produces no sag. Certain patterns are available as a Tegalur option, where the embossed part of the design is lower than the suspension grid and the 4 edges are flat to fit nicely into the grid.

MIRROFLEX LUMINOUS CEILINGS + LIGHT DIFFUSERS

MirroFlex Luminous Ceilings are translucent, thermoplastic panels created in a diffuser material called Tiffany White. They are an affordable way to provide more pleasing light and reduce eye stress in the workplace. Available as MirroFlex Luminous Ceilings, with a choice of more than 50 three-dimensional patterns, or MirroFlex Light Diffusers, they provide considerable impact on room design.

See page 36-37 for more details on Luminous Ceilings and Light Diffusers.

MIRROFLEX CEILINGS

APPLICATIONS

CEILING TILES

LUMINOUS CEILINGS

LIGHT DIFFUSERS

GRIDMAX (PAGE 54)

CROWN MOLDING (PAGE 55)

FEATURES

-  **HUNDREDS OF DESIGN OPTIONS AVAILABLE**
-  **EASY TO INSTALL**
-  **COMPATIBLE WITH EXISTING GRID SYSTEMS**
-  **FIRE RETARDANT**
-  **BORDERS CAN BE ADDED IN ANY MIRROFLEX DESIGN AND FINISH**

CEILING TILES

STRIKINGLY BEAUTIFUL. DEEPLY TEXTURED.
RUGGED AND DURABLE.

THESE FOUR INGREDIENTS ARE THE FOUNDATION OF EVERY ATI
MIRROFLEX CEILING TILE. COMBINE THESE PATTERNS WITH A BROAD
SPECTRUM OF COLORS AND PATINAS TO CREATE A CUSTOM LOOK
FOR MODERN OR TRADITIONAL SPACES.

INDEX

G

2x2
Glue Up
Ceiling
Tiles

G

2x4
Glue Up
Ceiling
Tiles

L

2x2
Lay in
Ceiling
Tiles

T

2x2
Tegular
Lay In
Ceiling
Tiles

B

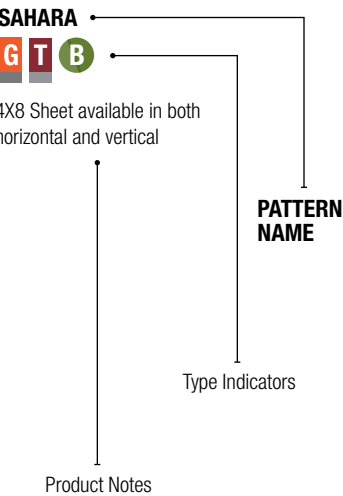
BIO
Built in
Overlap

* See Quick Reference Guide on
page 62 to view patterns that are
available in 4' x 8' size.

See Quick Reference Guide on page
62 for note on 2x2 lay-ins that have
minimums/multiples when ordering.

Patterns represent a 2' x 2' section.

THE FORMULA FOR SUCCESS BEGINS HERE



AMERICANA

G

T

B

ART DECO

G

L

B

BALTIMORE

G

G

L

B

BOSTON

G

G

L

B

CELESTIAL

G

T

B

CELTIC WEAVE

G

T

B

CHARLESTON

G

L

B

CHESAPEAKE

G

T

B

COLONIAL

G

T

B

CORRUGATED

T

CURVATION

G

T

B

CURVES

L

DIAMOND PLATE

L

DOGWOOD

G

T

B

DOME 1

L

DOME 2

L

DOME 3

L

FLEUR

G

L

GEORGIAN

G

T

B

SEE NEXT PAGE
FOR MORE --->

CEILING TILES



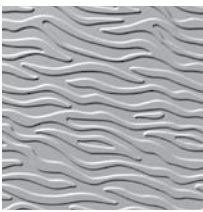
HURRICANE

G T B



INSET COFFER

T



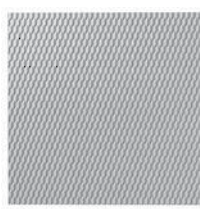
KELP

G T B



MADISON

G G T B



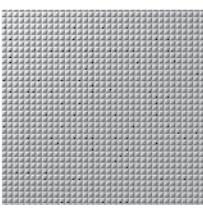
MARQUIS

L



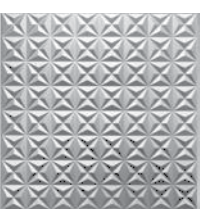
SOUTH BEACH

G T B



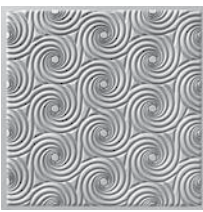
SQUARE 5

L



STAR

G T B



STORM

G T B



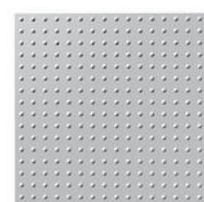
STRIKE

G G T B



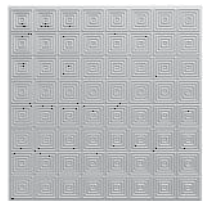
METAL PLATES

T



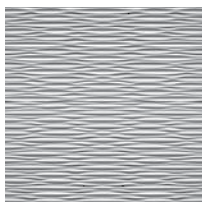
MINI DOME

L



MINI QUADRO

L



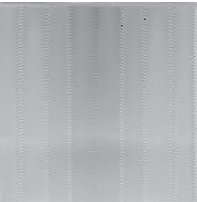
MOJAVE

G T B



PORTRAIT

G L B



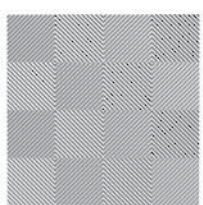
TIDAL

G T B



WAVATION

G T B



QUADRO

T



QUILTED

L



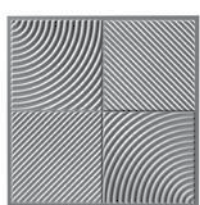
RAISED PANEL COFFER

T



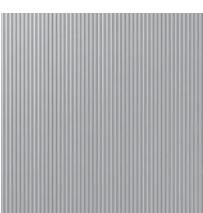
REGALIA

G L B



REVOLUTION

G T B



RIB 1

T



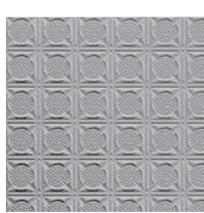
ROSETTE

G G T B



SAHARA

G T B



SAN DIEGO

G L B



SAVANNAH

G G L B

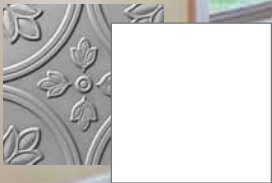
G 2X2 GLUE UP
CEILING TILES

G 2X4 GLUE UP
CEILING TILES

L 2X2 LAY IN
CEILING TILES

T 2X2 TEGULAR
LAY-IN CEILING
TILES

B BIO
BUILT IN
OVERLAP



THE FORMULA

BALTIMORE + PAINTABLE



THE FORMULA

COLONIAL & STRIKE + MOONSTONE COPPER*

*With GridMax

JACKPOT JOANIES

LAS VEGAS, NEVADA

JACKPOT JOANIE’S IS A MICRO-CASINO FRANCHISE IN LAS VEGAS THAT RECENTLY ENLISTED THE HELP OF COMPLEX BUILDERS, INC. TO RENOVATE A NUMBER OF ITS LOCATIONS IN AN EFFORT TO CREATE A GREATER SENSE OF BRAND UNITY.

MIRROFLEX CEILINGS

The design team wanted to incorporate the look of a corrugated metal ceiling without the installation challenges that a rigid material presents. So ATI studied the intricate details of corrugated metal —depth, dimensions, textures and colors — and created a new custom mold that mimicked the original material.

Once CAD drawings were approved, ATI manufactured the tiles in an attractive crosshatch silver pattern. “The finished product resembled a metal corrugated panel

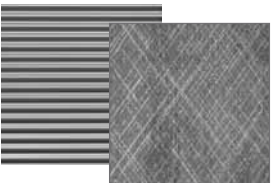
that complied with a Class A Fire Rating and weight criteria for a suspended ceiling product, and was extremely easy to work with,” said Sherman Isensee of Complex Builders. “In instances where we required additional rigidity in the panels for ceiling-mounted elements, we simply used a vinyl ceiling tile as a backer to the plastic panels.”

Jackpot Joanie's was pleased with the look and placed orders for a number of its locations, thanks to ATI's ability to provide custom services in-house and execute the project from concept to completion.



CASE STUDY OVERVIEW

- ATI PRODUCT USED: CORRUGATED IN CROSSHATCH SILVER
- ATI PRODUCT LINE: MIRROFLEX STRUCTURES CEILING TILES
- DESIGNER/BUILDER: COMPLEX BUILDERS
- INSTALLATION YEAR: 2014



THE FORMULA

CORRUGATED + CROSSHATCH SILVER

Note: Content first published in
Interiors & Sources May 2014: The Fifth Wall: In Over
Your Head

LIGHT DIFFUSERS

MIRROFLEX LIGHT DIFFUSERS are designed to replace existing prismatic diffusers in drop ceiling systems and add up to 30% brighter, more pleasing light.






Designed to fit 2' x 2' (Wavation pattern only) and 2' x 4' lightbox fixtures with tegular design for easy installation.

With a simple change to light diffusers, you can add a contemporary look to standard fluorescent light diffusers typically found in commercial interiors.

Our Diffusers are ideal for office work environments because unlike most ceiling lights which direct light downward causing computer screen glare, Diffusers direct light from side-to-side creating evenly dispersed illumination.



FEATURES

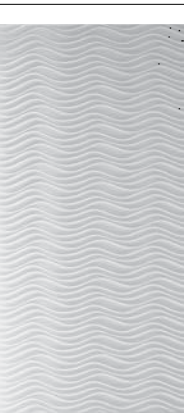
-  **COMPATIBLE WITH LIGHT BOXES IN EXISTING DROP CEILING SYSTEMS**
-  **30% MORE PLEASING LIGHT**
-  **3 PATTERNS AVAILABLE IN 2' X 4' SIZES**
-  **EASY INSTALLATION**
-  **FIRE RETARDANT**



BASKETWEAVE



REVOLUTION



WAVATION
ALSO AVAILABLE
AS A 2' X 2'

LUMINOUS CEILINGS

LUMINOUS CEILINGS bring a new dimension to an ordinary space. The evenly lit ceiling gives an open feel to a conference room, a basement or any room where you want a fresh, custom look.




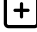

Ceilings are often overlooked in the design process, but a simple change can update the entire look of a room. MirroFlex Luminous Ceilings are an affordable choice with considerable effects on the room design.

Not only do these ceilings offer a unique 3-dimensional look, but they also give more light and stress eyes less during daily tasks. Use an existing grid system for an inexpensive makeover in just a couple of hours.

The light source above the Luminous Ceiling is typically a fluorescent light fixture centered above the grid opening, which you install prior to the ceiling tiles.

Choose any 2' x 2' MirroFlex Structures design in Tiffany White to achieve the look desired. Luminous Ceilings are lightweight and fire retardant.

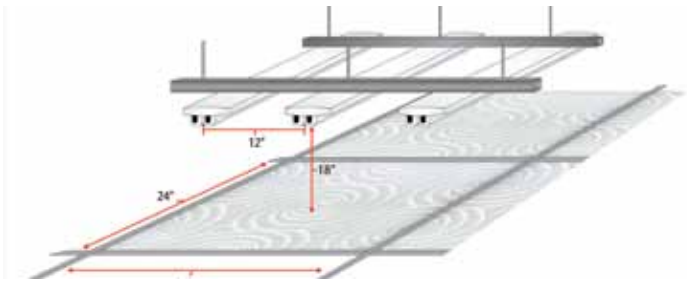
FEATURES

-  **50 DESIGNS AVAILABLE**
-  **TEGULAR DESIGN FOR EASY INSTALLATION**
-  **COMPATIBLE WITH EXISTING GRID SYSTEMS**
-  **COLORED GELS MAY BE ADDED FOR AMBIANCE**
-  **FIRE RETARDANT**



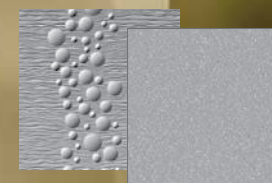
THE FORMULA

HURRICANE + TIFFANY WHITE



MIRROFLEX SURFACES

REDEFINE THE LOOK AND FEEL OF RESIDENTIAL AND COMMERCIAL SURFACES WITH MIRROFLEX. REPLACE LACKLUSTER AREAS WITH UNIQUE METALLICS, PATINAS AND WOODGRAINS, OR ADD DEEPLY TEXTURED MIRROFLEX STRUCTURES PANELS OR TILES. MIRROFLEX STRUCTURES IS PERFECT FOR ADDING TEXTURE AND 3-DIMENSIONAL ASPECTS TO DECORATIVE WALLS.



THE FORMULA

CASCADE + ARGENT SILVER



MIRROFLEX SURFACES

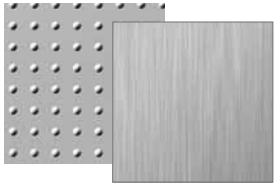
ATI CUSTOMERS use MirroFlex for a broad range of surface applications including: cabinets, elevator cab interiors, signage, boat and RV interiors, furniture, and even temporary display flooring.

We believe the most innovative application is yet to be discovered. With multiple construction options and features that range from chemical and impact resistance to water repellency and fire retardance, MirroFlex's future is determined by the customer's imagination.



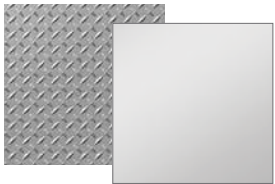
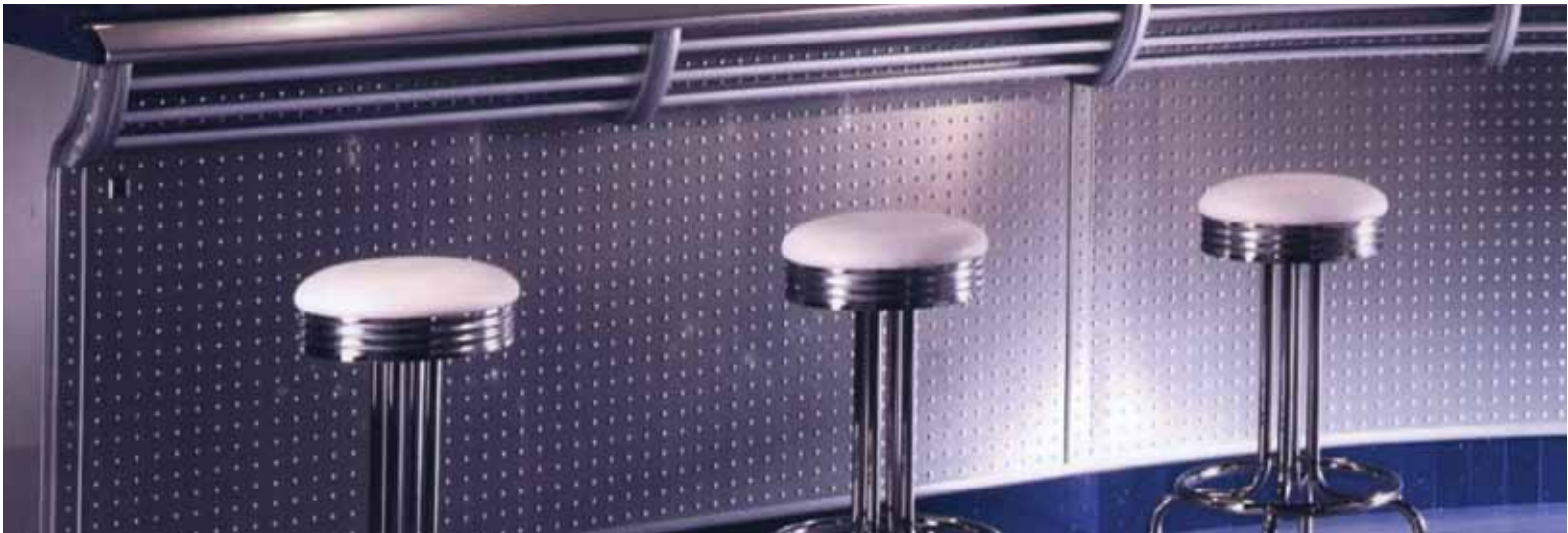
THE FORMULA

MIRROR SILVER



THE FORMULA

MINI DOME + BRUSHED ALUMINUM



THE FORMULA

DIAMOND PLATE + EXTERIOR CHROME



DOOR SKINS

STOCK DOOR SKIN FINISHES



LIGHT CHERRY



MEDIUM CHERRY



CLOVE CHERRY



LIGHT MAPLE



MEDIUM OAK



LIGHT WALNUT



MEDIUM WALNUT



DARK WALNUT



CHESTNUT APPLE



ESPRESSO APPLE



WENGE



MIRROFLEX™ DOOR SKINS are designed to apply over existing flat panel doors for a new, fresh look without the expense.

Skip the time-consuming installation of new doors and the price! With this environmentally friendly solution, you no longer have to send old doors to the landfill.

FEATURES

- STOCK COLLECTION**
- ADHESIVE BACKING**
- EASY ADHESION AND FABRICATION**
- HIGH IMPACT FINISH**
- CHEMICAL RESISTANT**
- CAN BE FIRE RATED** (IF INSTALLED WITH FIRE RATED ADHESIVE ON FIRE RATED DOOR)
- CUT TO FIT MOST COMMON DOOR SIZES**



THE FORMULA

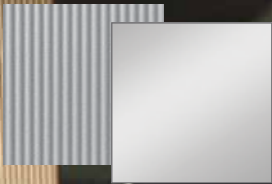
MEDIUM WALNUT



VILLAGE CINEMA CROWN CASINO

MELBOURNE, AUSTRALIA

AUSTRALIAN ARCHITECTURE FIRM RED DESIGN WORKED WITH BARESQUE TO DEVELOP A SLEEK AND SMART INSTALLATION USING MIRROFLEX STRUCTURES AT A THEATER DOWN UNDER.



THE FORMULA

RIB 1 + MIRROR

We contacted designer Stephen Tieppo of Red Design to find out how this project flourished from idea to design to development and installation.

ATI: HOW WAS THE DESIGN IDEA BORN?

Tieppo: Our aim was to maximize the impact of the refurbishment. Our options were limited because the client wanted to give the space a new identity without undertaking massive structural changes or change in volumes.

We decided to use a restricted color palette, but wanted to introduce the richness of gold along with all its connotations. We looked for a product that had depth and reflection.

ATI: HOW LONG DID THE ENTIRE PROJECT TAKE?

Tieppo: The project was completed in stages. The main foyer works were carried out whilst the cinema still functioned. It was a period of about 6 weeks, I think.

ATI: WHY DID YOU GO WITH MIRROFLEX STRUCTURES?

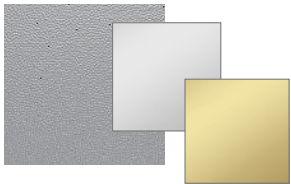
Tieppo: [MirroFlex] provided all the things we were after, as well as being a simple cladding material to use.

ATI: WHAT WERE SOME OF THE CHALLENGES WITH THIS PROJECT?

Tieppo: The main challenges were working with a product that we hadn't used before and the builder was unfamiliar with. However, we had great help from Alexis at Baresque.

ATI: HOW DID THE IDEA OF CREATING THE DIAMOND PATTERN COME ABOUT?

Tieppo: The diamond pattern was an extension of what we achieved with the main wall, where we introduced the diamond geometry to work with the existing air vents. Again, we had to rely on cladding over existing walls rather than introducing any other structural or physical changes. The wall was already angled — a product of the 90s I imagine — so we worked with those angles and the diamond pattern was born. It was a great result and very well executed by the joiners.



THE FORMULA

STRIKE + MIRROR & MIRROR GOLD



CUSTOM TOOLING

WITH **ATI'S NEW** MirroFlex Custom Tooling program, designs are limited only by your imagination.

Our Custom Tooling program creates branded solutions that allow customers to incorporate one-of-a-kind designs and logos into the material. This yields a functional, durable and affordable branded surface for walls and ceilings.

It's a tried and tested product that holds up even under the most strenuous use. Several finishes are available with TuffCoat, which makes the product three times more scratch resistant.

ATI has designed Custom Tooling solutions for companies across the nation, from national restaurants and fitness centers to regional boutiques and retail stores.

Work with an ATI sales associate to discuss your vision and have a custom tool created for your next project.

4 EASY STEPS TO BUILD YOUR CUSTOM TOOL:

- 1. Consultation + Tech Review
- 2. Design
- 3. Sampling
- 4. Production



THE FORMULA

AUDREY WITH CUSTOM LOGO



TWO-TONE EFFECTS

TWO-TONE IS A PROCESS where an additional color can be added to some of our designs. We brush the top of the design with another finish, usually chrome or gold, but patinas are possible as well.



ARGENT SILVER & CHROME



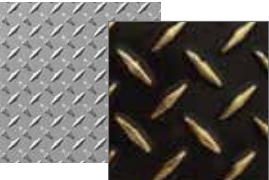
ARGENT SILVER & GOLD



BLACK & CHROME

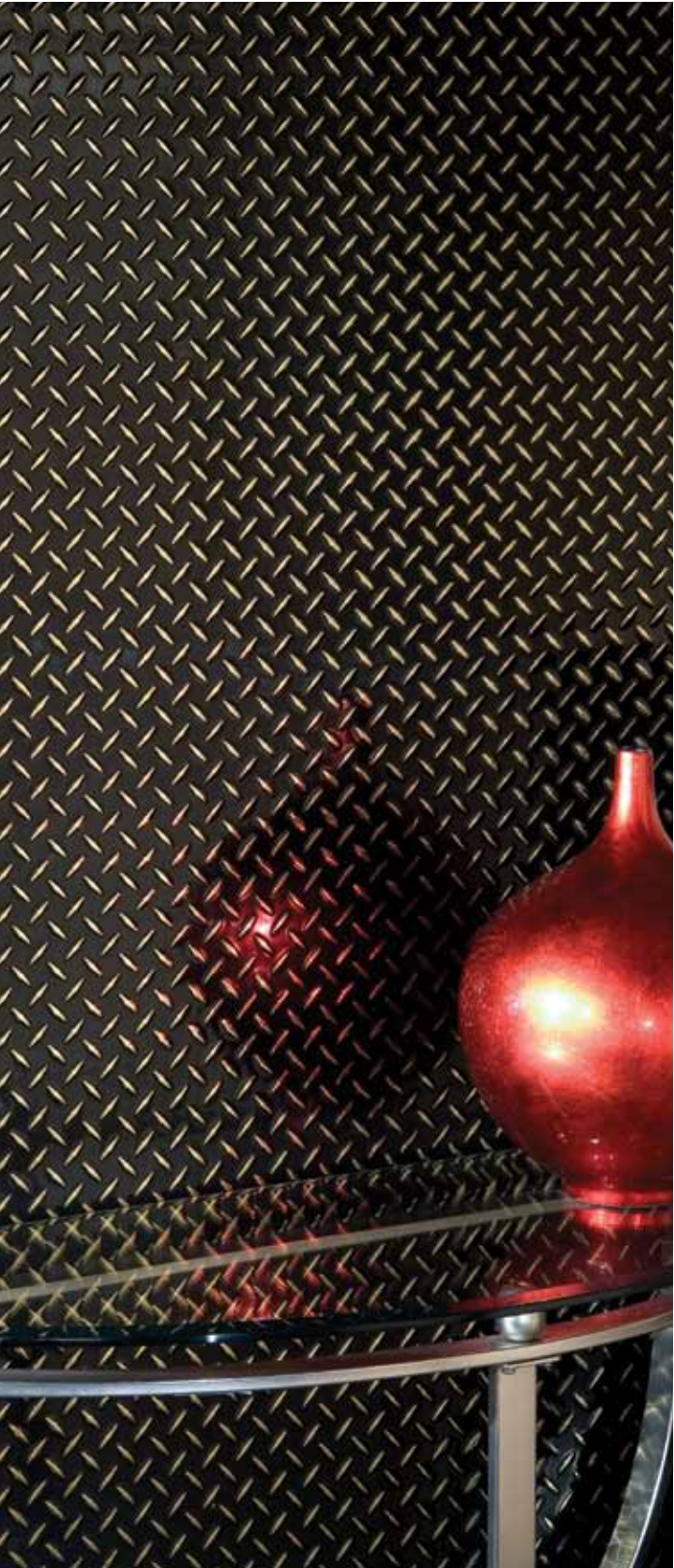


BLACK & GOLD



THE FORMULA

DIAMOND PLATE + BLACK & GOLD



FLAT SHEETS

ATI HAS ALWAYS PUSHED THE LIMITS of creativity with its innovative, deeply textured MirroFlex Structures line. However, we support and encourage both designers and fabricators to utilize our MirroFlex Flat Sheets for installations that may require special consideration.

MirroFlex Flat Sheets can be used to create some very dramatic design effects, including the ability to be die cut to almost any shape needed (furniture parts, moldings, tables, etc.), and the ability to be bent and used on a wide range of curved surfaces from soft, easy bends to column wraps of relatively small diameter. They can be flat-laminated or profile-wrapped to various substrates.

ATI also offers cut-to-size options for flat sheets and we can laminate foils to a variety of plastic types (PVC, ABS and HIPS) in various thicknesses and sizes, to be used in applications that include the following;

- EXHIBITS AND DISPLAYS
- DOOR AND DRAWER FASCIAS
- STORE FIXTURES
- CABINETS, COUNTERS & SHELVING
- MOLDING AND FRAMING
- CEILING AND WALL PANELS
- RV / AUTO / MARINE

Flat Sheets are available in all MirroFlex Structure Finishes available on page 60-61 , plus many more available via stock and custom order.

MirroFlex Edge Banding and profile wrapping comes in a diverse color range of polished aluminum, polished brass, gold, brushed aluminum, brushed brass, stainless steel, and black. Edge banding can be combined with pressure sensitive adhesive, as well as with primed backing, for high speed edging and profile wrapping.

Be sure to visit www.atilaminates.com/mirroflex and see our Engraving line of products, all laser engraveable.

FEATURES

-  **IMPACT RESISTANT**
-  **CHEMICAL RESISTANT**
-  **ABRASION RESISTANT**
-  **CUSTOM CAPABILITIES**
-  **TOLL COATING CAPABILITIES**
-  **PRESSURE SENSITIVE ADHESIVE MAY BE ADDED**
-  **CUT TO SIZE**
-  **EXTERIOR OPTIONS**



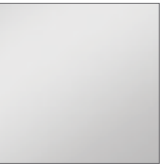
THE FORMULA

BERMUDA BRONZE



THE FORMULA

BRUSHED ALUMINUM



THE FORMULA

MIRROR

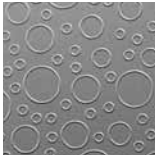


RENU & CASE STUDY

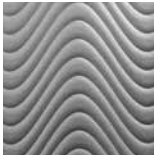
MIRROFLEX RENU

WHAT IS MIRROFLEX RENU? MirroFlex ReNu is our low-profile decorative thermoplastic, precisely cut to fit most standard (3" on center) slatwalls. It's supplied in 4-foot strips with a pressure-sensitive adhesive backing for DIY installation. Revamp existing slatwalls without closing the store or removing wall systems. Cover entire walls or just sections to substantially enhance the visual appeal of the room. Use ReNu to incorporate sustainability into your next project by covering, not throwing away, existing slatwalls.

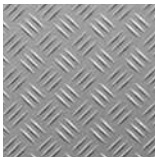
STOCK PATTERNS



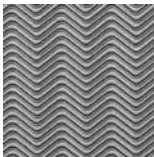
CIRCLES



CURVES



TRIPLE TREAD PLATE



WAVE

STOCK FINISHES



ARGENT COPPER



ARGENT BRONZE









ARGENT SILVER



ARGENT GOLD

FEATURES

-  **CONTEMPORARY EMBOSSED DESIGNS & FINISHES**
-  **SUPER FAST INSTALLATION-ONE PERSON CAN COVER A 4' X 8' SLATWALL SECTION IN ABOUT ½ HOUR**
-  **HIGH IMPACT & SCRATCH RESISTANT**
-  **COURIER SHIPPABLE**
-  **MADE WITH PRIDE IN THE USA**
-  **CUSTOM DESIGNS AND COLOR OPTIONS**

INSTALLATION



PEEL



ALIGN



PRESS

MILLER ELECTRIC MANUFACTURING

APPLETON, WISCONSIN



BEFORE



AFTER



ATI DECORATIVE LAMINATES' ability to create made-to-order products has helped customers across the globe reach a broader market with their businesses. ATI's Custom Tooling program is a great way for companies to incorporate a 3-dimensional brand presence within their design.

Miller Electric Manufacturing Company, owned by Illinois Tool Works and headquartered in Appleton, Wisconsin, is a manufacturer of arc welding and cutting equipment. In business for more than 80 years, Miller knows how to make their mark in the industry. They contacted ATI to create a custom MirroFlex product using their company name and logo to reinforce branding efforts at point of purchase.

Miller Electric Manufacturing's Merchandising Coordinator Kim Natrop worked with Georgetown Marketing & Sales, an ATI manufacturer's

representative in Cedar Springs, Michigan, to tackle the project. Natrop first spotted MirroFlex Structures while watching a design show on HGTV, and she was intrigued by the product's flexibility and versatility.

Georgetown helped Natrop select MirroFlex Renu with a MirroFlex Custom Tooling option that incorporated a 3-dimensional logo into the strips. Both the customer and the distributor were pleased with the results.

Roger York of Georgetown said, "The ReNu product worked better than total sheets."

Natrop's favorite part of the project was the transformation. "MirroFlex ReNu Strips takes old, worn-out displays and makes them look new again."



SKILL LEVEL:
INTERMEDIATE



TIME NEEDED:
2-3 HOURS



TOOLS REQUIRED:
SCISSORS / J ROLLER
NOTCHED TROWEL / CAULKING GUN

DIY CASE STUDY

TUB + SHOWER SURROUNDS

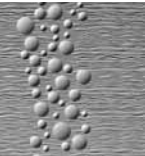


MIRROFLEX TUB AND SHOWER WALLS are ideal for wet areas. These robust wall surfaces are an attractive, economical alternative to traditional ceramic tiling.

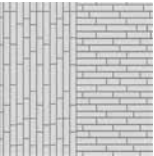
In fact, MirroFlex Tub and Shower Walls are a home renovator’s dream thanks to their durable, non-porous, grout-free properties and easy installation and maintenance. They are suitable for both residential and commercial environments with wet-area wall surfaces including shower recesses and laundry walls.

The standard kit includes two tub side panels with folding corners (adjustable size; fits most 30” to 40” tubs, one 60” wide tub back panel), and finishing trim for side panels (can be easily cut to size with scissors). Additional finishes and sizes may be available.

PATTERNS



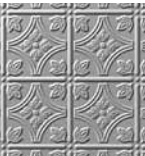
CASCADE



CROSSROADS



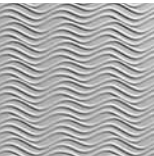
HERRINGBONE



SAVANNAH



SUBWAY TILE



WAVATION

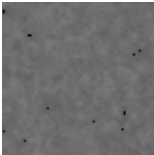
FINISHES



ANTIQUE
BRONZE



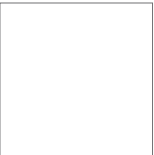
BERMUDA
BRONZE



GALVANIZED



TRAVERTINE



WHITE

DIY CASE STUDY

RESKIN YOUR SHOWER AND TUB

FIRST-TIME HOMEOWNER, Charlotte Reynolds of Thomasville, North Carolina, had a specific vision in mind when she purchased her first home, a two-story colonial style home with a few renovations required.

One of the first projects she tackled was her upstairs bathroom, mainly used by her two young children. Charlotte wanted this bathroom to be easy to clean; fun for the kids; and still a bit “grown-up” for guests.

Reynolds, however, was on a tight budget and needed to upgrade the bathroom without dipping deep into her wallet. She chose MirroFlex Tub & Shower Walls as an easy-to-install and easy-to-maintain option to update the space.

The entire project from demolition of the old tub unit, to the new tub, and finally to the plumbing and installation of MirroFlex Tub Walls, took no more than 4 days.

CASE STUDY OVERVIEW

ATI PRODUCT USED: CASCADE + GALVANIZED (MIRROFLEX TUB & SHOWER WALLS)

CONTRACTOR: RICK RAMIREZ, CARPENTER

INSTALLATION YEAR: 2013



WATCH THE ENTIRE DIY:
WWW.ATILAMINATES.COM/MF-TUB

MIRROFLEX ACCESSORIES

GRIDMAX™ IS A PATENTED, SNAP-ON GRID COVER designed to make grid systems invisible. It is cost effective and doesn't rust or scratch. GridMax is sized to fit over 15/16" T-bar suspension grid systems, with other sizes available by special order.

Mains, Tees and moldings are necessary to cover the entire grid system. They are packaged together, to complete 100 square feet of ceiling, and sold separately to use as needed.



15/16" (24 MM) GRIDMAX
IN PAINTABLE

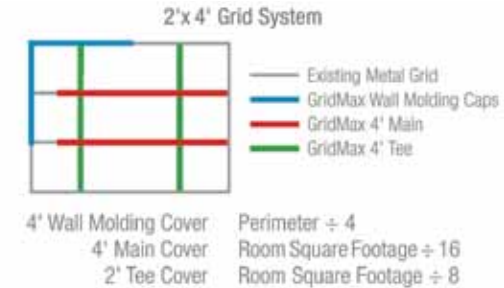
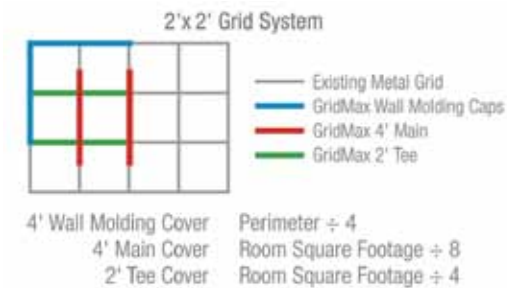


APPLYING GRIDMAX OVER T-BAR
SUSPENSION GRID SYSTEM



GRIDMAX
IN MOONSTONE COPPER

For the amount of GridMax needed, measure the perimeter and calculate the square footage.



MIRROFLEX TRIM IN MIRROR

MIRROFLEX TRIM IS AVAILABLE TO JOIN AND FINISH MirroFlex Structures. Edge J-Trim, Divider Trim, Inside Corners and Outside Corners are available in 4' lengths and can be easily cut to size.

The Edge J-Trim simply slides onto the cut edge of the panel. Most installations use decorative wood or metal moldings, but if these elements are not used, MirroFlex Trim will finish the edges nicely.



EDGE J-TRIM



INSIDE CORNER TRIM



DIVIDER TRIM



OUTSIDE CORNER TRIM



OUTLET COVERS IN CROSSHATCH SILVER

OUTLET AND SWITCH COVERS are peel-and-stick decorative laminates applied to existing outlet and switch wall plates. One package contains two sheets that are 6" x 12" (152 mm x 305 mm), and can be cut to fit most outlet or switch wall plates. See installation tips on package. Available in select finishes; samples on request.

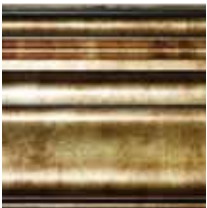
MANY DIFFERENT ADHESIVES and application techniques can be used to apply MirroFlex products. Please see ATI's technical information on our website or call Customer Service. Pressure Sensitive Adhesive in rolls is suitable for DIY and some commercial applications. MirroFlex double-faced roll is 1 1/2" x 40' (38 mm x 12.2 meters).

MIRROFLEX CROWN MOLDING

MirroFlex Crown Molding is a perfect transition from wall to ceiling and can be used with or without MirroFlex Structures Sheets. Crown Moldings are made from finger-jointed poplar and are 8' (2440mm) in length (UPS shippable).

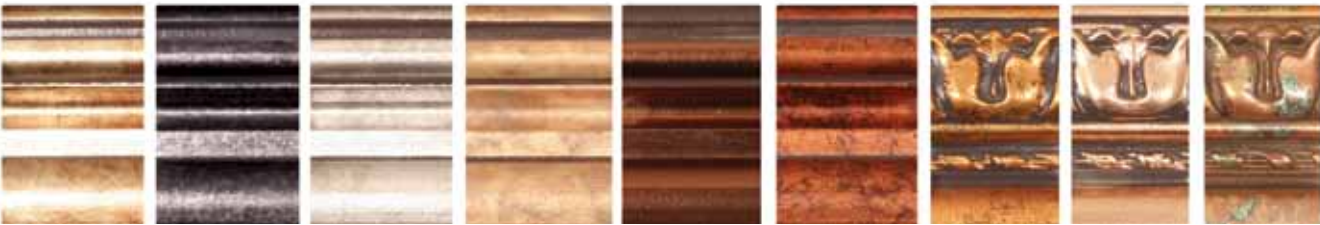


**BAROQUE CROWN
MOLDING IN
CROSSHATCH SILVER**
(6" x 15/16")
(152 mm x 24 mm)



**CLASSIC CROWN
MOLDING IN BERMUDA
BRONZE**
(6" x 13/16")
(152 mm x 21 mm)

FINISHES



BERMUDA
BRONZE SMOKED
PEWTER CROSSHATCH
SILVER CRACKED
COPPER OIL RUBBED
BRONZE MOONSTONE
COPPER MUTED
GOLD BRUSHED
COPPER COPPER
FANTASY

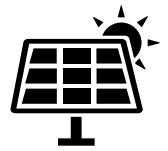
KNOWLEDGE



MADE
IN THE
USA



HANDS ON
MANUFACTURING
PROCESS



2015 SOLAR
MANUFACTURING
OFFSET INITIATIVE

ISO

9001:2008/14001
CERTIFIED

LEED

CREDITS
AVAILABLE

ECCOFLEX & SUSTAINABILITY

AT ATI DECORATIVE LAMINATES, WE UNDERSTAND
SUSTAINABILITY IS A JOURNEY OF ONGOING IMPROVEMENT AND
INNOVATION.

ISO 9001:2008 AND 14001 CERTIFIED
HUB (HISTORICALLY UNDERUTILIZED BUSINESS) CERTIFIED



AS AN ISO 9001:2008 CERTIFIED

COMPANY, we are committed to continual improvement through our life-cycle approach to manufacturing and quality product design. From our selection of raw materials and maximization of material yields through our manufacturing processes and end-of-life management strategies, ATI serves the demands of today's customer while preparing for tomorrow.

Manufacturing capabilities have constantly improved through the years and ATI's present location is on 6.5 acres centrally located in Greensboro, North Carolina, in a 70,000 square foot, state-of-the-art facility.

By 2015, we forecast approximately half of our energy consumption will be offset by renewable solar energy.

ECCOFLEX

EccoFlex is ATI's effort in sustainability, made of 40% post-consumer recycled material. It is beautiful in its natural form, but it can be painted as well. EccoFlex has all the same properties as MirrorFlex such as: ease of installation, high-quality appearance, ability to be bent and/or die cut and a wide color range to meet designers' specifications.

ATI'S QUALITY & ENVIRONMENTAL POLICY

ATI is committed to meeting customer expectations with on-time delivery, accurate order processing, and continuous improvements to our organization.

We are investigating alternate methods of minimizing our fall off through "waste-to-profit" networking where our manufacturing waste becomes material for another product.

Our commitments don't end at the door. We understand that our supply chain partners are part of our environmental footprint. We are working with our suppliers to reclaim their materials that go into our final product assembly – further minimizing the manufacturing waste that ends up in a landfill.

ATI is committed to maintaining a healthy work environment for our employees and to protecting our community in which we operate. Through continuous improvement we pledge to:

- Conduct our operations in compliance with all applicable environmental laws and regulations as well as other requirements.
- Review our established targets and objectives.
- Prevent pollution and minimize waste.



THE FORMULA

RANDOM LINES + ARGENT BRONZE

MIRROFLEX FINISHES

Argent Finishes have color throughout and a metallic luster. Call for our custom capabilities.
Request physical samples as printed images may not be accurate.



MIRROR
CBS 1000



MIRROR GOLD
CBS 2000



MIRROR RED
CBS 588



MIRROR BLUE
CBS 532



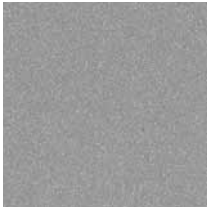
MIRROR GREEN
CBS 538



ARGENT COPPER 
N401



ARGENT BRONZE 
N530



ARGENT SILVER 
N439



ARGENT GOLD 
N496



MERLOT 
N596



LAVENDER 
N597



ALMOND 
N565



WINTER WHITE 
N566



LINEN BEIGE
N593



LINEN CHOCOLATE
N594



BRUSHED NICKEL
N560



BRUSHED ALUMINUM
CBS 5001



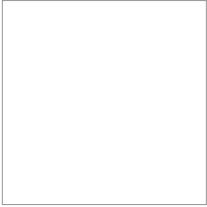
BRUSHED COPPER
CBS 514



BRUSHED STAINLESS
CBS 598



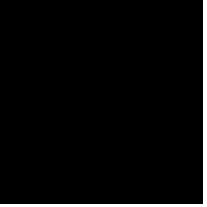
OIL RUBBED BRONZE
N522



GLOSS WHITE
Paintable



ECCOFLEX TAN 
Paintable



ECCOFLEX BLACK 



AFRICAN CHERRY
N590



AMERICAN WALNUT
N591



OREGON ASH
N592



WELSH CHERRY
N516



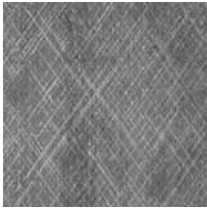
WASHED OAK
N535



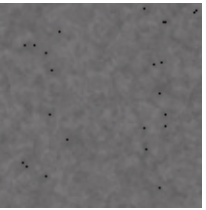
PEARWOOD
N505



LIGHT MAPLE
N528



CROSSHATCH SILVER
N419



GALVANIZED
N561



SMOKED PEWTER
N519



TRAVERTINE
N581



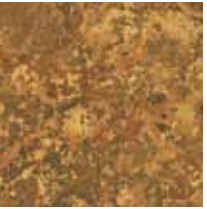
BERMUDA BRONZE
N417



ANTIQUE BRONZE
N562



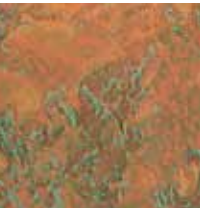
MUTED GOLD
N418



BRONZE FANTASY
N507




CRACKED COPPER
N415



COPPER FANTASY
N190



MOONSTONE COPPER
N414

 High Traffic Finishes have color throughout
so scratches are less visible

QUICK REFERENCE GUIDE

WALLS

4’X8’ DESIGNS

PATTERN	BIO	COMMENTS
ALPHABET SOUP	•	
AUDREY	•	
BAMBOO	•	
BOSTON	••	
CASCADE	•	
CAYMAN	•	
CELESTIAL	•	
CELTIC WEAVE	•	
CHARLESTON	••	
CHOCOLATE SQUARES	•	
CONNECT	•	
CURVATION	•	
CURVES		
DAMASK	•	
DIAMOND PLATE	•	
DOGWOOD	•	
DOME 1		
DOME 2		
DOME 3		
FLUTED		
GOBI	•	
GOBI VERTICAL	•	
HERRINGBONE TILE	•	
KELP	•	
MARQUIS		
METAL PLATES	•	
MINI DOME		
MINI QUADRO	•	
MOJAVE	•	
MOJAVE VERTICAL	•	
MOROCCO TILE	•	
NETTLE	•	
NEXUS	•	
OVALS		
PERF ROUND		
PERF SQUARE		
QUADRO	•	
QUILTED	•	
RANDOM LINES	•	1
RIB 1	•	
RIB 2	•	
SAHARA	•	
SAHARA VERTICAL	•	
SAVANNAH	••	
SHALLOT	•	
SOUTH BEACH	•	
SQUARE 5	•	
STRIKE	•	
SUBWAY TILE	•	
TETRUS	•	
WAVATION	•	
WAVATION VERTICAL	•	
WEAVE	•	
WEAVE VERTICAL	•	

18”X24” BACKSPLASH DESIGNS

PATTERN	BIO	COMMENTS
AMERICANA	•	
BRICK	•	
CALIFORNIA TILE	•	
CELESTIAL	•	
CHARLESTON	•	
CHESAPEAKE	•	
FLEUR	•	
GOBI	•	
HERRINGBONE TILE	•	
METRO	•	
MINI DOGWOOD	•	
MINI QUADRO	•	
MINI QUILTED	•	
MOJAVE	•	
MOROCCO TILE	•	
RIB 1	•	
SAN DIEGO	•	
SAVANNAH	•	
SQUARE 5	•	
STAR	•	
STRIKE	•	
SUBWAY TILE	•	
TIDAL	•	
WEAVE	•	

30-32”X48” WAINSCOT DESIGNS

PATTERN	BIO	HEIGHT
ANNAPOLIS	•	32”
CHATHAM	•	32”
GIANT WEAVE	•	30”
MINI QUADRO	•	30”
NEW ORLEANS	•	30”
WAVATION	•	32”

CEILINGS

2’X2’ GLUE UP DESIGNS

PATTERN	BIO	COMMENTS
AMERICANA	•	
BALTIMORE	•	
BOSTON	•	
CELESTIAL	•	
CELTIC WEAVE	•	
CHESAPEAKE	•	
COLONIAL	•	
CURVATION	•	
DOGWOOD	•	
GEORGIAN	•	
HURRICANE	•	
KELP	•	
MOJAVE	•	3
REVOLUTION	•	1
SAHARA	•	3
SAVANNAH	•	
SOUTH BEACH	•	
STAR	•	
STORM	•	
STRIKE	•	
TIDAL	•	
WAVATION	•	3

2’X4’ GLUE UP DESIGNS

PATTERN	BIO	COMMENTS
ART DECO	••	4
BALTIMORE	••	4
BOSTON	••	4
CHARLESTON	••	4
DIAMOND PLATE	••	4
DOGWOOD	•	4
FLEUR	••	4
MADISON	••	4
PORTRAIT	••	4
REGALIA	••	4
ROSETTE	••	4
SAN DIEGO	••	4
SAVANNAH	••	4
STRIKE	••	4

2’X2’ LAY IN DESIGNS

PATTERN	TEGULAR	COMMENTS
AMERICANA	•	
ART DECO		4
BALTIMORE		4
BOSTON		4
CELESTIAL	•	
CELTIC WEAVE	•	
CHARLESTON		4
CHESAPEAKE	•	
COLONIAL	•	
CORRUGATED	•	3
CURVATION	•	
CURVES		4
DIAMOND PLATE		4
DOGWOOD	•	
DOME 1		4
DOME 2		4
DOME 3		4
FLEUR		4
GEORGIAN	•	
HURRICANE	•	
INSET COFFER	•	
KELP	•	
MADISON	•	
MARQUIS		4
METAL PLATES	•	1,2
MINI DOME		4
MINI QUADRO		4
MOJAVE	•	3
QUADRO	•	
QUILTED		4
RAISED PANEL COFFER	•	
REVOLUTION	•	1
RIB 1	•	
ROSETTE	•	4
SAHARA	•	3
SAVANNAH		4
SOUTH BEACH	•	
SQUARE 5		4
STAR	•	
STORM	•	
STRIKE	•	
TIDAL	•	
WAVATION	•	3

- BEAD & BUTTON STYLE.
- 1

SPECIAL INSTRUCTIONS REQUIRED. CALL CUSTOMER SERVICE.
- 2

PANELS CREATE A UNIQUE PATTERN WHEN EACH PANEL IS ROTATED AND PLACED TOGETHER.
- 3

YOU CAN GET A "CHECKERBOARD EFFECT" BY ALTERNATING BETWEEN V (VERTICAL) AND H (HORIZONTAL) PANELS.
- 4

PATTERN ALSO AVAILABLE AS A 2'X2' AND/OR 2'X4' LAY IN WITH NO SURROUNDING FLATS. MINIMUMS/MULTIPLES APPLY TO THESE.
- QUICK SHIP PROGRAM.

A CUSTOM .013" PROGRAM IS AVAILABLE FOR LARGER, BUDGET-CONSCIOUS PROJECTS. PLEASE INQUIRE.

TECH, TERMS, FAQs & INSTALLATION

SINCE ATI PRODUCTS ARE USED FOR MANY DIFFERENT APPLICATIONS, MASTERFORMAT (CSI) NUMBERING WILL VARY. ATI CAN PROVIDE GUIDANCE, IF NEEDED. PLEASE CALL ATI CUSTOMER SERVICE FOR MORE INFORMATION.

CHECK WWW.ATILAMINATES.COM FOR UPDATED TECHNICAL INFORMATION AND INSTALLATION VIDEOS FOR MIRROFLEX PRODUCTS.

USEFUL TERMS

BIO (BUILT IN OVERLAP)

Overlap system that hides seams and makes installation easy, fast and forgiving.

ECCOFLEX

Made from 40% post-consumer recycled content material and can contribute to LEED credits. For details, see page 56.

GRIDMAX

A patented, snap-on grid cover designed to make grid systems invisible. See page 54.

TEGULAR

The embossed part of the design is lower than the suspension grid and the 4 edges are flat to fit nicely into the grid. Tegular tiles are designed to fit most 15/16" and 9/16" 2' x 2' grid systems, and can be found in our lay in ceiling tiles.

TILES, PANELS & SHEETS

GLUE UP

Available in both 2' x 2' and 2' x 4' tiles, they are designed with an overlap system (see BIO) to make installation easy, fast and forgiving. Glue Up tiles can be used on ceilings and walls.

LAY-IN CEILING TILES

Available in both 2' x 2' scant tiles and 2' x 4' tiles, they are designed to fit most suspension grid ceiling systems. The 2' x 2' size produces no sag. It is recommended that a standard mineral tile (old or new) be used on top of our lay-in tiles to hold them in place.

The 2' x 4' size might produce sag and require a small amount of panel adhesive.

DIY

Backsplash 18" x 24" Tiles - DIY tiles are primarily for consumer application as backsplashes, or wall and ceiling panels. The size is easy to handle and produces less waste in backsplash applications. Display racks are available for this size tile.

WAINSCOT

Wainscot panel sizes are 30"x48" or 32" x 48", depending on the design. Wainscot utilizes BIO for simple installation. Also suitable for full wall and ceiling installations.

Please call Customer Service for more information.

FREQUENTLY ASKED QUESTIONS

HOW MANY DESIGNS AND FINISHES ARE AVAILABLE FOR MIRROFLEX STRUCTURES?

There are currently 72 designs and 41 finishes. We add new items often, so check our website for the latest MirroFlex Structures updates.

CAN I CUSTOMIZE MIRROFLEX WITH MY OWN DESIGN OR A CUSTOM COLOR?

Yes. Due to the manufacturing processes, there is a minimum requirement for a custom design or color. We will be glad to discuss the requirements with you and see if this solution is feasible for your project.

DO THE SEAMS SHOW IN THE MIRROFLEX 4x8 SHEETS WHEN YOU PUT THEM SIDE BY SIDE?

MirroFlex sheets with the BIO (Built In Overlap) feature are designed to minimize the appearance of seams and makes installation easy and forgiving.

HOW DO YOU CUT MIRROFLEX?

MirroFlex can be easily cut using normal household scissors or a utility knife. Remember to measure and mark a straight line before you make your cut. If using a utility knife, score the sheet on the front/decorative side and then break the product as opposed to cutting all the way through.

WHAT IS "CUT TO SIZE"?

When ATI cuts the product to fit your size specifications. There is a charge for cut-to-size orders, and certain tolerances apply.

WHAT IS THE HEAT RESISTANCE OF MIRROFLEX? CAN I USE IT IN MY KITCHEN?

Never expose MirroFlex products to heat in excess of 140 degrees Fahrenheit. It can be used in kitchens, but refrain from installing it behind a drop-in cooktop, as it may deform when exposed to heat.

WHAT TYPES OF SUBSTRATES CAN MIRROFLEX BE APPLIED TO?

With the proper adhesive, virtually any substrate will work.

HOW DO YOU DETERMINE FIRE, IMPACT AND STAIN RESISTANCE?

ATI employs third-party testing facilities to independently verify MirroFlex's technical attributes.

TECHNICAL INFORMATION

FIRE RETARDANT

Test: ASTM E-84
Results: Class A

SOLVENT RESISTANCE

Results: 50 MEK

HUMIDITY

Results: 12 hrs 96-100% RH @40° C on MDF

MEK DOUBLE RUBS/CROCKMETER

Results: Withstands 70 cycles

IMPACT RESISTANCE

Test: ASTM D5420
Results: >2" lbs per mill of thickness

ABRASION RESISTANCE

Test: TABER
Results:
Patina w/ TuffCote - 4,700*
Argent Finishes - 5,000*
EccoFlex Finishes - 1,000*

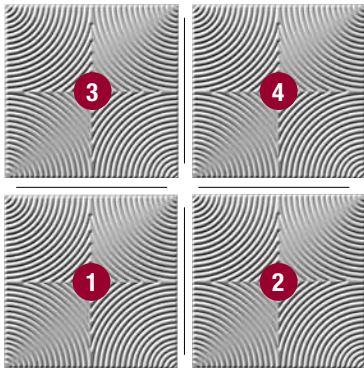
* Check our website for up-to-date testing data.

FABRICATION & INSTALLATION

BIO (BUILT IN OVERLAP)

Our BIO has flat edges on two adjoining sides of the ATI MirroFlex Wall panel. By orienting all sheets in the same direction and overlapping the panels, the seams are less noticeable. The placement of the sheet is also more flexible so that slight imperfections in the substrate will not affect the finished look.

When overlapping four ATI MirroFlex Wall panels, it is necessary to cut a ½" notch in panels 2 and 3 to avoid a bulge where the panels meet.



BEAD AND BUTTON

Certain MirroFlex patterns that do not have a BIO may have a Bead and Button feature. To install, overlap two or more sheets or tiles on the bead and button perimeter which will join at the pre-determined connection points.



ADHESIVES

Many different adhesives and application techniques can be used to apply MirroFlex products. Please see ATI's technical information on our website or call Customer Service. Pressure Sensitive Adhesive in rolls is suitable for DIY and some commercial applications. MirroFlex double-faced roll is 1 1/2" x 40'.



CLEANING & CARE

Clean only with warm, soapy water. Never use abrasive cleaners or anything with harsh chemicals. A high quality auto polish may be used to help protect the finish.

STORAGE

Store flat and acclimatize in the same environment for at least 24 hours before fabrication.

STAPLING

Our high impact ATI MirroFlex Wall sheets can be stapled into place with commercial staplers to either aid in an adhesive installation or as a standalone solution. The head of the staples can be easily covered with

color marking pens prior to use, making them almost invisible. This works especially well in ceiling installations. Testing is always recommended to ensure this method is suitable for the finished look and function required.

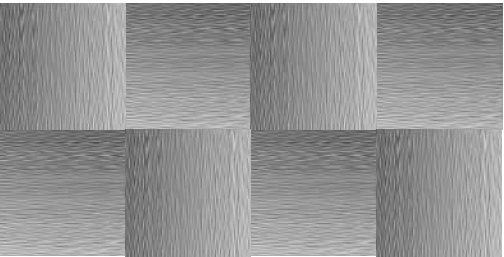
ONLINE SUPPORT:
ATILAMINATES.COM/SUPPORT

PHONE SUPPORT:
+1 800 849 1320

FABRICATION & INSTALLATION

PATTERN ORIENTATION

In the 2' x 2' Glue Up size of Mojave, Sahara and Wavation, you can get a "checkerboard effect" by alternating between V (vertical) and H (horizontal) panels. When specifying for this application, please add a "V" or an "H" to any of these designs. Shown to the right are 2' x 2' examples, which also show our BIO feature. Sahara and Wavation 4' x 8' sheets are also available in both the vertical and horizontal orientation.



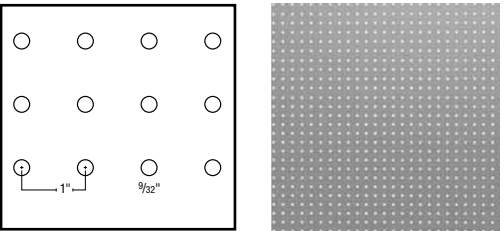
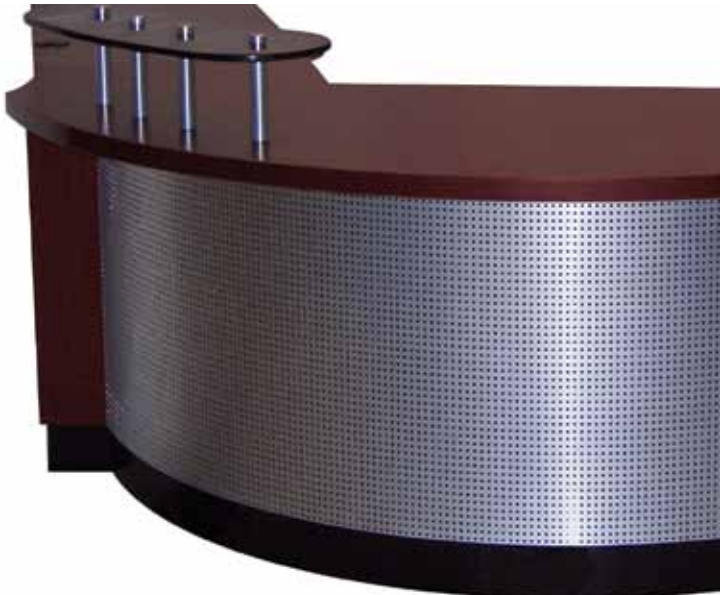
INSIDE AND OUTSIDE CORNERS

Inside and outside corners can be a challenge for installers. In addition to our trim strips (shown on page 54), installers have successfully used a commercial heat gun to gently heat the proper areas and bend ATI MirroFlex Wall for great looking edges.

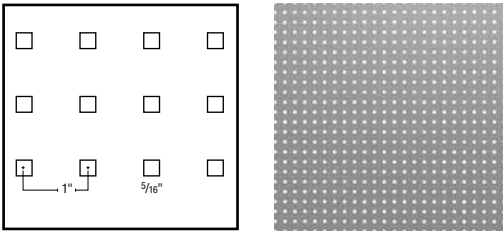


PERFORATED DESIGNS

Perforated Designs are available in four finishes: N6 Brushed Stainless (non-fire retardant) and three Argents — Silver, Copper & Gold (fire retardant). For a unique effect, paint the surface behind the perforated sheet in a contrasting color.



PERF ROUND
9/32" ● on 1" centers



PERF SQUARE
5/16" ■ on 1" centers

HOW TO ORDER

CLIENT SATISFACTION AND QUALITY FOR YOUR DOLLAR
ARE THE GOALS WE STRIVE TO ACHIEVE.

Laminate should be MirroFlex Structures (can also be MirroFlex or MirroFlex Perf) brand produced by ATI Decorative Laminates, Greensboro, North Carolina.

Pattern Name
Color Name and Number
Size

Type of Installation
(Wall, Wainscot, Backsplash, Glue Up Ceiling, Lay-In Ceiling, Fixtures, Columns or specify other)

Since ATI products are used for many different applications, MasterFormat (CSI) numbering will vary. ATI can provide guidance, if needed.

Please call ATI Customer Service at **800 849 1320** for more information.

ORDER PROCESSING
Most orders will be acknowledged within 24 hours. After customer receives acknowledgement, in-stock products should ship within 2 business days. Products in ATI's Quick Ship Program have a production lead time of 5 business days. All other products have a standard production lead time of 10 business days. Minimums and multiples may apply. ATI's minimum order amount is \$25 USD.

RETURN POLICY
Due to ATI's fast lead times and low minimum quantities, consider most made-to-order items as non-returnable. Samples available upon request.

All shipments are to be inspected within 10 working days of delivery. We are to be informed in writing of any potential adjustment necessary.

SAMPLES
Due to printer and digital screen limitations, patterns and finishes shown in this catalog may not accurately reflect MirroFlex. Request tangible samples to be verified and approved prior to specification and final application.

CONDITIONS AND WARRANTY
ATI Decorative Laminates warrants to the original consumer purchaser for one (1) year after date of purchase that, under normal use and service, MirroFlex products are free from manufacturing defects and conform to published specifications. MirroFlex products are intended for primarily interior applications.

ATI Decorative Laminates believes all information contained herein to be correct. It is the responsibility of the



fabricator/customer to completely test the adhesives and methods of fabrication to ensure that the results are satisfactory.

The seller's only obligation will be to replace product on a one-to-one basis. Neither the manufacturer nor the seller shall be liable for any additional damage or loss, directly or indirectly, arising as a result of using its products.

Slight imperfections and color variations can occur and are considered normal. Please inspect each product carefully before fabrication to ensure it meets your needs. ATI is not responsible for any fabrication or ancillary costs involved with using its products.

Visit us online at atilaminates.com/mirroflex for the latest additions to MirroFlex.

CONTACT ATI LAMINATES

 atilaminates.com/mirroflex
 **800.849.1320**



HIGH TRAFFIC 



THE FORMULA
NEXUS + WINTER WHITE



Design Beyond the Surface

WWW.ATILAMINATES.COM/MIRROFLEX

+1 800 849 1320

