

NUMETALTM

HIGH PRESSURE LAMINATES WITH
A REAL METAL SURFACE

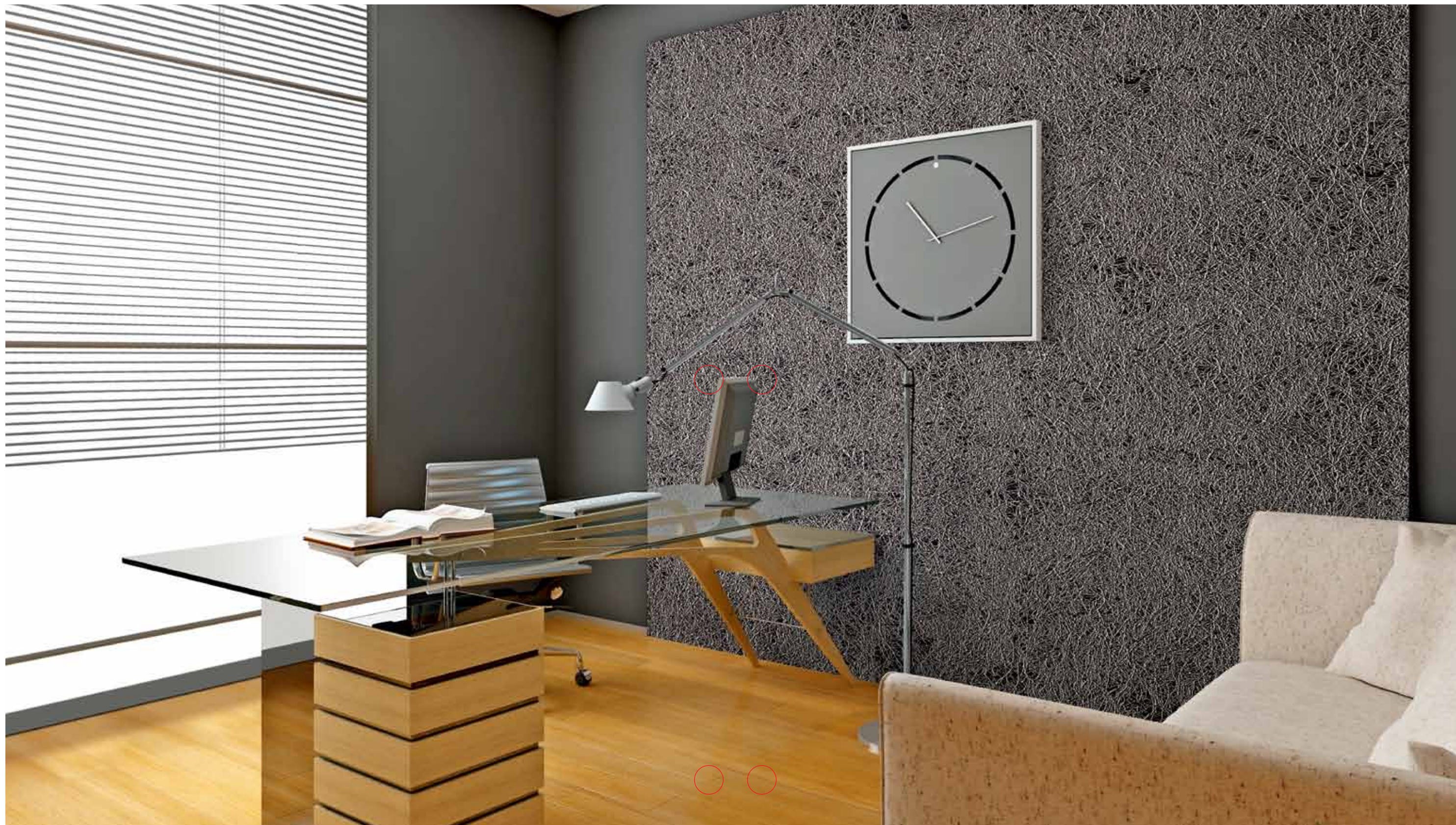
RETAIL
DISPLAY
INTERIOR DESIGN
HOSPITALITY

DISCOVER NUMETAL

ATI DISTRIBUTES NUMETAL TO THE HOSPITALITY,
RETAIL, DISPLAY, ARCHITECTURAL AND INTERIOR
DESIGN MARKETS.

DISCOVER MORE PRODUCTS FROM ATI AT
WWW.ATILAMINATES.COM

- 4 - WHAT IS NUMETAL?
- 6 - KOURY CORPORATION: A CASE STUDY
- 8 - OUR JOURNEY TOWARD SUSTAINABILITY
- 10 - NEW INTRODUCTIONS
- 12 - GREEN VALLEY GRILL: A CASE STUDY
- 14 - NUMETAL DESIGN COLLECTION
- 20 - AIRSTREAM: A CASE STUDY
- 22 - APPLICATIONS
- 26 - TECHNOLOGY, TERMINOLOGY & FAQs
- 28 - HOW TO SPECIFY AN ORDER
- 29 - QUICK REFERENCE GUIDE



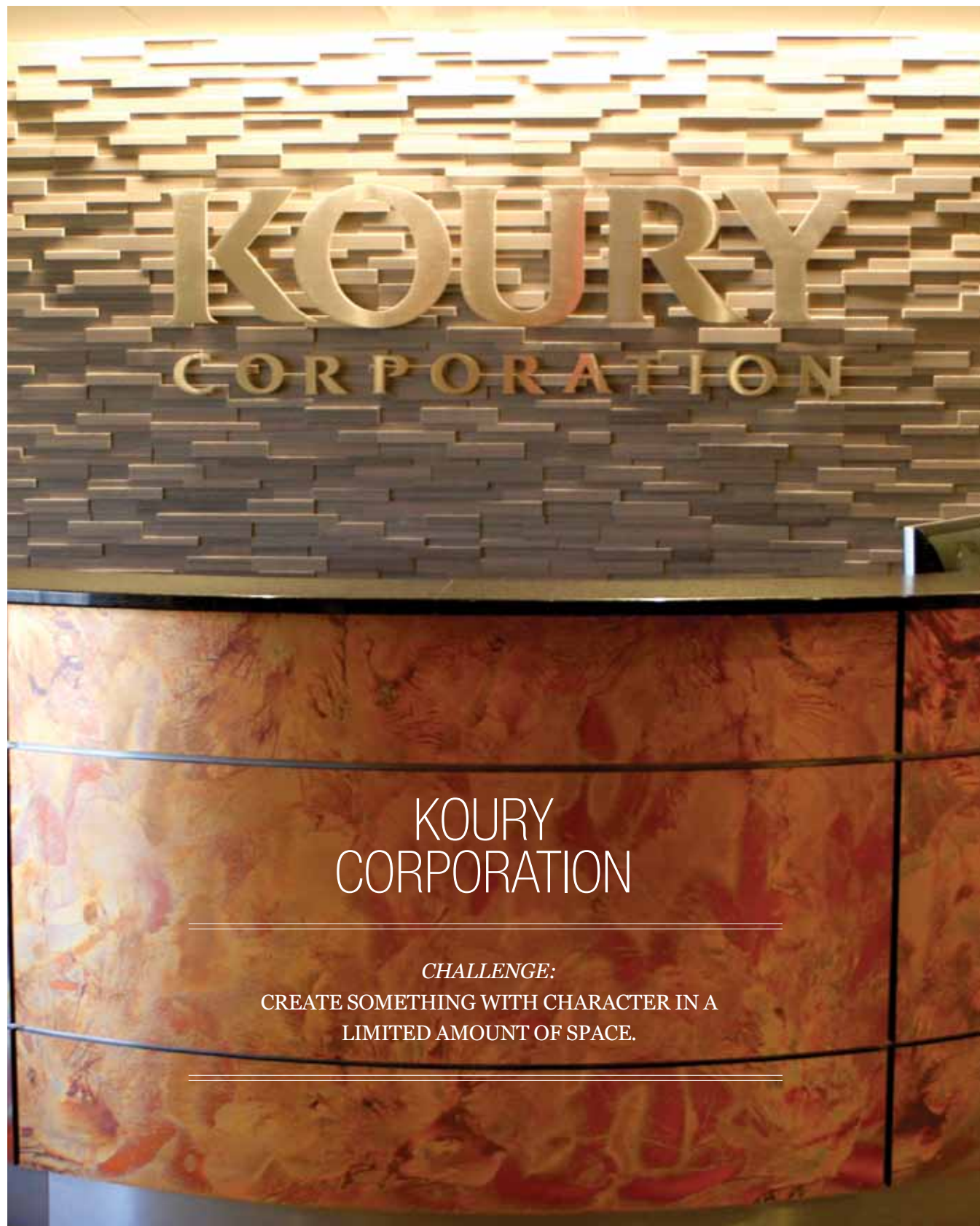
WHAT IS NUMETAL?

NUMETAL IS A COLLECTION OF HPLs (HIGH PRESSURE LAMINATES) WITH A REAL METAL SURFACE AND PHENOLIC PAPER BACKING.

NUMETAL SHEETS ARE USUALLY 4' X 8' SHEETS (4' X 10' AVAILABLE) IN ALUMINUM, COPPER OR REAL STAINLESS STEEL); FEATURING EMBOSSING, HAND PAINTING, ETCHING, AND OTHER INNOVATIVE TECHNIQUES TO ENHANCE THE LOOK OF METALS. MANY OF OUR NUMETAL LAMINATES ARE PRODUCED IN GERMANY BY DEKODUR. HIGH QUALITY DESIGN SOLUTIONS ARE ITS TRADEMARK. NUMETAL IS SUITABLE FOR VERTICAL AND LIGHT-DUTY HORIZONTAL APPLICATIONS.



DETAIL VIEW



KOURY CORPORATION

CHALLENGE:

CREATE SOMETHING WITH CHARACTER IN A
LIMITED AMOUNT OF SPACE.

BACKGROUND:

The Koury Corporation, one of the largest, privately owned, builder/developer companies located in Greensboro, NC, recently relocated their headquarters and decided to give their lobby a fresh new look. They turned to ATI Decorative Laminates' NuMetal product line for their product of choice.

The reason? Several actually. As Koury Corporation's interior designer Susan Boswell stated, "When Koury Corporation relocated their offices, they wanted to modernize their look." So, Boswell went with ATI's NuMetal line of hand-painted copper laminates. She selected NuMetal C412 Patina Onyx to beautifully wrap the lobby's reception desk.

CHALLENGE:

"Because Koury is a construction company, we wanted to use materials that showcased craftsmanship, but needed the product to be easy to install as well," said Boswell of her choice in material and design.

Boswell faced the challenge of limited space for this reception desk, so the curved desk is not only smartly designed, but it also looks great and adds character to the space. NuMetal can easily wrap around curved surfaces and columns, making it a perfect candidate for this installation. Boswell used NuMetal C412 Patina from the Unique Art collection to create a simple desk, but one that feels and looks like a work of art.

SOLUTION :

"It took about 2 to 3 weeks from the time we decided on the material, the POs, receiving it and later installing it," said Boswell.

The product has been installed for over 2 months now and Boswell boasted that they have had no issues with durability.

When asked if there was anything that ATI could have done better, Boswell couldn't think of a thing. She loves working with ATI's Southern Regional Sales Manger, Lee Averett. Boswell beamed at the question saying, "Lee was great to work with. He brought many samples for us to look at and choose from. We always get the best service!"

THE DETAILS:

DESIGNER-
SUSAN BOSWELL

SALES REP-
LEE AVERETT

96 SQ FT
13 DAYS





OUR JOURNEY TOWARD SUSTAINABILITY

AS A 35 YEAR OLD BRAND, WE UNDERSTAND SUSTAINABILITY IS A JOURNEY OF ONGOING IMPROVEMENT AND INNOVATION.

AS AN ISO 14001 CERTIFIED COMPANY, we are committed to continual improvement through our life-cycle approach to manufacturing and quality product design. From our selection of raw materials and maximization of material yields through our manufacturing processes and end-of-life management strategies, ATI serves the demands of today's customer while preparing for tomorrow.

We are investigating alternate methods of minimizing our off-fall through "waste-to-profit" networking where our manufacturing waste becomes material for another product.

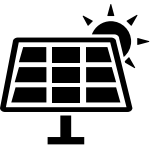
Our commitments don't end at the door. We understand that our supply chain partners are part of our environmental footprint. We are working with our suppliers to reclaim their materials that go into our final product assembly – further minimizing the manufacturing waste that ends up in a landfill.

Most NuMetal laminates are available for special order, in 100% rapidly renewable, pre-consumer materials that are phenol-free and have formaldehyde emissions of less than 0.01 PPM – one of the lowest in the industry. The core is made of 100% biological secondary components obtained from renewable resources and is fully recyclable.

Through a third party, Development and Test Laboratory for Wood Technology (EPH) in the Institute for Wood Technology in Germany, this product was analyzed and certified according to (EN DIN 717/1) exceeding the emission thresholds of CARB's Airborne Toxic Control Measure (ATCM) Phase 1 and 2 for HWPW, PB and MD.



35 YEAR ANNIVERSARY



2015 SOLAR MANUFACTURING OFFSET INITIATIVE

ISO

9001:2008/14001 CERTIFIED

LEED

CREDITS AVAILABLE

NEW INTRODUCTIONS



NEW
INTRODUCTIONS

NUMETAL IS A MODERN HYBRID OF TECHNOLOGY
AND SOPHISTICATION, PROVING THAT FORM CAN
MEET FUNCTION.

THE FORMULA *ANTIQUPEWTER SHINGLES - 490 SHI*



WASHINGTON - CA27
COLLECTION: UNIQUE ART



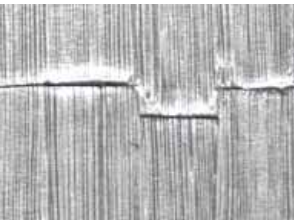
CAPE COD - CA29
COLLECTION: UNIQUE ART



OZ - CA34
COLLECTION: UNIQUE ART

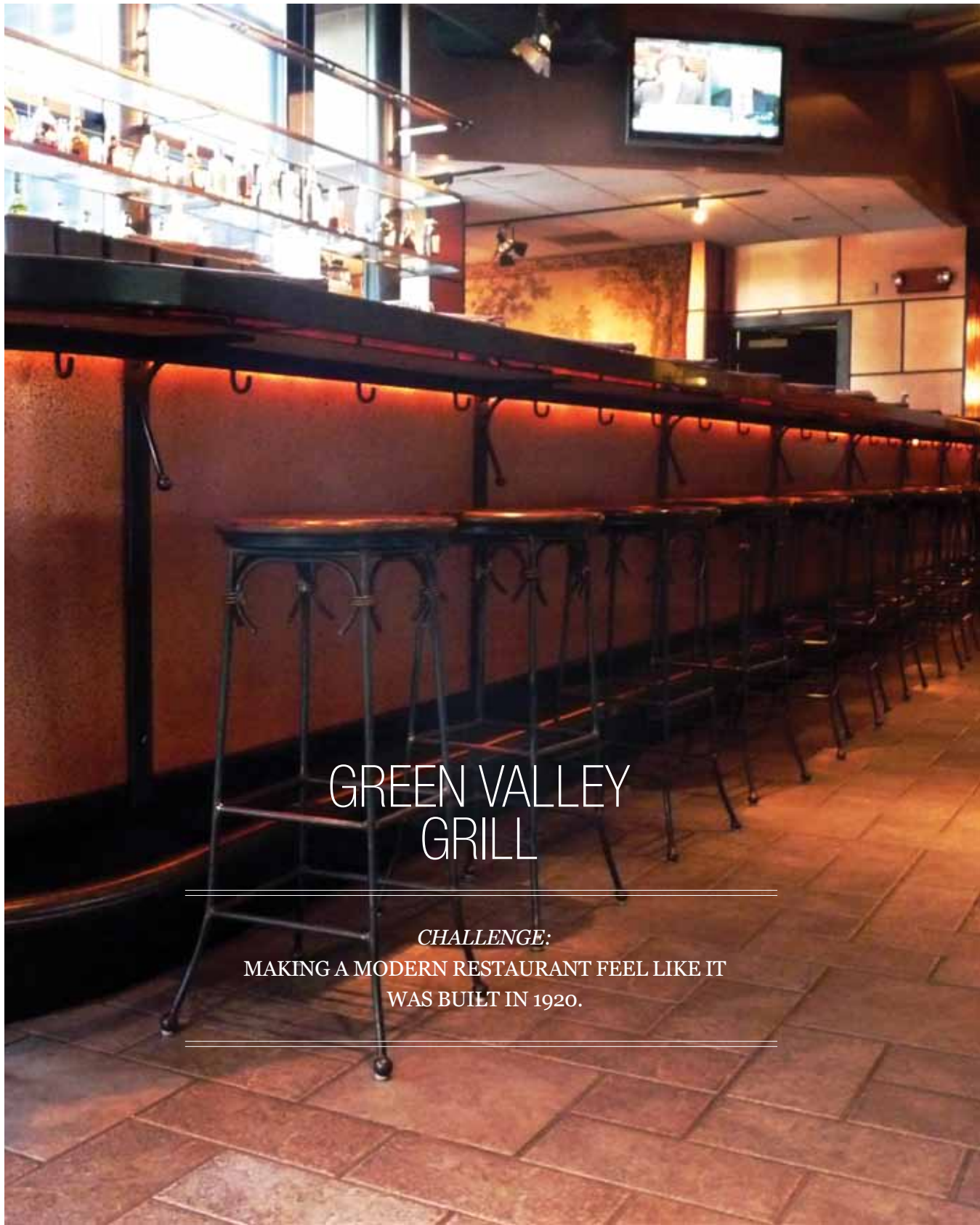


*ANTIQUPEWTER
SHINGLES - 490 SHI /*
COLLECTION: ALUMINUM



*BRUSHED STAINLESS
SHINGLES - 256 SHI /*
COLLECTION: ALUMINUM





GREEN VALLEY GRILL

CHALLENGE:
MAKING A MODERN RESTAURANT FEEL LIKE IT WAS BUILT IN 1920.

THE FORMULA *ANTIQUÉ FINE HAMMERED COPPER - C462*

THE DETAILS:

DESIGNERS-
DON RIVES AND
DENNIS QUAINANCE

PRODUCTS-
NUMETAL C462
ANTIQUÉ FINE
HAMMERED COPPER
AND C431 ANTIQUÉ
COPPER ORE

INSTALLATION YEAR:
1998



THE FORMULA *ANTIQUÉ COPPER ORE - C431*

BACKGROUND:

In the heart of Greensboro, North Carolina, lies a pearl of a hotel known as the O. Henry, and its equally charming restaurant, the Green Valley Grill. Unless you're a local, you would never guess that this charming and luxuriously accommodating hotel and restaurant is only 16 years old. One would think that both structures have been standing in this location for more than 100 years. But according to CEO Dennis Quaintance, that is not the case.

In 1998 Quaintance was directly involved in the design of Green Valley Grill along with his late colleague, Don Rives. They wanted the restaurant design to echo warmth and welcome. "We wanted to leave the impression that you are not dining in something new, but rather something ancient," said Quaintance about the initial design concepts. "There is something, a psychological effect, kind of like going home. It's a safe space; it's a comfort place." They went with brick and copper as their staple materials because they felt that, "brick and copper are things that people have lived next to for quite a while."

CHALLENGE:

Originally, Quaintance and Rives wanted the hotel to look like it was built in 1870 and the restaurant to feel like a 1920s addition. What many folks don't know is that both structures were actually constructed in 1998. When this design duo decided on copper, Quaintance contacted his friends at ATI Decorative Laminates, because he was sure if anyone knew laminates and copper, it would be Jim Burgio, ATI's CEO.

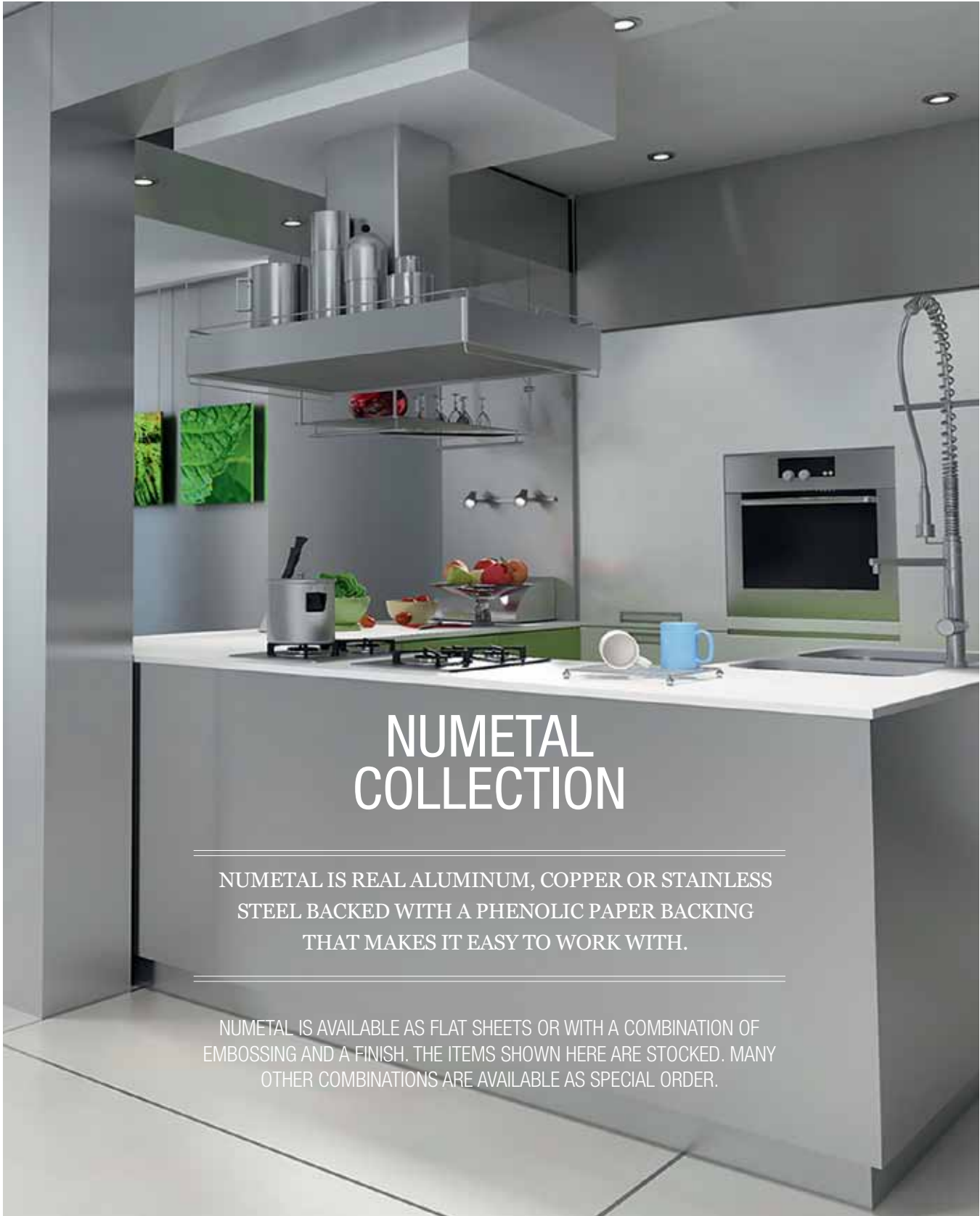
"We went with laminate because it's so durable. It's been 16 years since installation and it's held up great," said Quaintance. "And I'll bet you dollars-to-donuts if you came back in 16 years you'll see these exact same walls. Because materials either wear out or ugly out, and this isn't going to do either one."

SOLUTION :

Both copper and brick have endured for ages, and those materials helped the design team achieve a historic mood. They applied ATI's C431 Antique Copper Ore in a portion of the restaurant informally referred to as "the Copper Room," and wrapped their large bar with C462 Antique Fine Hammered Copper. Both materials are from the NuMetal Copper Collection, which gives the space old-world charm with the durability of modern materials.

Originally, the Copper Room's installation did not have metal joiners, but a couple of years after the restaurant's opening there were humidity problems with the restaurant's HVAC system, which made Quaintance and his team slightly alter the design to address the effects of moisture. "We came in and put in these, what we call joint lines. But that was all retrofit, we didn't have to change anything to do it," said Quaintance. Because of the copper laminate's durability, they had the same laminates that wrap the bar (C462 Antique Fine Hammered Copper) installed throughout the restaurant's large kitchen area.

NUMETAL COLLECTION



NUMETAL
COLLECTION

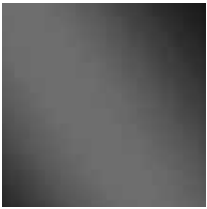
NUMETAL IS REAL ALUMINUM, COPPER OR STAINLESS
STEEL BACKED WITH A PHENOLIC PAPER BACKING
THAT MAKES IT EASY TO WORK WITH.

NUMETAL IS AVAILABLE AS FLAT SHEETS OR WITH A COMBINATION OF
EMBOSSING AND A FINISH. THE ITEMS SHOWN HERE ARE STOCKED. MANY
OTHER COMBINATIONS ARE AVAILABLE AS SPECIAL ORDER.

COLLECTION: ALUMINUM



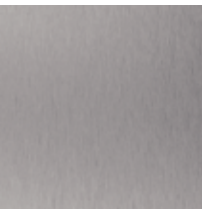
*POLISHED
ALUMINUM*
904
COLLECTION: ALUMINUM



*POLISHED
SMOKE*
1014
COLLECTION: ALUMINUM



*POLISHED
BRASS*
914
COLLECTION: ALUMINUM



*BRUSHED
STAINLESS*
256
COLLECTION: ALUMINUM



*BRUSHED
BRONZE*
944
COLLECTION: ALUMINUM



BRUSHED BRASS
934
COLLECTION: ALUMINUM



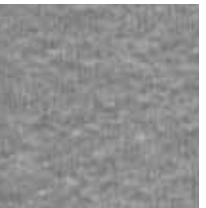
BRUSHED BLUE
258
COLLECTION: ALUMINUM



ALUMINUM MILL
204
COLLECTION: ALUMINUM



*BRUSHED
ALUMINUM*
924
COLLECTION: ALUMINUM



*BRUSHED
ALUMINUM
FINE HAMMERED*
924 HAM
COLLECTION: ALUMINUM



*BRUSHED
ALUMINUM POINT*
924 PNT
COLLECTION: ALUMINUM



*BRUSHED
ALUMINUM
CORRUGATED*
603/924
COLLECTION: ALUMINUM



*BRUSHED
STAINLESS STEEL
CORRUGATED*
603/256
COLLECTION: ALUMINUM



*MILL ALUMINUM
CORRUGATED*
603/209
COLLECTION: ALUMINUM

NUMETAL COLLECTION



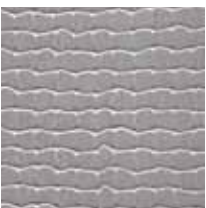
*BRUSHED
ALUMINUM
DIAMOND PLATE*
924 GEK
COLLECTION: ALUMINUM



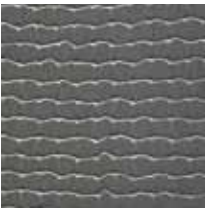
*BRUSHED
STAINLESS
DIAMOND PLATE*
256 GEK
COLLECTION: ALUMINUM



ALUMINUM RONDO
202 RON
COLLECTION: ALUMINUM



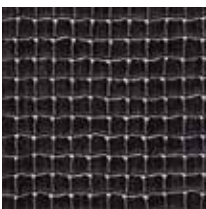
*BRUSHED
ALUMINUM MESH*
924 NTZ
COLLECTION: ALUMINUM



*BRUSHED
STAINLESS
MESH*
256 NTZ
COLLECTION: ALUMINUM



BLACK MESH
11 NTZ
COLLECTION: ALUMINUM



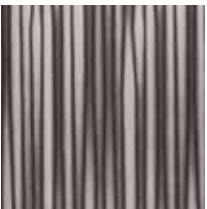
*ANTIQUE PEWTER
MESH*
490 NTZ
COLLECTION: ALUMINUM



*BRUSHED
ALUMINUM REEDS*
924 PTK
COLLECTION: ALUMINUM



*BRUSHED
STAINLESS
REEDS*
256 PTK
COLLECTION: ALUMINUM



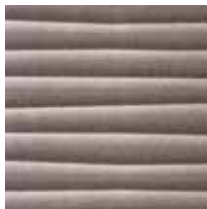
*ANTIQUE PEWTER
REEDS*
490 PTK
COLLECTION: ALUMINUM



*BRUSHED
STAINLESS
METALGRAIN*
256 SEL
COLLECTION: ALUMINUM



*ANTIQUE PEWTER
METALGRAIN*
490 SEL
COLLECTION: ALUMINUM



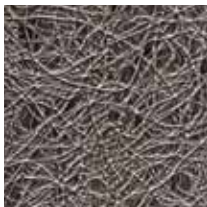
*BRUSHED
ALUMINUM
RIDGES*
924 PGQ
COLLECTION: ALUMINUM



*BRUSHED
STAINLESS
RIDGES*
256 PGQ
COLLECTION: ALUMINUM



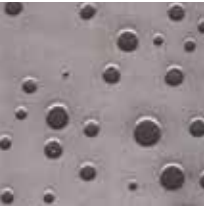
*BRUSHED
STAINLESS
ROOTS*
256 WRZ
COLLECTION: ALUMINUM



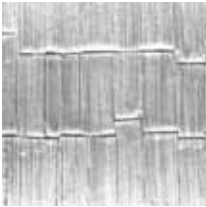
*ANTIQUE PEWTER
ROOTS*
490 WRZ
COLLECTION: ALUMINUM



*BRUSHED
STAINLESS
CRATER*
256 DRT
COLLECTION: ALUMINUM



*ANTIQUE PEWTER
CRATER*
490 DRT
COLLECTION: ALUMINUM



*BRUSHED
STAINLESS
SHINGLES*
256 SHI
COLLECTION: ALUMINUM



*ANTIQUE PEWTER
SHINGLES*
490 SHI
COLLECTION: ALUMINUM

COLLECTION: COPPER



THE FORMULA *ANTIQUE COPPER ORE - C431*



*COPPER
FINE HAMMERED*
C471
COLLECTION: COPPER



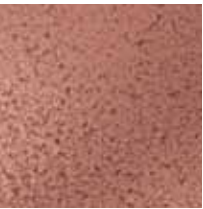
*COPPER
HAMMERED*
C473
COLLECTION: COPPER



*MATTE
COPPER*
C400
COLLECTION: COPPER



*ANTIQUE COPPER
FILIGRAN*
C457
COLLECTION: COPPER



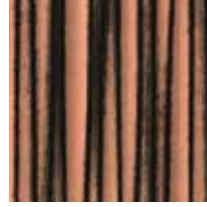
*ANTIQUE COPPER
FINE HAMMERED*
C462
COLLECTION: COPPER



*ANTIQUE COPPER
MESH*
401 NTZ
COLLECTION: COPPER



*ANTIQUE COPPER
ORE*
C431
COLLECTION: COPPER



*ANTIQUE COPPER
REEDS*
402 PTK
COLLECTION: COPPER

NUMETAL COLLECTION

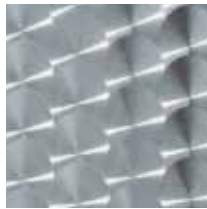
COLLECTION: REAL STAINLESS STEEL



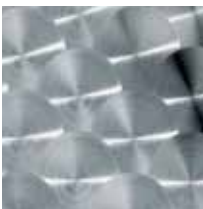
BRUSHED STEEL
299 MIC
COLLECTION:
REAL STAINLESS STEEL



DIAMOND PLATE
299 GEK
COLLECTION:
REAL STAINLESS STEEL



RADIAL
299 ROS
COLLECTION:
REAL STAINLESS STEEL



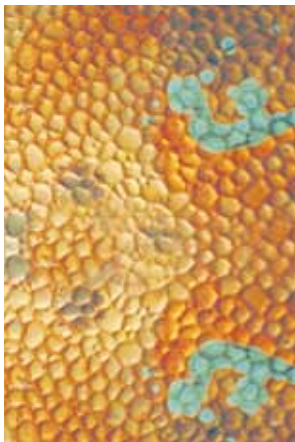
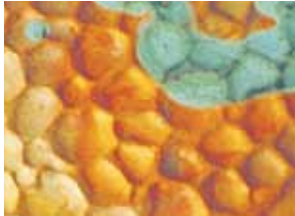
RONDO
299 RON
COLLECTION:
REAL STAINLESS STEEL

REAL STAINLESS
STEEL ITEMS MAY BE
EASILY FABRICATED
WITH STANDARD
WOODWORKING TOOLS.

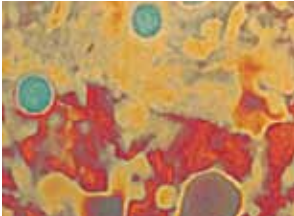
COLLECTION: UNIQUE ART



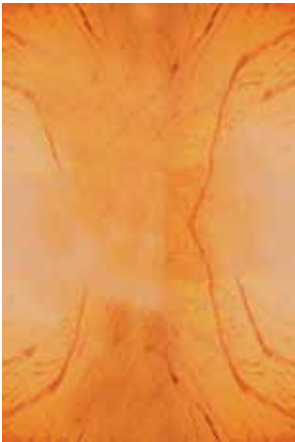
**PATINA AUTUMN
LEAVES** - C421
COLLECTION: UNIQUE ART



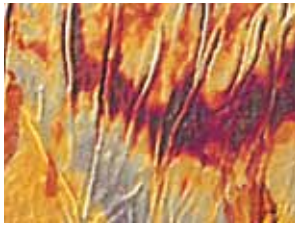
**PATINA
ESMERALDA** - C426
COLLECTION: UNIQUE ART



**PATINA
MALCHIT** - C414
COLLECTION: UNIQUE ART



PATINA ONYX
C412
COLLECTION: UNIQUE ART



BERLIN
CA1
COLLECTION: UNIQUE ART



CAIRO
CA2
COLLECTION: UNIQUE ART



MADRID
CA5
COLLECTION: UNIQUE ART



WASHINGTON
CA27
COLLECTION: UNIQUE ART



CAPE COD
CA29
COLLECTION: UNIQUE ART



OZ
CA34
COLLECTION: UNIQUE ART

AS THEIR NAME IMPLIES Unique Art Laminates, are truly unique work-of-art laminates that offer rich colors and metals in their design. They are hand painted by artists using techniques that allow for repeatability. The artistic value and nuances of hand painting are evident when using multiple sheets. Protected with a high quality lacquer process to ensure durability, these laminates can be used in both low- and high-traffic areas. Since each sheet is hand painted, it should be noted that slight differences will be seen from sheet to sheet.

CASE STUDY

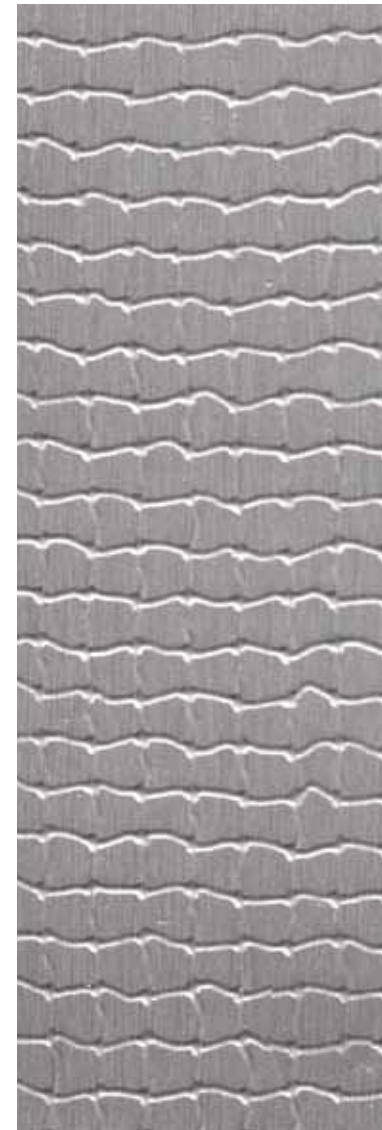


AIRSTREAM

THE CHALLENGE:
 PROVIDE A LOW MAINTENANCE SURFACE THAT FITS
 WITH THE STYLE OF AN ICONIC AMERICAN BRAND.

THE FORMULA

BRUSHED ALUMINUM MESH - 924 NTZ



BRUSHED ALUMINUM MESH
 924 NTZ

DETAILS:

64

square feet in every "Classic 2015" Trailer

3,200

square feet of material per month

81,888

square feet specified to date

BACKGROUND:

In 1929, Wally Byam set out to build a sleek, light-weight travel trailer with all the commodities of home. Some 85 years later, his iconic Airstream trailer remains a symbol of American adventure and discovery.

ATI has worked with Airstream and its team of designers on several occasions, with the company most recently specifying 204 Mil Aluminum sheets in its 2014 Sterling trailer.

CHALLENGE:

The year 2015 marked a significant remodel of Airstream's flagship product, the Classic trailer, where they once again called on ATI for interior surface solutions because, as one designer put it, "We know they do some pretty cool things."

SOLUTION:

In keeping with Airstream's commitment to light-weight design, they selected the 924 NTZ Brushed Aluminum Mesh as the galley kitchen's backsplash and divider wall. Aluminum laminate is a perfect match because of its flexibility and ease of use. Airstream previously used 204 Mil Aluminum as the finishing laminate for the kitchen divider walls.

ATI's level of service, brand equity and product integrity, as well as their reliability, are just some of the reasons Airstream continues to call upon the family-owned laminate manufacturer, based in Greensboro, NC.

Just like the Classic, NuMetal is designed for long-term adventures.





APPLICATIONS

THE MAJORITY OF ATI'S PRODUCTS ARE CREATED FOR COMMERCIAL SPACES WHERE DURABILITY OF DESIGN REIGNS SUPREME. WE'RE EXPERTS IN SURFACES THAT REMAIN ABRASION RESISTANT FOR YEARS. IN ADDITION TO PERFORMANCE, OUR PRODUCTS MEET SAFETY AND MATERIAL STANDARDS.

RETAIL
DISPLAY
INTERIOR DESIGN
HOSPITALITY

THE FORMULA *UNIQUE ART OZ - CA 34*



THE FORMULA *BRUSHED ALUMINUM RIDGES
924 PGQ*



THE FORMULA *REAL STAINLESS STEEL - 299 MIC*



DETAIL VIEW

THE FORMULA *BRUSHED STAINLESS CRATER - 256 DRT*



THE FORMULA *UNIQUE ART CAPE COD - CA29*



THE FORMULA *ALUMINUM RONDO - 202 RON*



THE FORMULA *UNIQUE ART PATINA MALCHIT - C414*
* LIGHT DUTY HORIZONTAL SURFACE



THE FORMULA *BRUSHED STAINLESS DIAMOND PLATE*
924 GEK

TECH, TERMINOLGY, & FAQS

REAL STAINLESS STEEL

Our Stainless Steel collection is made of real stainless steel and retains all the properties of the original metal. It is constructed with an ultra-thin layer of stainless steel with standard HPL backing and allows regular woodworking tools to be used in fabrication. We have several styles to choose from in-stock.

ALUMINUM COLLECTION

All finishes are available in flat sheets or with embossed designs added. Most finishes are lacquered for chemical and scratch resistance. The polished finishes are anodized.

COPPER COLLECTION

Copper laminates, with selected popular embossed designs, are available from stock. Each 4’ x 8’ sheet is lacquered and comes with clear protective film for ease in processing.

UNIQUE ART SERIES

The Unique Art series is breaking new ground with stylish interior designs. These unique, work-of-art laminates feature rich colors and metals.

Natural finishing processes make it possible for international artists to decorate these copper panels with a fine layer of delicate ornamental touches and dynamic shapes. They are hand painted by artists using techniques that allow for repeatability; however, it should be noted that slight differences will be seen from sheet to sheet.

THE RESULT: the fulfilment of individual ideas, with each motif in the series a unique work in itself.

FEATURES

- Real metal surfaces
- Non-fading
- Abrasion resistance
- Eco-friendly options available: fully recyclable and CO2 neutral
- Huge variety of metal, nature and handmade artistic customizations

APPLICATIONS

- Claddings for walls or ceilings, doors or frames
- Kitchen cabinet inserts and backsplashes
- Point-of-sale displays
- Accent walls
- Furniture
- Store fixtures
- The WOW factor for exhibitions and shows

WHAT IS NUMETAL? NuMetal is a collection of High Pressure Laminates with a thin metal surface and phenolic paper backing. These HPLs can be used for interior applications like wallcoverings, wall panels and ceilings.

WHAT IS PHENOLIC PAPER BACKING?

Phenolic paper backing is layers of impregnated Kraft paper bonded together.

IS PHENOLIC PAPER BACKED METAL BETTER THAN UNBACKED METAL? In many ways phenolic paper backed metal is superior to unbacked items. The phenolic paper backing helps protect the laminate from being dented and damaged in shipping and fabricating (it does not make the product totally resistant to damage so the fabricator still needs to take care). Phenolic paper backed metal is also easier on router bits and saw blades so the fabricator should get more life out of these tools using the phenolic paper backed laminate.

WHAT IS THE DIFFERENCE BETWEEN NUMETAL AND OTHER SIMILAR, COMPETITIVE METAL LINES? The main difference is the choice and variety of items that the NuMetal line offers. Other competitors specialize in standard melamine HPLs whereas we focus solely on the metal market. The phenolic paper backed HPLs are all made the same way and fabricated with the same standard tools. There is more of a difference when compared to some of the unbacked metals. A lot of these items do not have a phenolic paper backing. This makes the items a little more difficult to fabricate and a little harder on fabricators’ tools.

HOW CAN NUMETAL BE USED IN MY PROJECT? NuMetal is recommended for all vertical and light-duty horizontal use. Claddings for walls or ceilings, doors or frames, furniture, light-duty horizontal surfaces and displays are just a few examples of areas for NuMetal installation.

FREQUENTLY ASKED QUESTIONS

HOW ABOUT SIZE AND THICKNESS?

Thickness is approximately .035” with the exception of Unique Art and stainless steel, which are .050” thick. Polished aluminum surfaces are anodized. Brushed aluminum and copper surfaces are lacquered. NuMetal sheets are typically 4’ x 8’, with 4’ x 10’ sheets available in select designs. See page 29 for additional details.

HOW IS NUMETAL FABRICATED? NuMetal is fabricated with the same tools used on any high pressure decorative laminate, and bonded to the same type of substrates commonly used in the trade. Special care must be taken to avoid denting the surface with tools or scratching the surface with particles of metal. Carbide-tipped blades and bits are recommended. Dull blades will generate heat and scorch metal.

HOW CAN NUMETAL BE SHIPPED? NuMetal can be shipped via truck in flat cardboard or wooden crates or rolled for courier shipment, depending on the pattern and size of the order. It is recommended that soon after receipt the NuMetal should be removed from the container and stored flat so excessive roll set does not take place.

IS THERE ANY SPECIAL TREATMENT REQUIRED BEFORE OR AFTER FABRICATION TO ENSURE LONGEVITY OF THE PRODUCT?

Anodization produces a hard surface that will not tarnish and has the high abrasion resistance of aluminum. All products are covered with a clear, peel-off mask to protect the finish. This mask should be left on during fabrication to avoid marring the surface.

IS THE LACQUER COMPATIBLE WITH OTHER SYSTEMS? All brushed NuMetal, Copper, and Unique Art laminates are coated with cellulose-based lacquer. This lacquer is compatible with other lacquer systems, which allows for additional finishing if necessary.

WHAT TYPE OF ADHESIVE IS

RECOMMENDED? Any contact cement or cold-set adhesive normally used with decorative laminates is suitable. Avoid adhesive spreading or setup on metallic surface. USE ONLY NAPHTHA OR BENZINE IN ADHESIVE CLEANUP - - do not use lacquer solvents or other adhesive solvents, which attack lacquer coatings.

HOW SHOULD NUMETAL BE STORED? It is important to store the product flat and not on edge, as storing on edge can cause the sheet to bow after some time. Metal laminates should be stored face up in a cool, dry area and in a completely supported flat position. Use a top sheet of chipboard or similar material to hold stored sheets flat.

HOW SHOULD NUMETAL BE CLEANED? Make sure that the cleaning agent used is compatible with either our anodized or lacquered products prior to use. Clean surfaces with a soft cloth using household cleaner - waxes, Windex-type solutions, or ordinary soap and water. Good furniture or automobile waxes provide additional protection for all metal laminate surfaces.

ARE THERE ANY PRECAUTIONS TO CONSIDER WHEN HANDLING THE PRODUCT?

Metal laminates will conduct electricity and can cause shocks or short circuits when in contact with ungrounded electrical circuits. This product is laminated aluminum, copper, or stainless steel of the highest quality and brilliance. Slight surface imperfections are normal. PLEASE INSPECT CAREFULLY PRIOR TO USE to insure the material is suitable for your needs.

IS COUNTER BALANCING NECESSARY? Counter balancing is necessary as with other High Pressure Laminates to prevent warping of the substrate like wallcoverings, wall panels, ceilings and surfaces.

ORDERING + QUICK REFERENCE GUIDE

HOW TO SPECIFY
& ORDER

CLIENT SATISFACTION AND QUALITY FOR YOUR
DOLLAR ARE THE GOALS WE STRIVE TO ACHIEVE.

WHEN ORDERING
PLEASE SPECIFY

1. Pattern Name/Number
(indicate eco friendly, green design if applicable)
2. Color Name/Number
3. Size & Thickness
4. Type of Installation
(i.e.: wall, column, fixtures or specify other)

TECHNICAL
SPECIFICATIONS

Please see the Technical Specs on our web-
site at atilaminates.com/resource-center.

RETURN POLICY

All shipments are to be inspected within
10 working days after delivery. ATI is to be
informed in writing of any potential adjust-
ment necessary. If returned undamaged,
return of first-quality stocked items subject
to a 20% restock fee.

SAMPLES

Due to printer and digital screen limitations,
patterns and finishes shown in this catalog
may not accurately reflect NuMetal.
Request tangible samples to be verified and
approved prior to specification and final
application. Samples available upon request.

CONDITIONS & WARRANTY

ATI Decorative Laminates warrants to the
original consumer purchaser for one (1)
year after date of purchase that, under

normal use and service, NuMetal products
are free from manufacturing defects and
conform to published specifications.
NuMetal products are intended for primarily
interior applications.

ATI Decorative Laminates believes all
information contained herein to be correct.
It is the responsibility of the fabricator/
customer to completely test the adhesives
and methods of fabrication to ensure that
the results are satisfactory.

The seller's only obligation will be to replace
product on a one-to-one basis. Neither the
manufacturer nor the seller shall be liable
for any additional damage or loss, directly
or indirectly, arising as a result of using its
products.

Slight imperfections and color variations
can occur and are considered normal.
Please inspect each product carefully before
fabrication to ensure it meets your needs.

Visit us online at [atilaminates.com/
numetal](http://atilaminates.com/numetal) for the latest additions to
NuMetal.

ATI is not responsible for any fabrication
or ancillary costs involved with using its
products.

OTHER ATI PRODUCTS

NuMetal is just one of several products from
ATI. Please call or visit our website to see
the following:

MIRROFLEX: Deeply textured decorative
laminates.

FUSION: The fusing of color or an image
into a substrate.

CUSTOMER SERVICE
800 849-1320

Visit us online at www.atilaminates.com
for the latest designs and finishes.

PRODUCT QUICK REFERENCE

COLLECTION	PRODUCT NAME & FINISH	ITEM NUMBER	ROLLABLE FOR SHIPMENT	4' X 10' AVAILABLE
ALUMINUM	ALUMINUM MILL	204	•	
	ALUMINUM RONDO	202 RON	•	
	ANTIQUE PEWTER CRATER	490 DRT	•	
	ANTIQUE PEWTER MESH	490 NTZ	•	
	ANTIQUE PEWTER METALGRAIN	490 SEL	•	
	ANTIQUE PEWTER REEDS	490 PTK	•	•
	ANTIQUE PEWTER ROOTS	490 WRZ	•	
	BLACK MESH	11 NTZ	•	
	BRUSHED ALUMINUM	924	•	•
	BRUSHED ALUMINUM CORRUGATED	603/924	•	
	BRUSHED ALUMINUM DIAMOND PLATE	924 GEK	•	
	BRUSHED ALUMINUM FINE HAMMERED	924 HAM	•	
	BRUSHED ALUMINUM MESH	924 NTZ	•	
	BRUSHED ALUMINUM POINT	924 PNT	•	
	BRUSHED ALUMINUM REEDS	924 PTK	•	•
	BRUSHED ALUMINUM RIDGES	924 PGQ	•	
	BRUSHED BLUE	258	•	•
	BRUSHED BRASS	934	•	•
	BRUSHED BRONZE	944	•	•
	BRUSHED STAINLESS	256	•	•
	BRUSHED STAINLESS CRATER	256 DRT	•	
	BRUSHED STAINLESS DIAMOND PLATE	256 GEK	•	
	BRUSHED STAINLESS MESH	256 NTZ	•	
	BRUSHED STAINLESS METALGRAIN	256 SEL	•	
	BRUSHED STAINLESS REEDS	256 PTK	•	•
	BRUSHED STAINLESS RIDGES	256 PGQ	•	
	BRUSHED STAINLESS ROOTS	256 WRZ	•	
	BRUSHED STAINLESS STEEL CORRUGATED	603/256	•	
	POLISHED ALUMINUM	904	•	•
	POLISHED BRASS	914	•	•
	POLISHED SMOKE	1014	•	•
	MILL ALUMINUM CORRUGATED	603/209	•	
COPPER	COPPER FINE HAMMERED	C471	•	
	COPPER HAMMERED	C473	•	
	MATTE COPPER	C400	•	
	ANTIQUE COPPER FILIGRAN	C457	•	
	ANTIQUE COPPER FINE HAMMERED	C462	•	
	ANTIQUE COPPER MESH	401 NTZ	•	
	ANTIQUE COPPER ORE	C431	•	
	ANTIQUE COPPER REEDS	402 PTK	•	•
UNIQUE ART	PATINA AUTUMN LEAVES	C421		
	PATINA ESMERALDA	C426	•	
	PATINA MALCHIT	C414	•	
	PATINA ONYX	C412	•	
	UNIQUE ART BERLIN	CA1	•	
	UNIQUE ART CAIRO	CA2	•	
	UNIQUE ART MADRID	CA5	•	
	UNIQUE ART WASHINGTON	CA27	•	
	UNIQUE ART CAPE COD	CA29	•	
	UNIQUE ART OZ	CA34		
	REAL STAINLESS STEEL BRUSHED STEEL	299 MIC	•	
REAL STAINLESS	REAL STAINLESS STEEL DIAMOND PLATE	299 GEK	•	
	REAL STAINLESS STEEL RADIAL	299 ROS	•	
	REAL STAINLESS STEEL RONDO	299 RON	•	

DISCLAIMER. We believe all the information correct. However, we are not fabricators and are merely passing on information received from fabricators who have worked successfully with NuMetal. It is totally the responsibility of the fabricator to completely test the adhesives and methods of fabrication to insure the results are satisfactory for the fabricator's requirements. We are not responsible for any fabrication costs involved with using NuMetal. See our warranty.



Design Beyond the Surface

WWW.ATILAMINATES.COM/NUMETAL

+1 800 849 1320